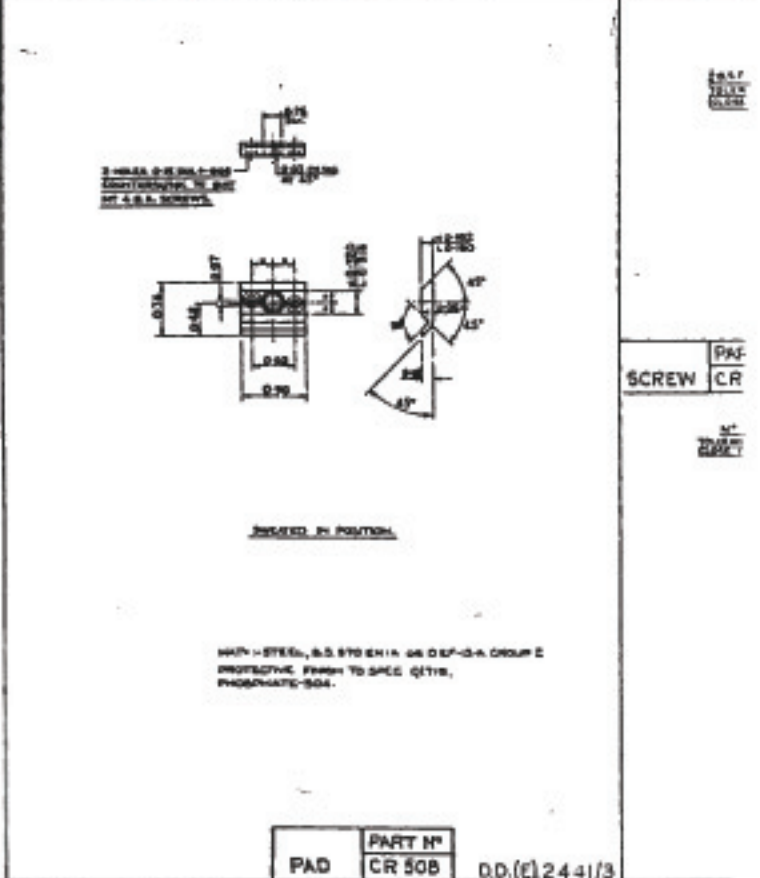
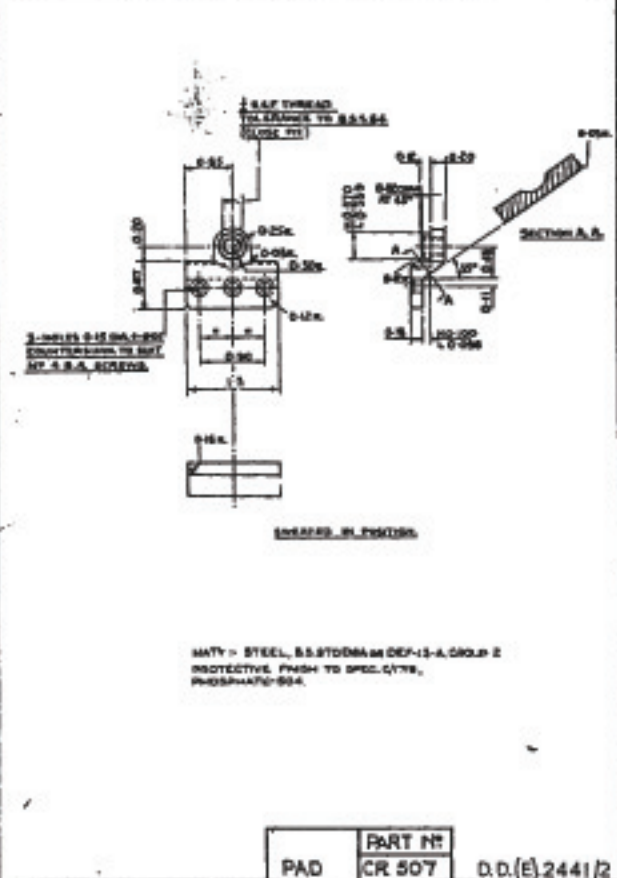
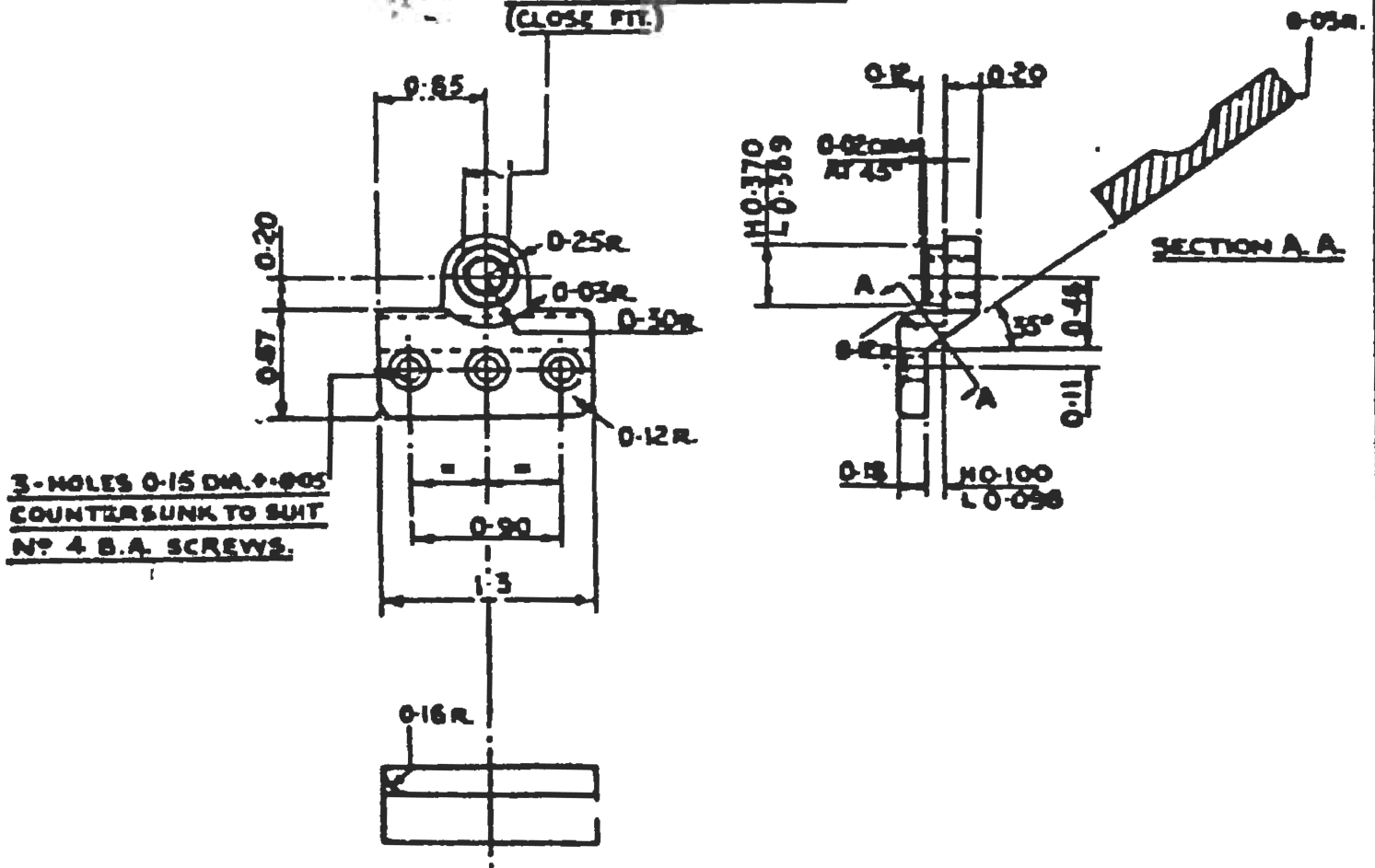


TOLERANCES: 1-1/2 ANGLES MUST BE EXACT ALIGNMENT OF 2-5 ANGLES 1-1/2 IN 4 AT END



BRACKET, TELESCOPE, No 4 (T) R FOR NO 10 TELESCOPES

1/2 B.S.F. THREAD  
TOLERANCE TO B.S.S. 24  
(CLOSE FIT.)



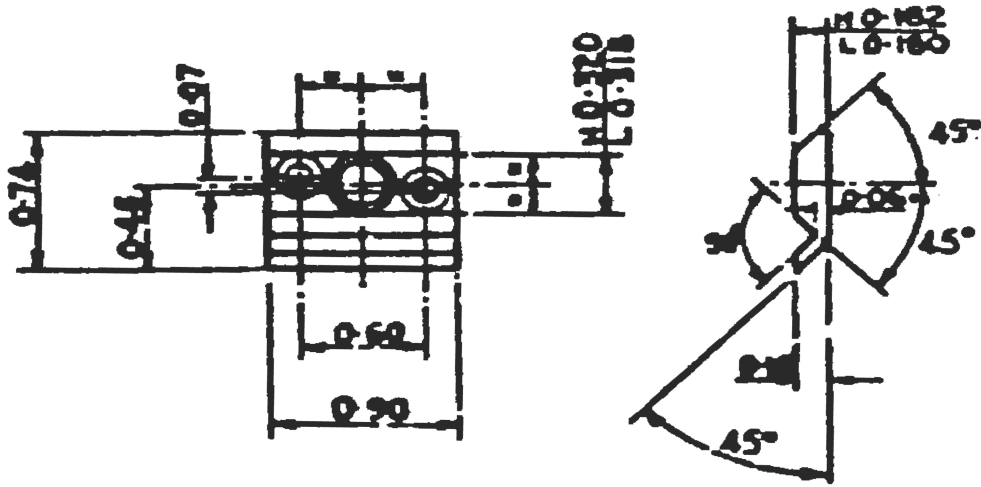
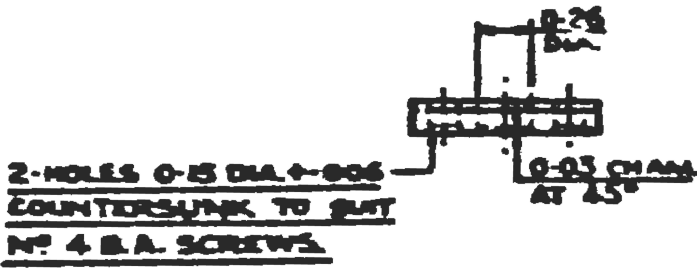
3-HOLES 0.15 DIA. ± 0.005  
COUNTERSUNK TO SUIT  
Nº 4 B.A. SCREWS.

SWEATED IN POSITION.

MAT: - STEEL, B.S. 970 EN8 or DEF-13-A GROUP 2  
 PROTECTIVE FINISH TO SPEC. C/179,  
 PHOSPHATE-804.

PAD	PART Nº
	CR 507

D.D.(E).2441/2



SWEATED IN POSITION.

MATERIAL - STEEL, B.S. 970 EN1A OR DEF-13-A. GROUP 2  
PROTECTIVE FINISH TO SPEC C/719,  
PHOSPHATE-504.

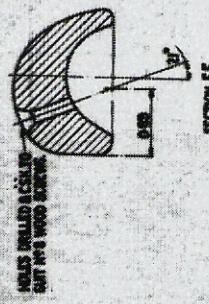
PAD	PART NO
	CR 508

D.D.(E) 2441/3

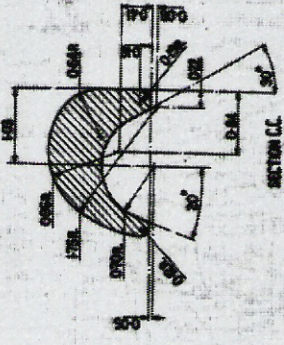
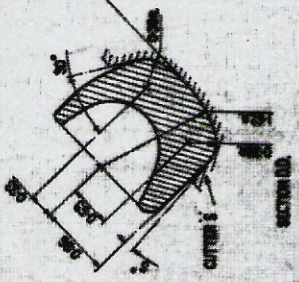
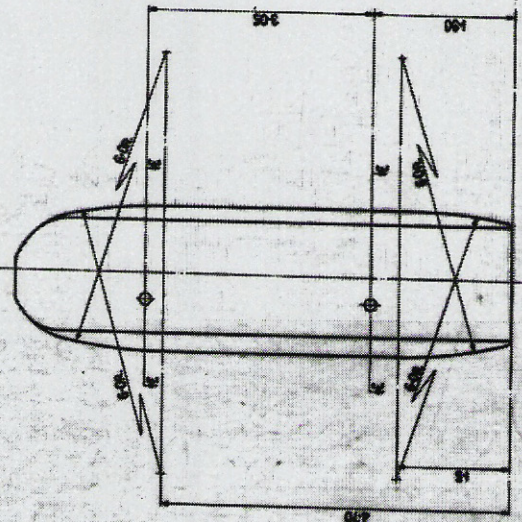
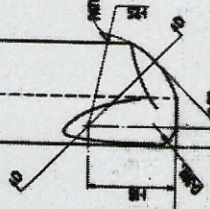
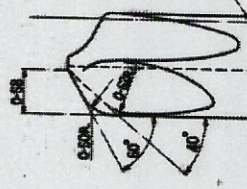
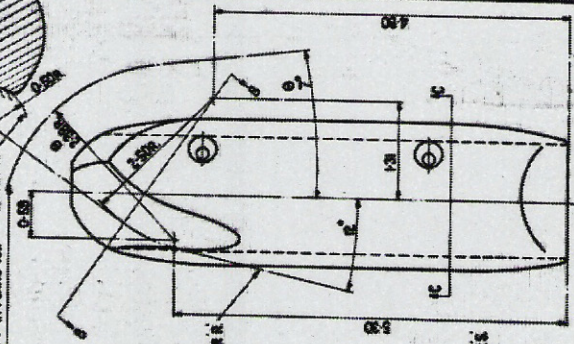
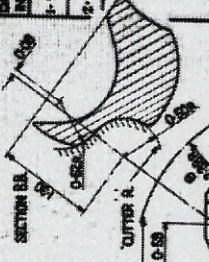
SEALED. 7-10-44. (REV.)

CASE & NATURE	NATURE
1-9-40	REFERENCE TO A'S BORE WEARING FROM RELOADING.
2-9-40	RELOADING WAS STOPPED, ORDER, INSPECTION MADE, NO. 1/1.
3-9-40	INSPECTION MADE, NO. 1/1.

FOR EXPLANATION OF DIMENSIONING, ETC., SEE NOTE SHEET I.



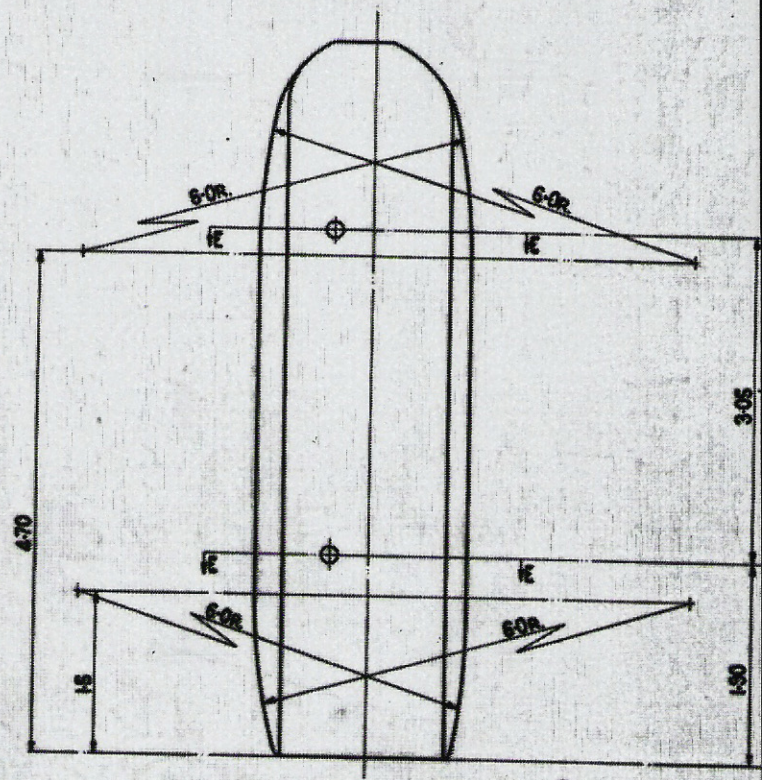
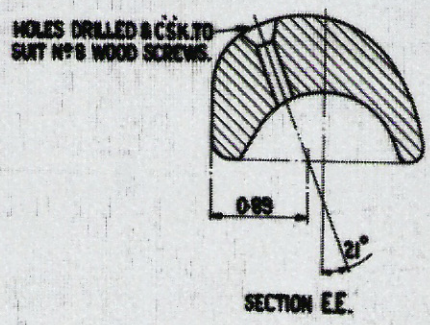
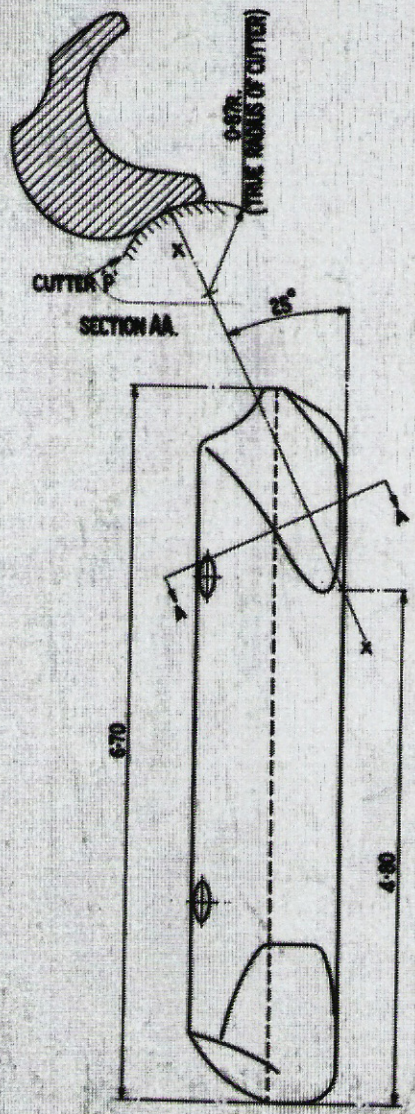
NOTE: DIMENSIONS MARKED @ COVER TAIL PART OF CUTTER IN PLANE XX.



ALL DIMENSIONS FROM CUTS ARE TO BE TAKEN.  
 ALL DIMENSIONS FROM CUTS ARE TO BE TAKEN.  
 ALL DIMENSIONS FROM CUTS ARE TO BE TAKEN.

00013363	DATE	BY	CHKD	APP'D

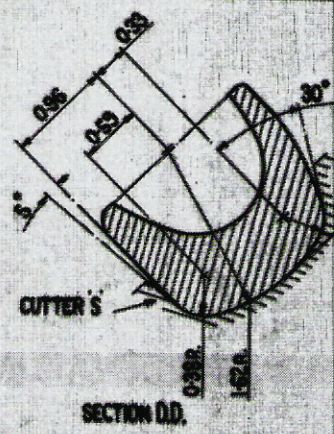
NO. 1/1 RIFLE, MK. I, 1/1



**NOTE:** ALL EDGES DEVELOPING FROM CUTS ARE TO BE REMOVED.

**MATERIAL:** ANY APPROVED HARD WOOD.

**FINISH:** (STAINED BROWN IF MADE FROM WHITE HARD WOOD) OILED.



REST, CHEEK, N° 4 (T) RIFLE, MK. I./L/

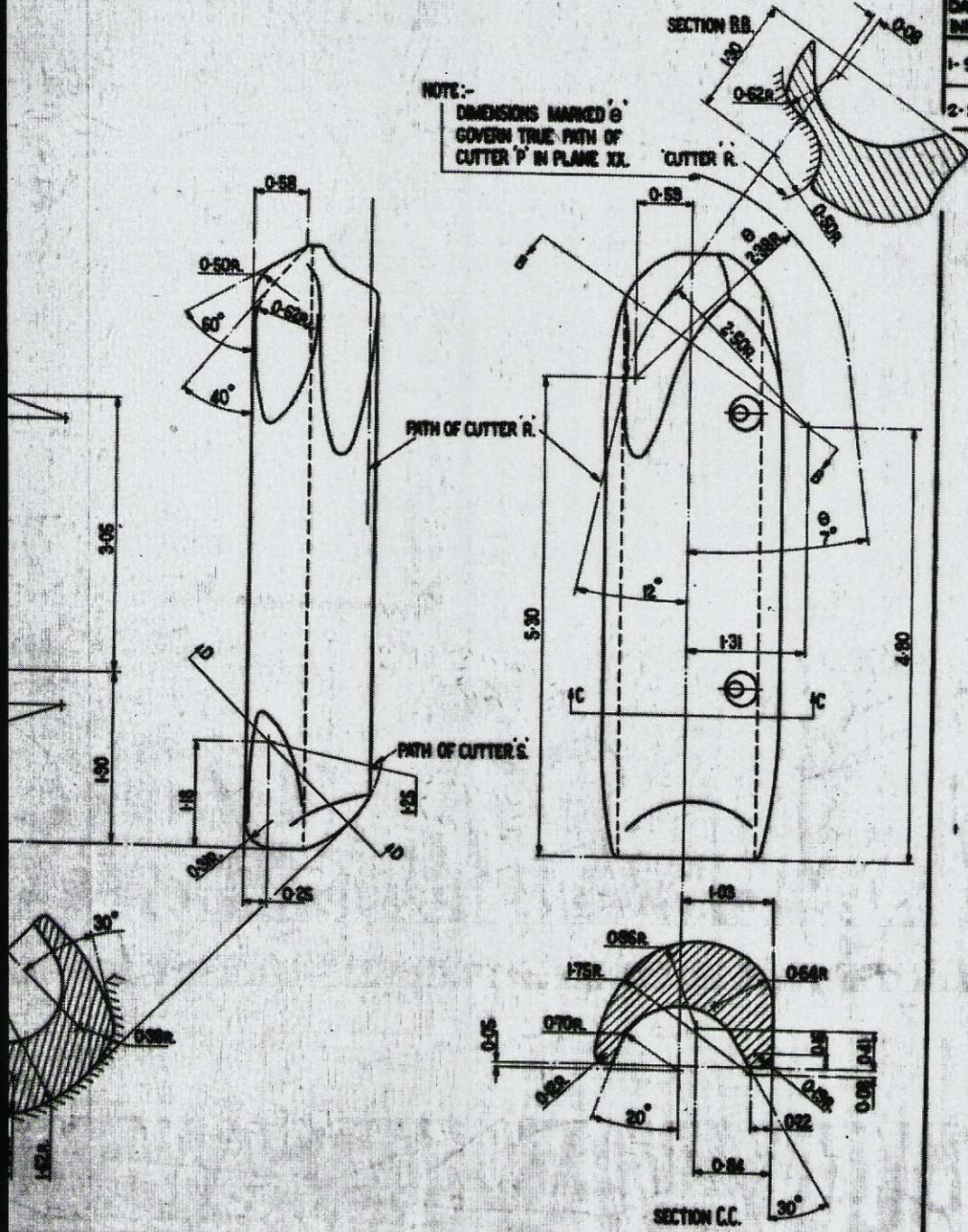
FOR EXPLANATION OF DIMENSIONING, ETC., SEE NOTE SHEET E.

SEALED. 7-10-44. (R61.)

AMENDMENTS

DATE & INITIALS	NATURE
1-9-46	REFERENCE TO THIS RIFLE DERIVED FROM REVENUE LATURE. I.I.M. 17. 6
2-9-45	REVENUE LATURE WAS REBY, CHECK, TELESCOPE RIFLE, PK. 1/4. I.I.M. 66. 5

NOTE:-  
DIMENSIONS MARKED @ GOVERN TRUE PATH OF CUTTER 'P' IN PLANE XX.

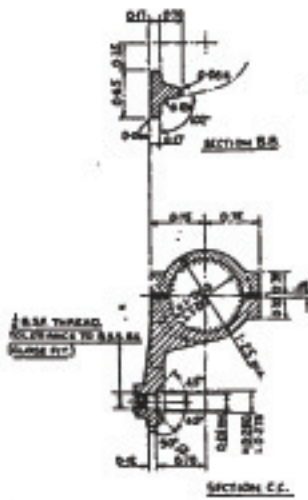
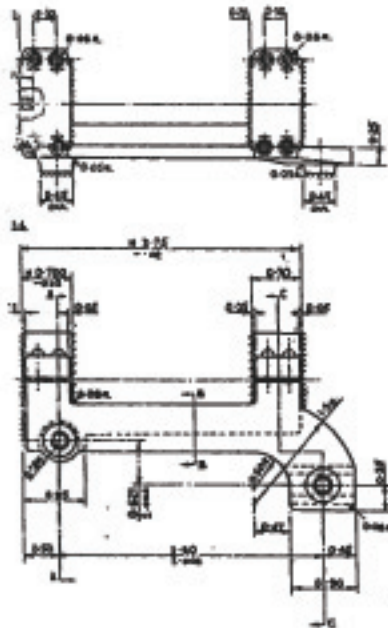


DDF 3563.

DESIGNED BY	1/10	CHECKED BY	2/10
SCALE	1/2	DATE	7-10-44

RECEIVED

1-9-46	2-9-45		
--------	--------	--	--



MATERIAL: MALLEABLE IRON S.S. 370.

ALL DIMENSIONS UNLESS OTHERWISE SPECIFIED.

PROTECTIVE FINISH TO SPEC. Q179, FROM THE BOX FOR REMANAGED.

HOLDER PART NO. CR 470 D.D.(E)2441/1



DATE OF CONSTRUCTION

D.D.(E)2441/4

CR 507 & CR 508 BELONG TO THE MODIFICATION TO M1A RIFLE AND ARE NOT TO BE MANUFACTURED UNLESS SPECIFICALLY ORDERED.

SURFACE FINISH

C. 0779

D.D.(E)2441/5

DRAWING COMPLETED		FOR
DRAWING SEALED	DATE	APPROVED
AMENDMENTS		
MODIFICATION TO DRAWING TELESCOPE M1A RIFLE BY 32 TELESCOPE IN BOX, DRAWING NO. 32, SEE 1 TELESCOPE	1.1.1938	2-8-48
DESIGNS DEPT. IN PART OF MODIFICATION OF PARTS DELETED. PARTS LIST OF ANTI-BLAST FROM	K. 124	2-1-49
CR 470, CR 497, CR 507, CR 508, CR 509, CR 510, CR 511, CR 512, CR 513, CR 514, CR 515, CR 516, CR 517, CR 518, CR 519, CR 520, CR 521, CR 522, CR 523, CR 524, CR 525, CR 526, CR 527, CR 528, CR 529, CR 530, CR 531, CR 532, CR 533, CR 534, CR 535, CR 536, CR 537, CR 538, CR 539, CR 540, CR 541, CR 542, CR 543, CR 544, CR 545, CR 546, CR 547, CR 548, CR 549, CR 550, CR 551, CR 552, CR 553, CR 554, CR 555, CR 556, CR 557, CR 558, CR 559, CR 560, CR 561, CR 562, CR 563, CR 564, CR 565, CR 566, CR 567, CR 568, CR 569, CR 570, CR 571, CR 572, CR 573, CR 574, CR 575, CR 576, CR 577, CR 578, CR 579, CR 580, CR 581, CR 582, CR 583, CR 584, CR 585, CR 586, CR 587, CR 588, CR 589, CR 590, CR 591, CR 592, CR 593, CR 594, CR 595, CR 596, CR 597, CR 598, CR 599, CR 600, CR 601, CR 602, CR 603, CR 604, CR 605, CR 606, CR 607, CR 608, CR 609, CR 610, CR 611, CR 612, CR 613, CR 614, CR 615, CR 616, CR 617, CR 618, CR 619, CR 620, CR 621, CR 622, CR 623, CR 624, CR 625, CR 626, CR 627, CR 628, CR 629, CR 630, CR 631, CR 632, CR 633, CR 634, CR 635, CR 636, CR 637, CR 638, CR 639, CR 640, CR 641, CR 642, CR 643, CR 644, CR 645, CR 646, CR 647, CR 648, CR 649, CR 650, CR 651, CR 652, CR 653, CR 654, CR 655, CR 656, CR 657, CR 658, CR 659, CR 660, CR 661, CR 662, CR 663, CR 664, CR 665, CR 666, CR 667, CR 668, CR 669, CR 670, CR 671, CR 672, CR 673, CR 674, CR 675, CR 676, CR 677, CR 678, CR 679, CR 680, CR 681, CR 682, CR 683, CR 684, CR 685, CR 686, CR 687, CR 688, CR 689, CR 690, CR 691, CR 692, CR 693, CR 694, CR 695, CR 696, CR 697, CR 698, CR 699, CR 700, CR 701, CR 702, CR 703, CR 704, CR 705, CR 706, CR 707, CR 708, CR 709, CR 710, CR 711, CR 712, CR 713, CR 714, CR 715, CR 716, CR 717, CR 718, CR 719, CR 720, CR 721, CR 722, CR 723, CR 724, CR 725, CR 726, CR 727, CR 728, CR 729, CR 730, CR 731, CR 732, CR 733, CR 734, CR 735, CR 736, CR 737, CR 738, CR 739, CR 740, CR 741, CR 742, CR 743, CR 744, CR 745, CR 746, CR 747, CR 748, CR 749, CR 750, CR 751, CR 752, CR 753, CR 754, CR 755, CR 756, CR 757, CR 758, CR 759, CR 760, CR 761, CR 762, CR 763, CR 764, CR 765, CR 766, CR 767, CR 768, CR 769, CR 770, CR 771, CR 772, CR 773, CR 774, CR 775, CR 776, CR 777, CR 778, CR 779, CR 780, CR 781, CR 782, CR 783, CR 784, CR 785, CR 786, CR 787, CR 788, CR 789, CR 790, CR 791, CR 792, CR 793, CR 794, CR 795, CR 796, CR 797, CR 798, CR 799, CR 800, CR 801, CR 802, CR 803, CR 804, CR 805, CR 806, CR 807, CR 808, CR 809, CR 810, CR 811, CR 812, CR 813, CR 814, CR 815, CR 816, CR 817, CR 818, CR 819, CR 820, CR 821, CR 822, CR 823, CR 824, CR 825, CR 826, CR 827, CR 828, CR 829, CR 830, CR 831, CR 832, CR 833, CR 834, CR 835, CR 836, CR 837, CR 838, CR 839, CR 840, CR 841, CR 842, CR 843, CR 844, CR 845, CR 846, CR 847, CR 848, CR 849, CR 850, CR 851, CR 852, CR 853, CR 854, CR 855, CR 856, CR 857, CR 858, CR 859, CR 860, CR 861, CR 862, CR 863, CR 864, CR 865, CR 866, CR 867, CR 868, CR 869, CR 870, CR 871, CR 872, CR 873, CR 874, CR 875, CR 876, CR 877, CR 878, CR 879, CR 880, CR 881, CR 882, CR 883, CR 884, CR 885, CR 886, CR 887, CR 888, CR 889, CR 890, CR 891, CR 892, CR 893, CR 894, CR 895, CR 896, CR 897, CR 898, CR 899, CR 900, CR 901, CR 902, CR 903, CR 904, CR 905, CR 906, CR 907, CR 908, CR 909, CR 910, CR 911, CR 912, CR 913, CR 914, CR 915, CR 916, CR 917, CR 918, CR 919, CR 920, CR 921, CR 922, CR 923, CR 924, CR 925, CR 926, CR 927, CR 928, CR 929, CR 930, CR 931, CR 932, CR 933, CR 934, CR 935, CR 936, CR 937, CR 938, CR 939, CR 940, CR 941, CR 942, CR 943, CR 944, CR 945, CR 946, CR 947, CR 948, CR 949, CR 950, CR 951, CR 952, CR 953, CR 954, CR 955, CR 956, CR 957, CR 958, CR 959, CR 960, CR 961, CR 962, CR 963, CR 964, CR 965, CR 966, CR 967, CR 968, CR 969, CR 970, CR 971, CR 972, CR 973, CR 974, CR 975, CR 976, CR 977, CR 978, CR 979, CR 980, CR 981, CR 982, CR 983, CR 984, CR 985, CR 986, CR 987, CR 988, CR 989, CR 990, CR 991, CR 992, CR 993, CR 994, CR 995, CR 996, CR 997, CR 998, CR 999, CR 1000	2-11-50	
CR 52 A - CR 470 AND CR 497 (CR 470 AND CR 497)	2-11-50	

PART NO. CR 52.A.  
CR 470, CR 497,  
CR 507-CR 509.

D.D.(E)2441/1

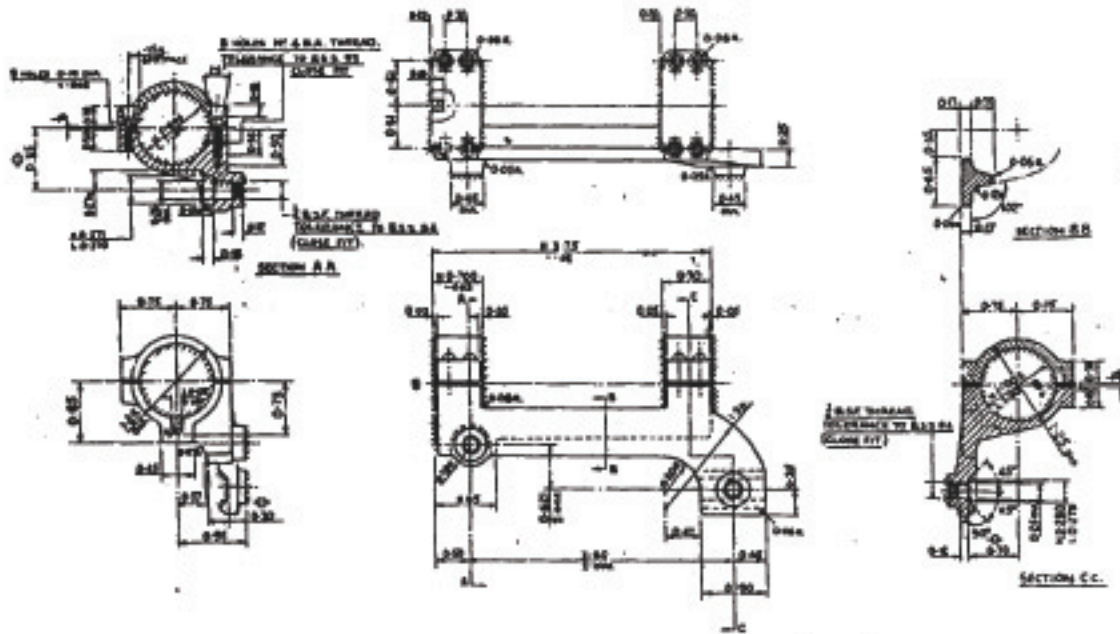
FORM NO. 21-1 (REV. 12-13-46) (USE FOR ALL DRAWINGS)

DRAWING NO. 2441/1

**DRAWING SEALED**  
**AMENDMENTS**  
 NUMBERING SYSTEM TELETYPE NO. 470, TELETYPE NO. 470, USE NO. 12, USE 1, 1

DESIGNED BY: S. P. CONNOR  
 CHECKED BY: S. P. CONNOR  
 DRAWN BY: S. P. CONNOR  
 DATE: 11/15/44

CR 470 - CR 470 - CR 470 - CR 470



1/2\"/>



1/2\"/>

**FIN. BODY, REAR**  
 0.4 BODY TO FRONT  
 WITHIN AND  
 0.2 OF 2 MINUTES  
 NO HOLDER TO BE

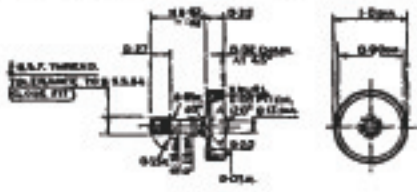
TELETYPE NO. DIMENSIONS MARKED @ ON DRAWING  
 MUST BE SUCH THAT AN APPROPRIATE SOLUTION ON  
 ALIGNMENT OF TELETYPE DOES NOT EXCEED  
 1/2 MINUTES HORizontally AND 5 MINUTES OF PROGRAM  
 ON 1/2 OF END APPROX 5/8

**MATERIAL: SAE 5160 STEEL, B&S ENI.**  
**ALL DIMENSIONS UNLESS OTHERWISE SPECIFIED**

PROTECTIVE FINISH TO SPEC. Q17A,  
 PHOSPHATE COAT IN CASE OF SECURING FACES.  
 PHOSPHATE COAT FOR REMANENCE

**HOLDER PART NO. CR 470**

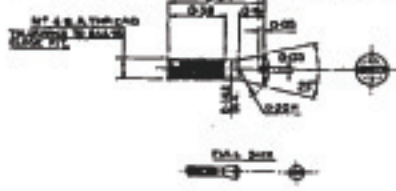
DD(E)2441/1



**MATERIAL: STEEL, B&S ENI.**  
**PROTECTIVE FINISH TO SPEC. Q17A,  
 PHOSPHATE COAT IN CASE OF SECURING FACES.  
 PHOSPHATE COAT FOR REMANENCE**

**SCREW PART NO. CR 509**

DD(E)2441/4



**BEST TREATMENT - OILS AND SURFACE HARDENED**

**MAT - STEEL, B&S ENI.**

PROTECTIVE FINISH TO SPEC. Q17A,  
 PHOSPHATE COAT

CR 507 & CR 508 BELONG TO THE MODIFICATION TO MPA RULE  
 AND ARE NOT TO BE MANUFACTURED UNLESS SPECIFICALLY ORDERED.

**NO. 5 DD(E)2441/3**

**SCREW PART NO. CR 497 D.O.(E)2441/5**

COPE. NO 4 (r) RIFLE, MK. I.

**PART NO. CR 470 CR 509**