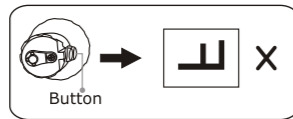
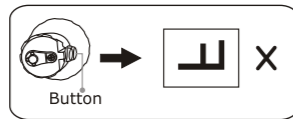
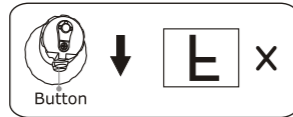


DIRECTION OF RECORDING INSTRUCTIONS



Please make sure the button of the flashlight DVR on top during recording, otherwise, video files will do not correctly display.



SPECIFICATIONS

	Items	GD2706
Flashlight DVR	Imaging Sensor	Color CMOS
	Active Array Size	640×480(pixels)
	Video Resolutions	352×288 (CIF)
	View Angle	58°
	Video Format	3GP
	Video File Size	>2M Byte/ minute
	View Resolutions	352 x 288(CIF)
	Storage Medium	Built-in Memory with 2G
	Power Supply	Li-battery
	Consumption Current(Max.)	440mA
	Dimensions(W x D x H)	56×56×194(mm)
	Weight(about)	304g
	Operating Temperature	-10°C~+50°C/+14°F~+122°F
Operating Humidity	15~85%RH	

FCC INFORMATION

This device complies with part 15 of the FCC Rules. Operation is subject to the following two conditions:

- (1) this device may not cause harmful interference,
- (2) this device must accept any interference received, including interference that may cause undesired operation.

Changes or modifications not expressly approved by the party responsible for compliance could void the user's authority to operate the equipment.

Cautions

- The apparatus shall not be exposed to dripping or splashing and that no objects filled with liquids, such as vases, shall be placed on the apparatus.
- Turn off the camera if the system is not in use.

EU Environmental Protection

Waste electrical products should not be disposed of with household waste. Please recycle where facilities exist. Check with your Local Authority or retailer for recycling advice.



User Manual

Flashlight DVR
Model No.: GD2706

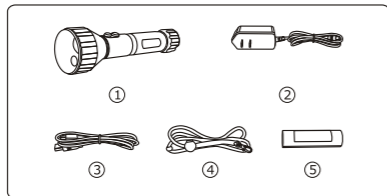
Version No.: 1.0

WELCOME

Thank you for choosing the Flashlight DVR product. So as to operate the recorder more easy and record the nice pictures, please read the User Manual carefully before your using the product.

PACKING LIST

- ① Flashlight DVR x 1
- ② Adapter x 1
- ③ USB Cable x 1
- ④ Rope x 1
- ⑤ Lithium Battery x 1



The pictures are for reference only, please refer to real object.

STRUCTURE

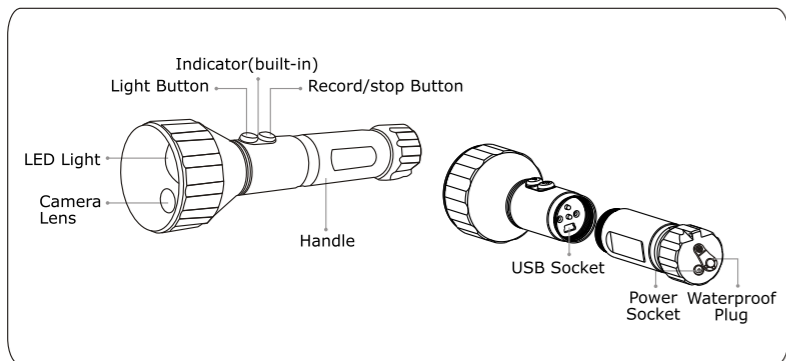
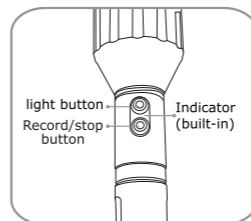


DIAGRAM OF OPERATION

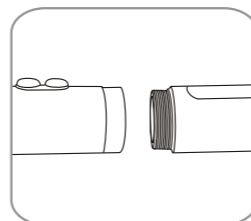
Operating Instructions:

1. Press the Light button, LED light turns ON with strong light; Press again, LED light turns weak; LED shut off in the third press.
2. Press the Record/stop button to start recording and once again to stop. The indicator is twinkling in recording.

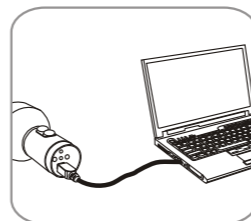


Output Data:

1. Screw off the handle of flashlight DVR.

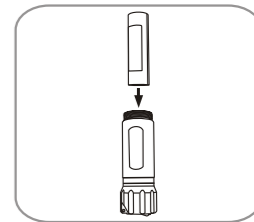


2. Connect the flashlight DVR to PC directly by USB cable.



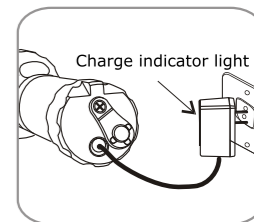
Install The Lithium Battery:

1. Screw off the flashlight DVR handle.
2. Install the Li-battery into handle without polarity.



Battery Charge:

1. Open the waterproof cover.
2. Connect the Flashlight DVR to power adapter, the indicator of adapter lights red in charging and turns green after full charge.



NOTES:

1. If the battery is exhausted, the indicator(built-in) turns Red light and twinkle, the video files will automatically saved before shut down.
2. While recording, the video will be automatically saved as a file every 30 minutes.
3. The recorder also works as USB disk when connected to a computer.

Tip: When the LED in the strong light or weak status, press and hold the light key for about 2 seconds to turn OFF the LED.