

Warranty Information

The manufacturer warrants their products to be free from defects in material or workmanship for a period of one year from the date of the original purpose. The limited warranty stated above is subject to these terms and conditions.

TERMS AND CONDITIONS

Limitation on Warranties: All merchandise carries a one (1) Year Manufacturer's Limited Warranty on parts and labor. SELLER MAKES NO WARRANTY, EXPRESSED OR IMPLIED, INCLUDING ANY WARRANTY OR FITNESS FOR ANY PARTICULAR PURPOSE OR MERCHANTABILITY. No agent, employee or representative of Seller's are authorized to bind the Seller to any affirmation, representation, or warranty, oral or written, unless by separate written instrument designed by Seller, which by its terms state that it is included as part of this agreement.

Claims: Receipt of goods shall be deemed acceptance of the goods received. All claims for defective goods or revocation of acceptances, for shortages, for delays, or failures in shipment or delivery, or for any cause shall be deemed waived and released by the Buyer unless it is made in writing within (7) days after receipt of goods. All claims must state specifically and in reasonable detail the nature of all objections, and must be accompanied by delivery receipt or photocopy of the sales order or packing slip. Any delivery not placed in dispute in a timely manner shall be paid for by the Buyer and all uncontested amounts due shall be paid by the Buyer with terms specified. As a condition to making a claim for missing or damaged goods sent, the Customer is responsible for initiating and pursuing with the carrier.

Limitation on Seller's Liability: Seller's liability will be limited to replacement or repair of defective goods upon receipt of goods in a timely manner per paragraph two herein. In no event will Seller be liable for consequential or special damages or for transportation, installation, removal, adjustment or other expenses or losses which may arise in connection with the use or installation of the goods; late delivery, failure to deliver or from any other cause. Notwithstanding the terms of this Agreement, if there should arise any liability of Seller, such liability shall be limited to an amount equal to one-half (1/2) the costs of the goods or \$250.00, whichever is less.

Returned Material: In no case will the seller give a refund. Seller will accept most goods for exchange or credit, at the Seller's discretion within 30 days of purchase date. In no case are goods to be returned without first obtaining Seller's permission. Only unused goods as currently manufactured, in original unopened packaging and which has been paid for by Buyer in accordance with Seller's payment terms will be considered for exchange or credit upon receipt of proof of purchase. Special ordered items and obsolete items cannot be returned for credit. Material accepted for credit will be subject to a 15% restocking charge for service and handling. Seller will not be obliged to replace any product that has been abused, improperly installed or otherwise misused. Items must be returned in their original packaging, securely packed to reach the Seller without damage.

Governing Law: This agreement shall be governed by the laws of the State of Tennessee.

IT IS THE USER'S RESPONSIBILITY TO ENSURE THAT THIS EQUIPMENT IS USED IN ACCORDANCE WITH THE LAW(S) OF THE JURISDICTION IN WHICH THIS EQUIPMENT IS UTILIZED.

DO NOT ATTEMPT TO RETURN PRODUCT TO ORIGINAL MANUFACTURER, AS THIS PRODUCT HAS BEEN MODIFIED AND IS NO LONGER SUBJECT TO ORIGINAL MANUFACTURER'S WARRANTY. IN THE CASE OF A DEFECTIVE PRODUCT, CONTACT PLACE OF PURCHASE FOR RETURN PROCEDURE.

THIS EQUIPMENT HAS BEEN TESTED AND HAS BEEN FOUND TO BE IN COMPLIANCE WITH THE LIMITS FOR A CLASS B DIGITAL DEVICE, PURSUANT TO PART 15 OF THE FCC RULES. THESE LIMITS ARE DESIGNED TO PROVIDE REASONABLE PROTECTIONS AGAINST HARMFUL INTERFERENCE IN A RESIDENTIAL INSTALLATION. THIS EQUIPMENT USES, GENERATES AND CAN RADIATE RADIO FREQUENCY ENERGY AND IF NOT INSTALLED AND USED IN ACCORDANCE WITH INSTRUCTIONS, MAY CAUSE HARMFUL INTERFERENCE TO RADIO COMMUNICATIONS.

Part 15 Low Power:

ANY CHANGES OR MODIFICATIONS TO THIS EQUIPMENT WITHOUT THE EXPRESS AUTHORIZATION OF THE MANUFACTURER COULD VOID THE USER'S AUTHORITY TO OPERATE THIS EQUIPMENT. (RULE 15.21 OF THE FCC)

SleuthGear™
COVERT
Hidden Video Recorder



all-in-one DVR
and hidden camera system

SleuthGear™ Covert HVR
1 2GB SD Memory Card
1 USB Card Reader
1 Remote Control
1 USB extension cable
1 Video Cable

Please check the package to be sure you have received all of the parts

**Congratulations and Thank You
for purchasing the SleuthGear™ Camera!**

SleuthGear™ HVR system is an all-in-one DVR and hidden camera. All you need to do is plug it in, set the time and date, insert an SD card and the system will begin to record when it detects any motion. The SleuthGear™ HVR system has many advanced features and functions but the best feature is already preset for your quick set up.

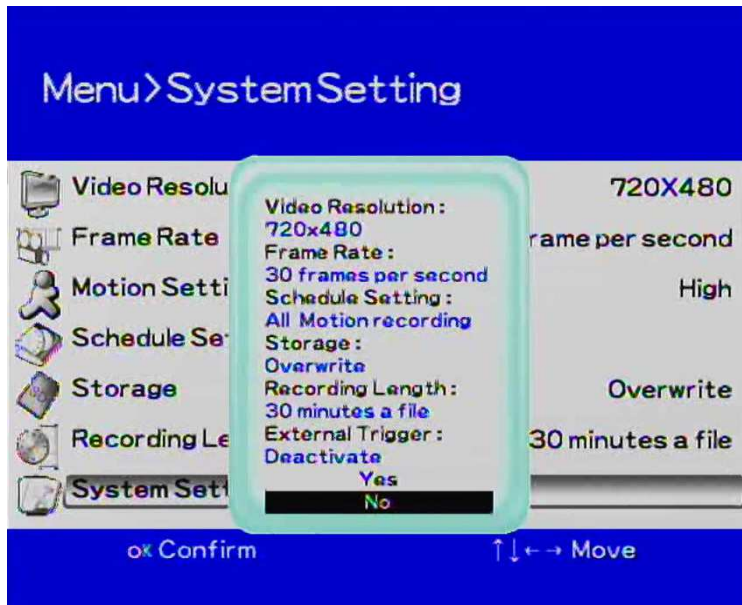
Quick Set up Guide

For your convenience the unit is set at the factory for setting most commonly used making your set up fast and easy. To see what the factory setting are go to page 10.

1. Take out the SleuthGear™ and plug it in to any available wall outlet.
2. Facing the back of the unit locate the *Video-Out Jack* (See Diagram 1 on page 3)
- 3) Using the included *Video Cable* plug cable into the *Video-Out Jack*. Connect the other end of the *Video Cable* to a Television input.
3. Change the video input or auxiliary on your TV. The input select button is usually located on the TV's remote control or on the front panel of the TV itself, however, some TV's may require you to select the video input from the on-screen menu. Therefore, consult the owner's manual for the for specific instructions.
4. When you have a picture on your Television; using the included HVR remote press the *Menu* button to enter menu screen.
5. Set up Time and Date Go to system settings press ok select date/time, select adjust date time put in correct time and date press ok then press esc button. Back to main menu. Press esc once more to be back at video image
6. Find the SD slot see above diagram put in the SD card and your unit is ready to record video
7. Set unit in desired location for video surveillance and your finished.

If you wish to change factory default setting you would need to go through the entire menu and pick your desired selections. See Advanced Features instructions to change default settings beginning on page 5

Factory Default Setting and Menu



SD card capacity (Times are Approximate)	720 x 480 @ 30fps	320 X 240 @ 30fps
1 GB	2 hours	4 hours
4GB	8 hours	16 hours
8GB	16 hours	33 hours
16GB	32 hours	66 hours

Safety Precautions and Notes

Use only the included power supply to operate your SleuthGear™ system (**AC: 120 Volt, 60 Hz ONLY, if outside the US and Canada a special adaptor may be required**).

To avoid electrical shock, do not attempt to open the unit.

Opening the unit Voids the warranty

To prevent fire or shock hazard, do not expose this product to rain or moisture.

Do not operate near bath tub, sink, or swimming pool.

Avoid operation in moist environments.

Do not overload electrical outlets or extension cords as this may result in fire

or electric shock, this unit works only on 120 Volt . **Power surges or over voltage (i.e. 220 Volt) will damage the unit and void the warranty. A surge suppressor and other adaptors may be required and are the responsibility of the user.**

Features and Functions of the SleuthGear™ Covert HVR



Diagram 1

Video Resolution: real-time video 30 FPS at 720x480 and 320x240 this will also show available recording storage time left on your SD card. See page 10 for details

Frame Rate Settings for recording you may record 1, 2,3,5,15,30 FPS user selectable. Use this setting to gain more memory. See page 10 for details

Motion Setting This allows three motion sensitivity settings, High, Medium and Low, see page 10 for details

Motion Area this allows user to select up 150 motion areas. Example if you have pets you will only choose the area of the frame that the pet would not be viewed. Say the pet was waist high you would choose only to detect motion waist up. See page 10 for details

Scheduling the HVR unit may be programmed to schedule event recording this feature allows the user to select time, day of week to recorder any motion detected or you may select time, day of week and recorder continually. See page 5 for details

Continuous recording you may record continuously without using motion this function would use more memory then the motion activation setting please refer to Capacity chart

Playback on your TV by using the RCA output or Windows Media player using the enclosed card reader or using your SD reader slot on your computer, see page 7 for deatials

File Search from unit push play back see quick search or list all to find files, see page 7 for details

File Review you will have a folder named HVR in that folder is files by date

File Name is saved as YEAR/MONTH/DAY/HOUR/MINUTE/SECOND

Continued on page 4

Continued Features and Functions of the SleuthGear™ Covert HVR

Storage: the unit is set to default to overwrite video when card is full using the first in first out rule: you may change the overwrite function by choosing Full Stop from the storage menu. You may also delete all files from the delete all functions this action will reformat your SD Card, see page 7 for details

Recording length, the unit will record 15 min, 30 min or 1 hour clips when motion is activated for each motion occurrence, if the occurrence is more then 15min, 30 minutes or 1 hour the unit will start a new video upon detection of motion. After motion is triggered and no motion continues the unit will stop recording, see page 10 for details

System Setting Menu

Time and Date Stamp you may display time and date to show on your video clip. It will be embedded in the actual video by the default setting; you may also adjust date format, the position of the stamp and the color of the stamp before you start your recording. This feature may be turned off. See page 8 for details

Language you may choose language setting. See page 9 for details

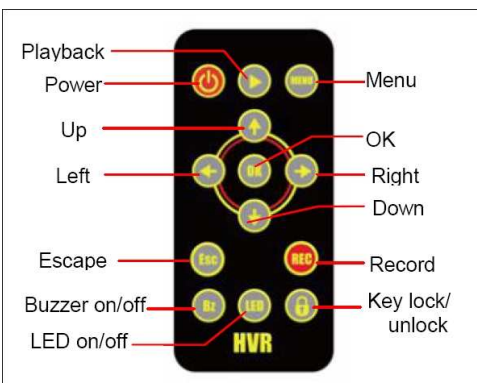
External Trigger this feature is inactive for this application please note do not change setting from disable if change unit will not work properly

Screen Icons/ Status Display the HVR unit will display icons to show your settings this can be turned on or off user selectable see page 8 for details

Factory Default menu this setting list the factory default here you may reset at any-time back to factory default. See page 14 for screen shot of default settings.

Software Status shows your software version and where you may upgrade your software when upgrades become available, see page 9 for details

Remote Control Functions Diagram 2



	Name	Function
	Power	Power on/off the device
	Playback	Playback the recording files
MENU	Menu	Enter the menu setting
	Up	Move upward or increase
	Left	Move left
OK	OK	Confirm the setting/change
	Right	Move right
	Down	Move downward or decrease
Esc	Esc	Escape current menu
REC	REC	Manual record
Bz	Bz	Buzzer on/off
LED	LED	LED on/off
	Keylock	Key lock/unlock

Frequently asked Questions

Q. Why is there a small time gap between the recordings file?

Ans. If the “storage” is set to over write there may be a time gap between the recordings when the old files are deleted.

Q. When I change the time of a scheduled recording it does not change why?

Ans. Before you can change a recording time you must first reset it to “From 00:00 to 00:00” then you will be able to change it.

Q. What player software should I use to playback the recording files?

Ans. You can use popular MPEG-4 player, i.e. Windows Media Player, VLC etc. Windows Media player is the most popular to play back the video, you will need to download the “*K-lite*” Codec for WMP, this can be found online at www.free-codecs.com or you may search for the download.

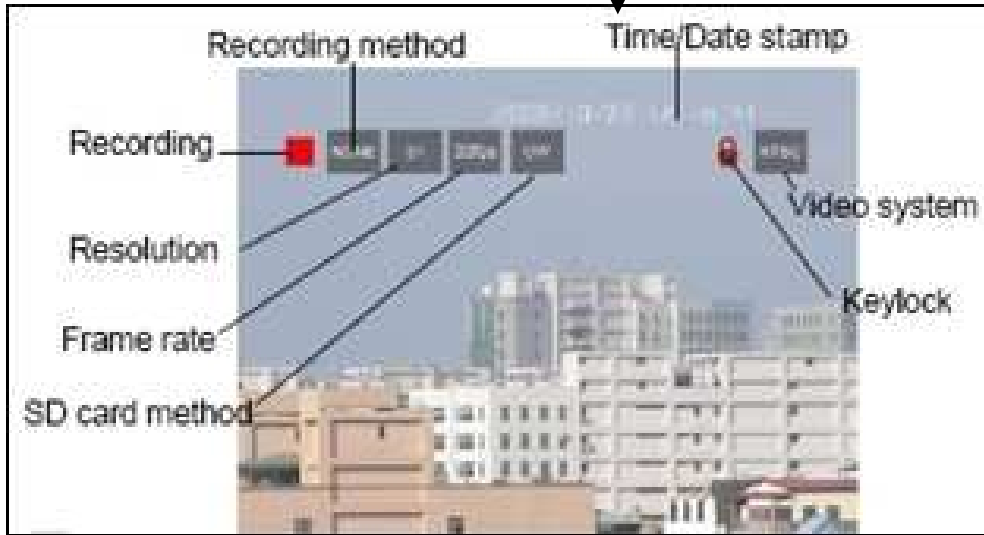
Q. How long can date/time last without outer power supply?

Ans. RTC battery can last for 3 months without power supply (including battery power supply)

Advanced Features for the SleuthGear™ Covert HVR Event Scheduling

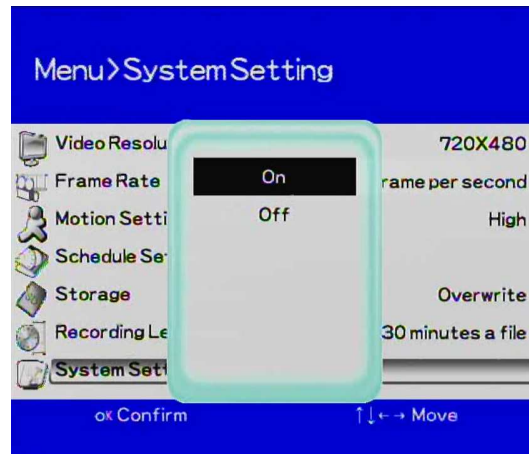
Diagram3

Screen Icons/Status Display



Icon	Function
None	Standby / Not Recording
MD	Motion Detection
Trig	External trigger activated
Cont.	Continuous recording
Manu	Manual recording
D1	720 x 480 resolution
CIF	320 x 240 resolution
OW	Overwrite on SD card
FS	Stop when card is full
NTSC	Video system
PAL	Video system
1fps	Frame rate per second
	Up To
30fps	Frame rate per second

Turn on off the screen Icons/Status Display



The Units default setting for recording is Motion activated for all days, To change this feature of the remote and follow these steps.

Point the remote at the unit and press the menu button, this will bring up the menu (diagram 4 below) . Select Schedule Setting. The Menu for Schedule setting appears (diagram 5 below) You may select “All” for each day or use the arrows on the remote to scroll to any day on the menu to change that recording options for a particular day. The unit is set up on a 24 hour clock GMT.

To set motion for an entire day change the motion schedule setting to “From 00:00 to 23:59” press ok on the remote, scroll to finish and select finish.

Examples to set motion for Tuesday only for 1/2 a day, change the time as shown: 12:00 to 23:59, this will schedule the motion to work only from 12 noon to midnight on Tuesday.

From 00:00 to 23:59 will record for 24 hours

From 00:00 to 12:00 will record from midnight till noon

Events in red are Continuous recording and events in green are Motion

Note: To change a recording time you must first erase the time (to erase “From 00:00 to 00:00”), then change it:

Diagram 4 Main Menu

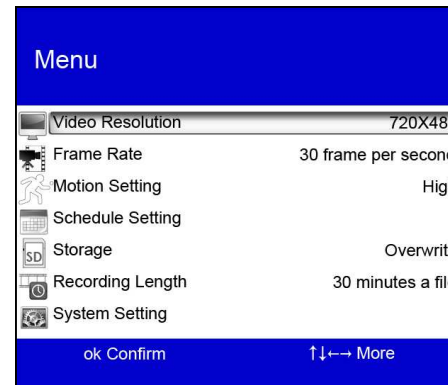
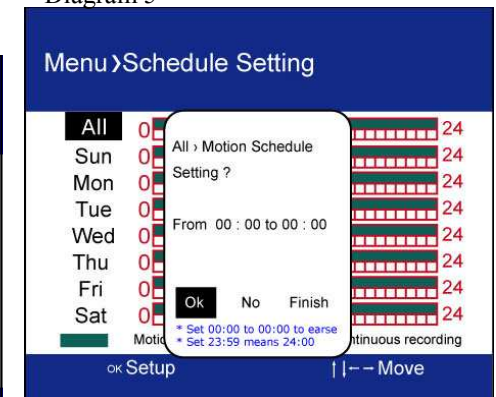
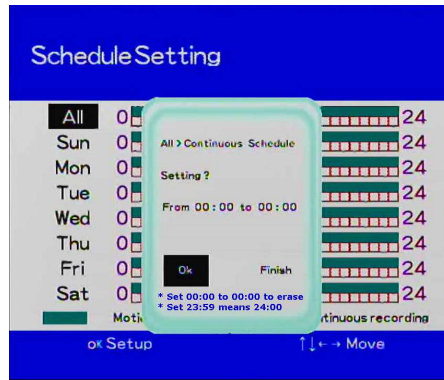


Diagram 5

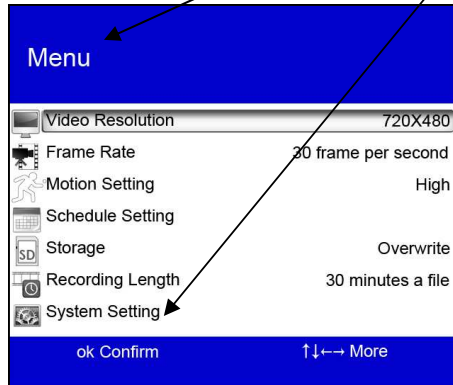


To set for Continuous recording:
 In the menu press ok to bring up the All> Motion Schedule Setting, scroll to No and press ok, then continuous recording will come up on the screen scroll to ok and press ok, scroll to finish and press ok. This will set up continuous recordings for what ever times you choose.



To continuous record for 24 hours set "From 00:00 to 23:59" do this for any selected day you choose or "All"

Other functions of your SleuthGear Hidden Camera Set can be found in the Menu / System Setting Screen



To turn off or turn on the lights on the board Press the LED button on the remote

LED status			
Red LED	On Power on	X	Off Power off
Green LED	On System ready, SD card normal, and has schedule	Blinking System and SD card normal, but doesn't have schedule	Off System not ready or SD card abnormal
Yellow LED	On Battery charging	Blinking Running out of battery, please charge it	Off Battery not charging

To turn off or on the beep sounds press BZ on the remote

How to use the enclosed SD card reader

Be sure SleuthGear™ is turned off and remove the SD (Secure Digital) card from the card slot.

Remove the card by pushing in on the card once and the card will eject out of the slot. After removing the card from the SleuthGear™ insert the card directly into your computer if you have an SD readable card slot. If not use the supplied card reader, simply insert the card into the reader and insert the reader USB end into your computer. If your USB slots are not easily accessible, use the provided USB cable. The Video will show up on your computer using Window Media Player.

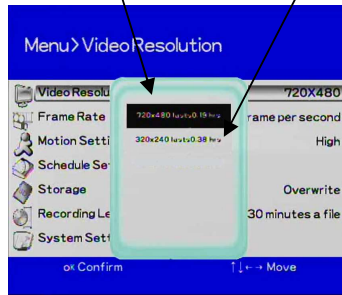
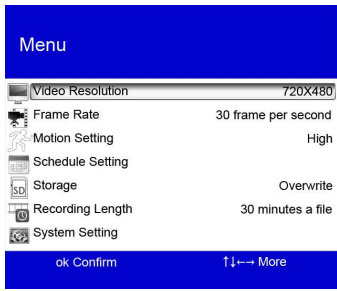
If you have trouble viewing the video on WMP down load the "K-lite codec for WMP" it can be found @ http://www.free-codecs.com/download/K_lite_codec_pack.htm

Note: Do not remove the secure digital card from SleuthGear™ the or the computer while it is in use. Doing this will cause data on the card to be lost

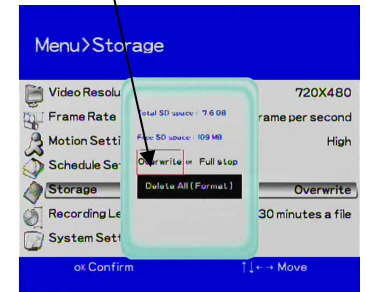
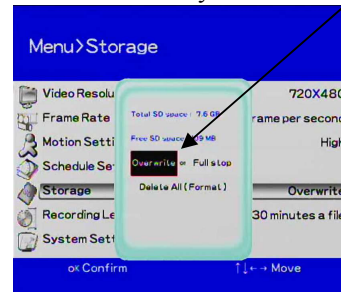


- SleuthGear™ Covert HVR**
- 1 2GB SD Memory Card**
- 1 USB Card Reader**
- 1 Remote Control**
- 1 USB extension cable**
- 1 Video Cable**

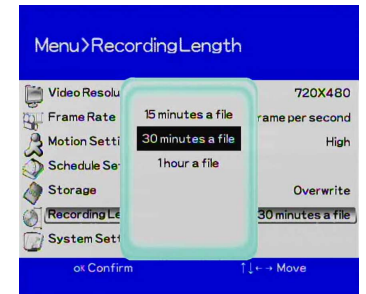
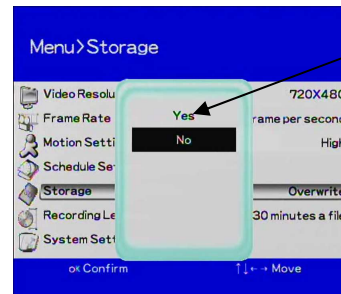
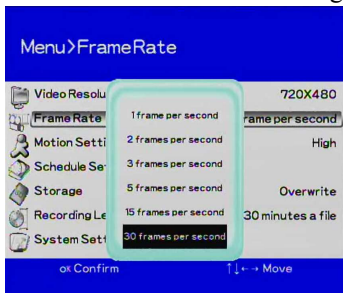
Video Resolution: real-time video 30 FPS at 720x480 and 320x240 this will also show available recording storage time on your SD card



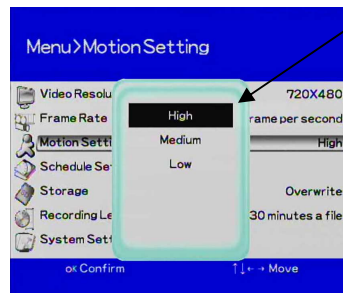
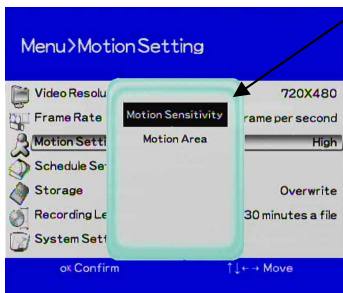
Storage: the unit is set to default to overwrite video when card is full using the first in first out rule: you may change the overwrite function by choosing Full Stop from the storage menu. You may also delete all files from the delete all functions this action will reformat your SD Card.



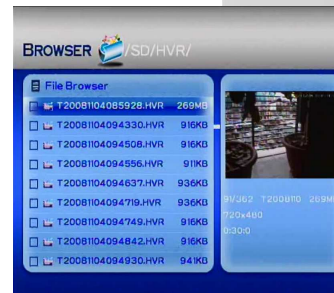
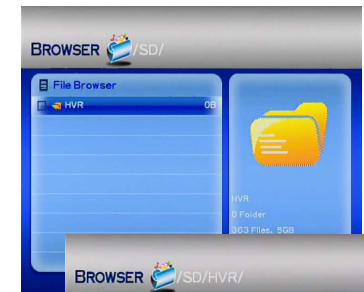
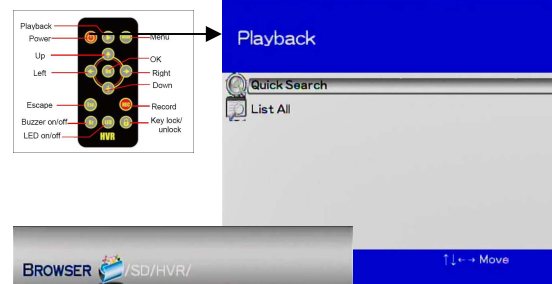
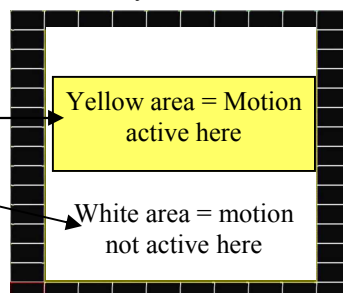
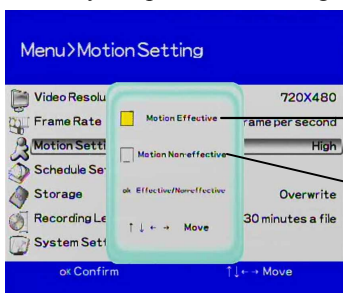
Frame Rate Settings for recording you may record 1, 2,3,5,15,30 FPS user selectable. Use this setting to gain more memory.



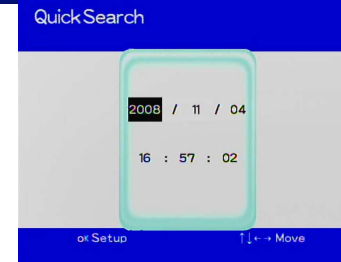
Motion Setting This allows three motion sensitivity settings, High, Medium and Low



Motion Area this allows user to select up 150 motion areas. Example if you have pets you will only choose the area of the frame that the pet would not be viewed. Say the pet was waist high you would choose only to detect motion waist up.



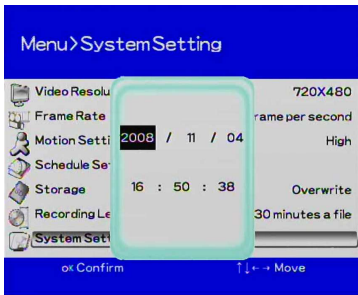
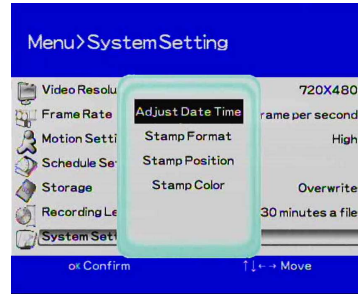
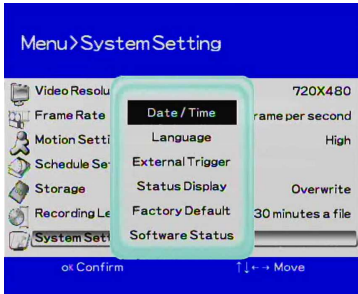
File Search from unit Only push play back see quick search or list all to find files



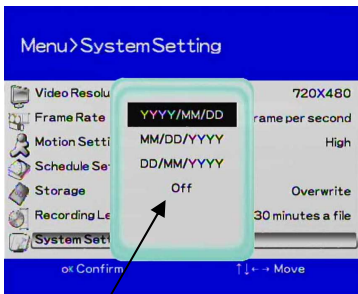
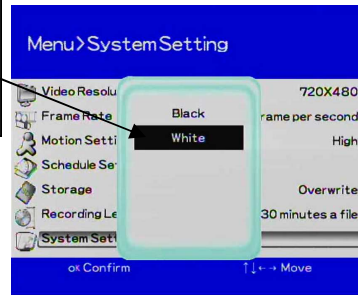
TIP: You can also use the SD card to playback

System Settings

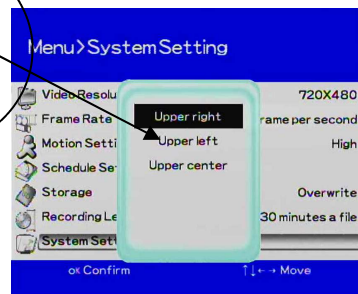
Time and Date Stamp you may display time and date to show on your video clip. It will be embedded in the actual video by the default setting; you may also adjust date format, the position of the stamp and the color of the stamp before you start your recording. This feature may be turned off.



Change the Color of the time and date stamp on the video

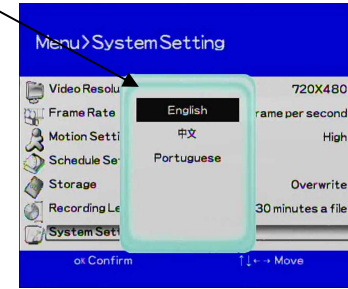


Change the Position of the stamp on the video



Choose how the time and date will appear or not appear on your video

Language you may choose language setting.



Software Status shows your software version and where you may upgrade your software when upgrades become available to upgrade select Yes or No

