

# **2.4GHz USB Digital Wireless Security Kit**

## **USER MANUAL**



## Guides You into a Harmonious World

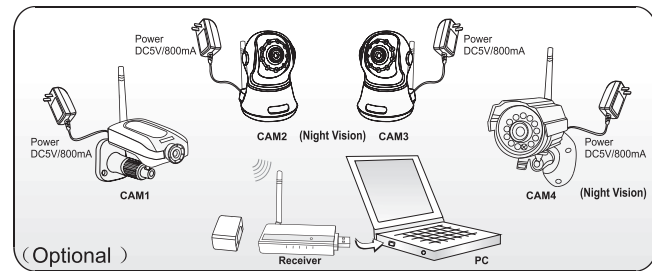


Any relevant alteration is subject to the latest real object !


## 2.4G Digital Wireless Kit

### I . Introduction:

- Four channel available monitoring at the same time
- Audio & Video Recording, Image Capturing
- Network Remote Monitoring
- Video Clips Played by our software or any other Video Player
- USB2.0
- Support Date, Time, Week Stamps
- Intelligent Search



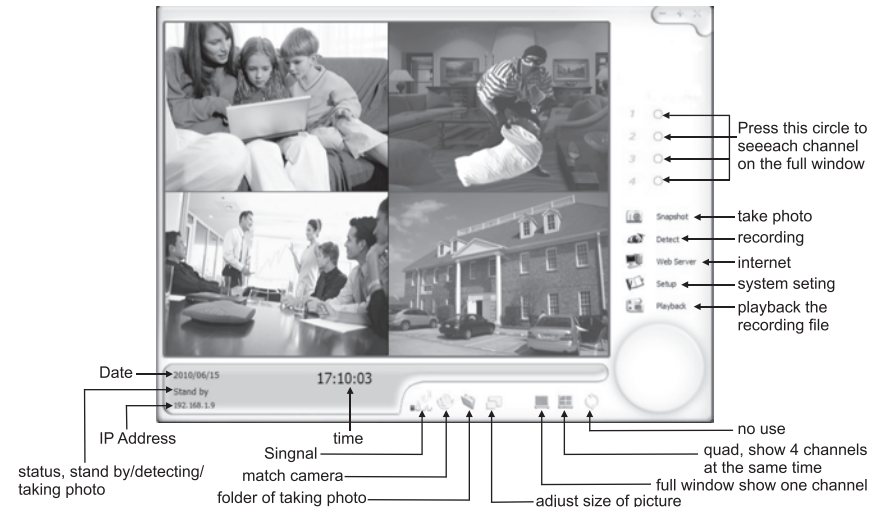
## II. Installation Software

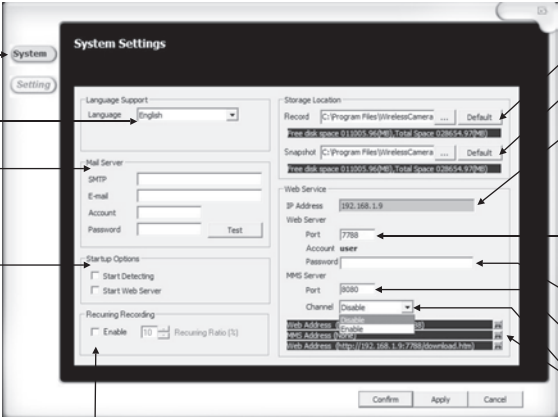
1. Install " setup.exe " 
2. Plug in the USB receiver
3. Run program file

System configuration:

	Basic	Recommend
CPU	Pentium4 2.0 GHz	Pentium4 3.0 GHz or more
RAM	512 MB	1 GB or more
Resolution	800 x 600	1024 x 768
System	Windows 2000	Windows XP or Vista
Windows Media Player	Windows Media Player 9	Windows Media Player 9 or higher

## III. Software introduction





System Settings

System (selected) | Setting

Language Support  
Language: English

Mail Server  
SMTP:   
E-mail:   
Account:   
Password:  Test

Startup Options  
☐ Start Detecting  
☐ Start Web Server

Recurring Recording  
☐ Enable 10 Recurring Ratio (%)

Storage Location  
Record: C:\Program Files\WirelessCamera... Default  
Snapshot: C:\Program Files\WirelessCamera... Default

Web Service  
IP Address: 192.168.1.9  
Web Server  
Port: 7788  
Account: user  
Password:

MMS Server  
Port: 8080  
Channel: Disable  
Web Address:  (S)  
MMS Address:  (M)  
Web Address:  (http://192.168.1.9:7788/download.htm) (H)

Free disk space 611005.96(MB), Total Space 628634.92(MB)

Free disk space 611005.96(MB), Total Space 628634.92(MB)

Confirm Apply Cancel

system basic setting

only english

set mail server for mail alarm send you email once there is a motion detection

start these functions when start

adjust the free space ratio, rewrite when the free space is lower than setting

setting recording storage location

setting taking photo storage location

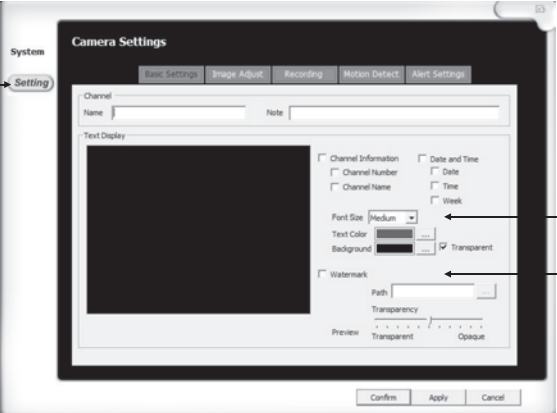
show your computer IP address auto

open this default port 7788 in your router, then when you visit this port of router from internet, you can see the picture

you can set password to protect your information

MMS port

default is disable, but is it optional, when it is enable, you can type the MMS address to see the picture



System | Camera Settings

Basic Settings | Image Adjust | Recording | Motion Detect | Alert Settings

Channel  
Name:  Note:

Text Display  
☐ Channel Information  
☐ Channel Number  
☐ Channel Name  
☐ Date and Time  
☐ Date  
☐ Time  
☐ Week  
Font Size: Medium  
Text Color:   
Background:  ☒ Transparent  
☐ Watermark  
Path:   
Transparency:   
Preview: Transparent Opaque

Confirm Apply Cancel

select setting Camera Setting

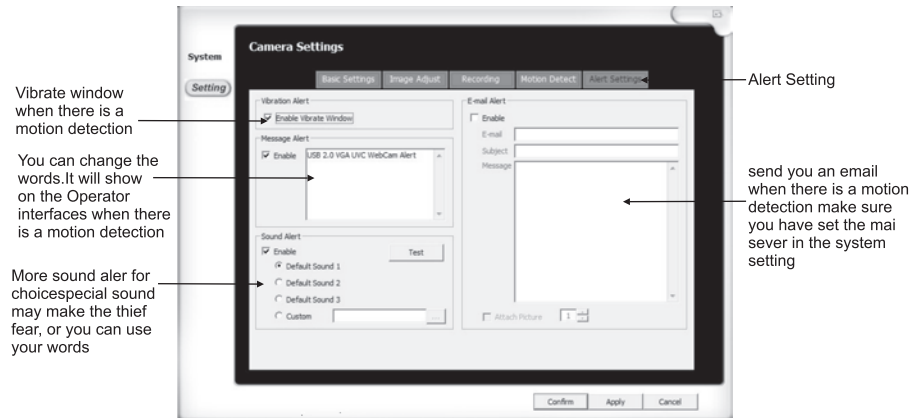
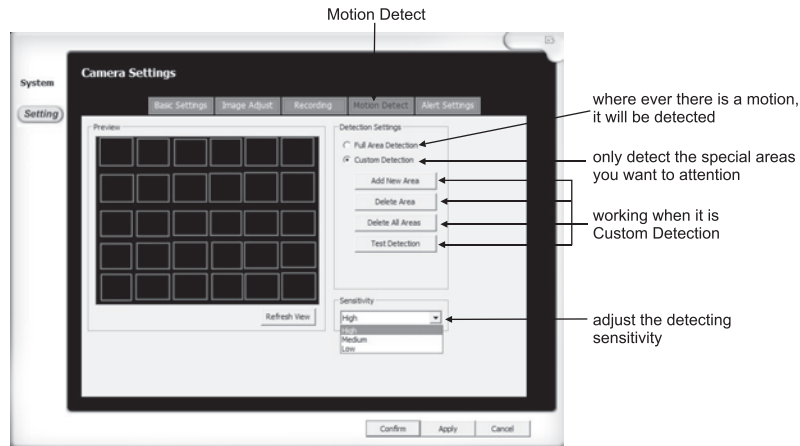
Show the words on the picture

Show water mark on the picture



If the camera is not installed for good direction, adjust the picture easily by this way, no need to go to adjust the cameras





Install the software before plug in the USB receiver

How to match the camera to the receiver?

Press the "code" button when the light is flashing, choose the camera channel you want on the software operator window

### IV. FAQ:

Q: Can not find the device after installed software.

A: After you installed the software, when you plug in the USB receiver, it shows found unknown new device, please update the drive from device manager or you can do according the guider.

Q: How to set network function?

A: Setting network, when you press web server, you can see IP address, and port 7788, please also open this port in your router, then when you visit your router IP address:7788, you can see the pictures, e.g.: if your router IP address is 202.96.134.33, then you should visit <http://202.96.134.33:7788>

Q: Why can not we use some functions or buttons?

A: Some functions only work when it is one-channel view, and you should be out "detecting" .

Q: Why can not we go to set and playback?

A: Please leave "detecting".

Q: Why can not we use remote control ( PTZ)?

A: It only works when it is one-channel view, and your cameras do not support this function.

Q: Does it support DDNS?

A: Yes, it supports DDNS, and you can also visit by the ip address or DNS address.

Q: Why does it not recording after press "detecting"?

A: Please check the recording setting, if it is recording all the time, it should work, but if this recording by motion detection, it will only work when there is a motion.

Q: Why can not see remote view?

A: Please check the network setting and IP address.

Q: What is the meaning of "Can not connect to following channel(s)"?

A: Please check the connect status.

Q: What is the meaning of "Can not import to the following channel"?

A: Please check the IP address, maybe your IP address is the same as some other computer.

Q: What is the meaning of "No buffer space error"?

A: The space of hard drive is not enough.

Q: What is the meaning of "Virtual RAM insufficient"?

A: Please up your RAM to be 1G.

## 2.4G Digital Wireless Kit

Q: Why no sound when play video?

A: If the video is 4CH quad picture, there is no sound, only when it is one channel and single picture, there is sound.

**Note:** Please make the Stereo Mix (volume recording setting) is on when you record.

### V. What is in the box?

Receiver ..... 1PC  
Camera ..... 1PC (Optional)  
Stand of the camera ..... (Optional)  
Antenna ..... 2PCS (Optional)  
Power adapter (5V/800mA) ..... 1PC (Optional)  
Driver CD ..... 1PC  
User Manual ..... 1PC



## Warranty card

This card is the important evidence to receive our service, please keep it well.

- ① When used normally, the following services can be offered:
  - A. Replacement for functional disorder within 3 months.
  - B. Repair free of charge for functional disorder within 1 year.
  - C. Service for all the life( only charge material cost and freight if the warranty date expires.)
- ② The following conditions are excluded for warranty service ( repairable if needed, but will charge material cost and freight.)
  - A. Malfunctions or damages by mistaken installation or using the products exceeding the limited operating conditions.
  - B. Malfunctions or damages by self disassembled or repair and any other misuse.
  - C. Spare parts missed, artificial damages
  - D. Unmatched products.
- ③ Repair cycle Excluding the shipping dates, the Quality Department will submit the examine report in one day on receipt of the products, the products on the quantity under 50sets will be repaired in 3 days after customers signed back the test report.

**Product name:** \_\_\_\_\_ **Purchase date:** \_\_\_\_\_

**User's name:** \_\_\_\_\_ **Invoice No.:** \_\_\_\_\_

**User's address:** \_\_\_\_\_ **Distributor:** \_\_\_\_\_

**Tel:** \_\_\_\_\_ **Contact person:** \_\_\_\_\_

**Zip code:** \_\_\_\_\_ **Tel:** \_\_\_\_\_

**Dealer:( Valid by sealed)**