



## Nissan Skyline GTR R32 – 34 RB26DETT

### Installation Instruction



#### Note

**Picture may be different than the actual product !**

**It is a reference guide only !**



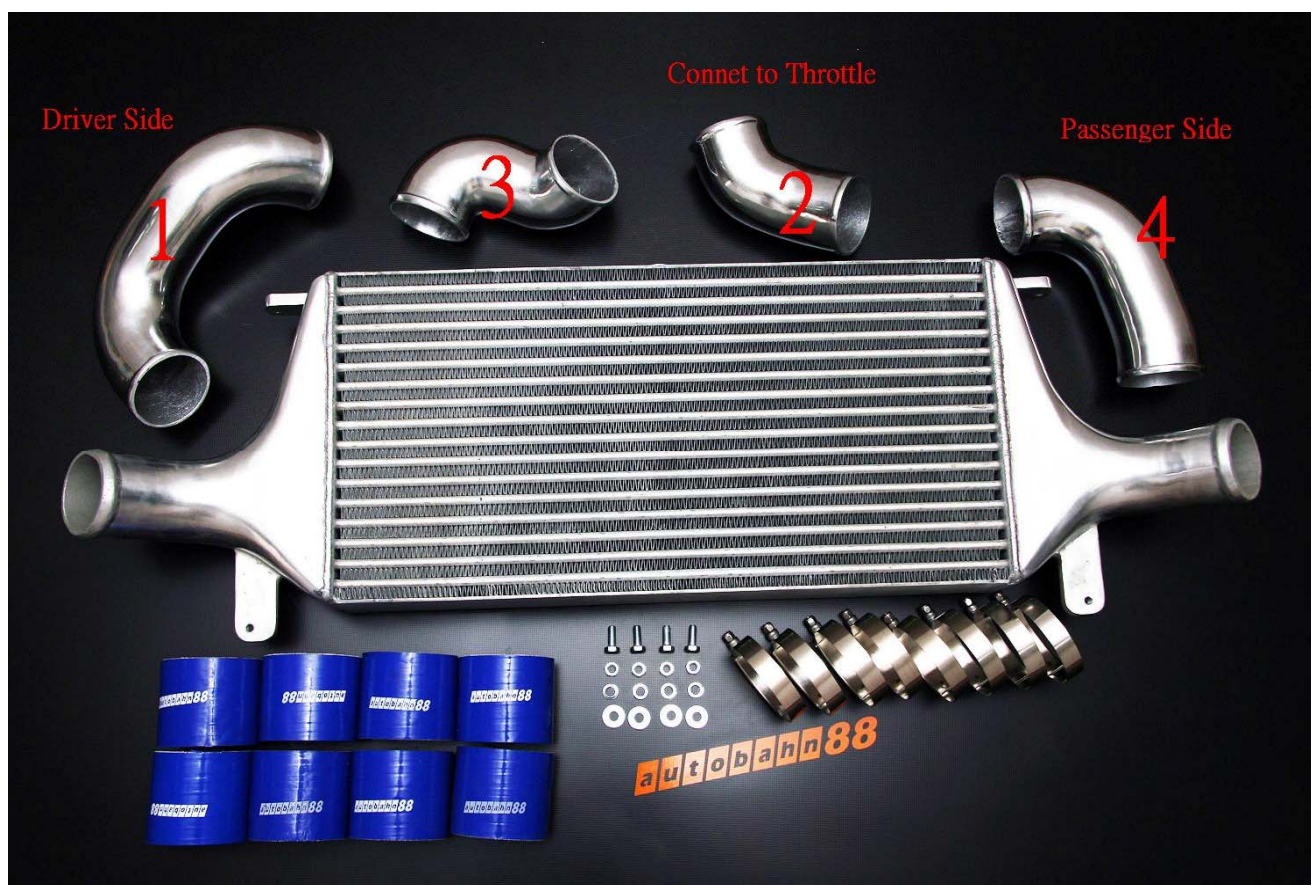
We are appreciating you to purchase **autobahn88** FMIC KIT.

Please read the instruction below:

- Designed for Nissan Skyline **GTR R32-34 RB26DETT**
- Designed for the stock turbo.
- Require the special tools and bodywork.
- Recommend installing the fuel injection and the **autobahn88** spare fuel tank.
- Watch the pipes before you install.
- Please wait for the engine bay cool down before you install.
- Please disconnect the factory battery before you install.
- Install it by experience garage.
- We are not responsible for any damages, or injuries incurred from the installation process.
- **It is an optional procedure to remove the stock air box with power flow unit.**
- **Due to the intercooler size, front bumper may need to trim a bit to fit on**

The rubber hoses may harden in time due to temperature and other factors. Periodically check the condition of the rubber hoses and replace the **autobahn88** silicone hoses if necessary.





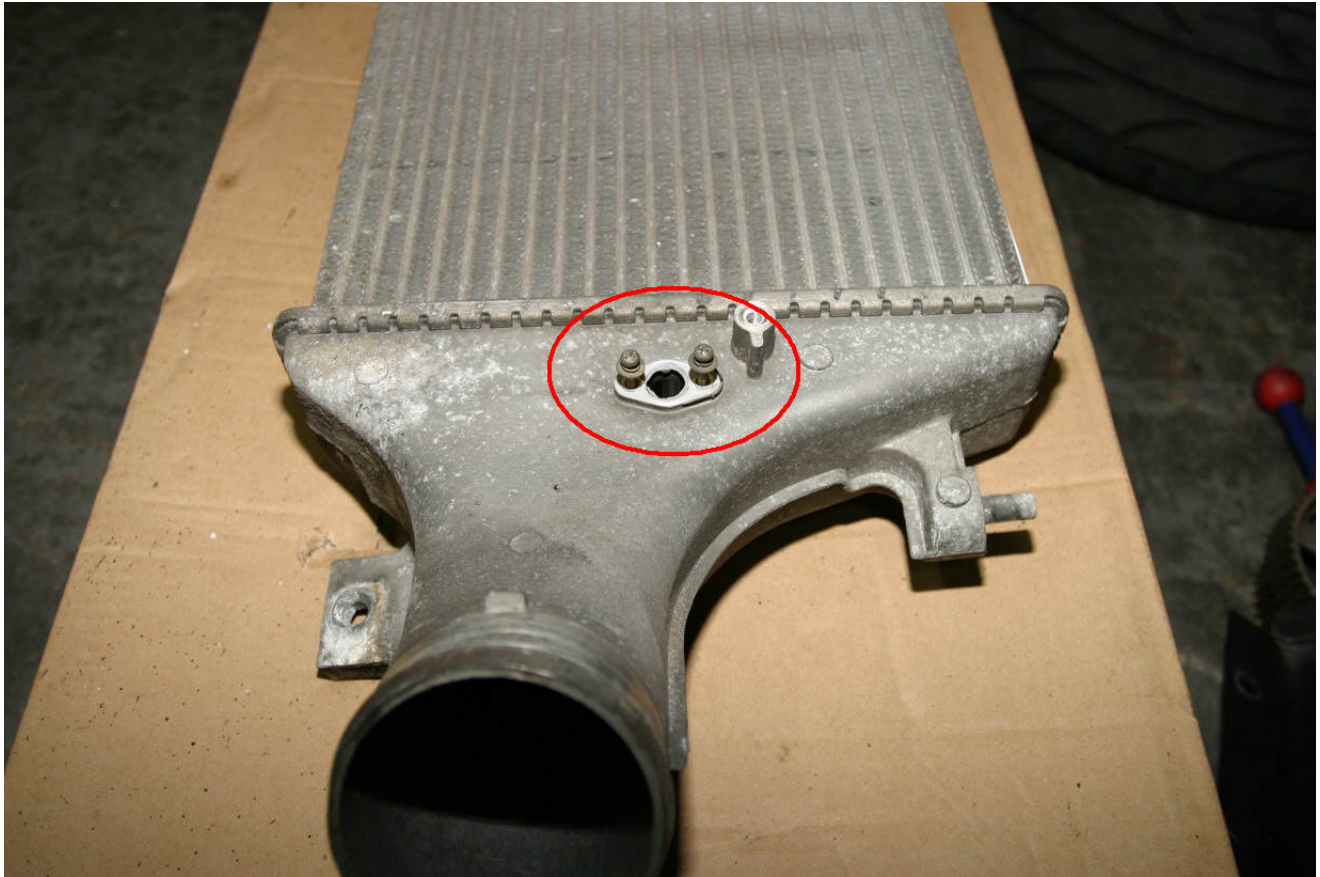
	Description	Qty
●	<b>autobahn88</b> intercooler	1
●	<b>autobahn88</b> Pipe Kit	4
●	80mm straight hose	8
●	80mm clamp	16

- Remove the battery, front bumper, metal bumper support, factory intercooler, intercooler pipe, radiator and the radiator bracket.





**1. Cut the hole, which is same size of the sensor, on the Autobahn88 GTR Intercooler**



**2. Put the sensor to the Autobahn88 GTR Intercooler.**



**3. Connect the pipe “2” to the throttle.**



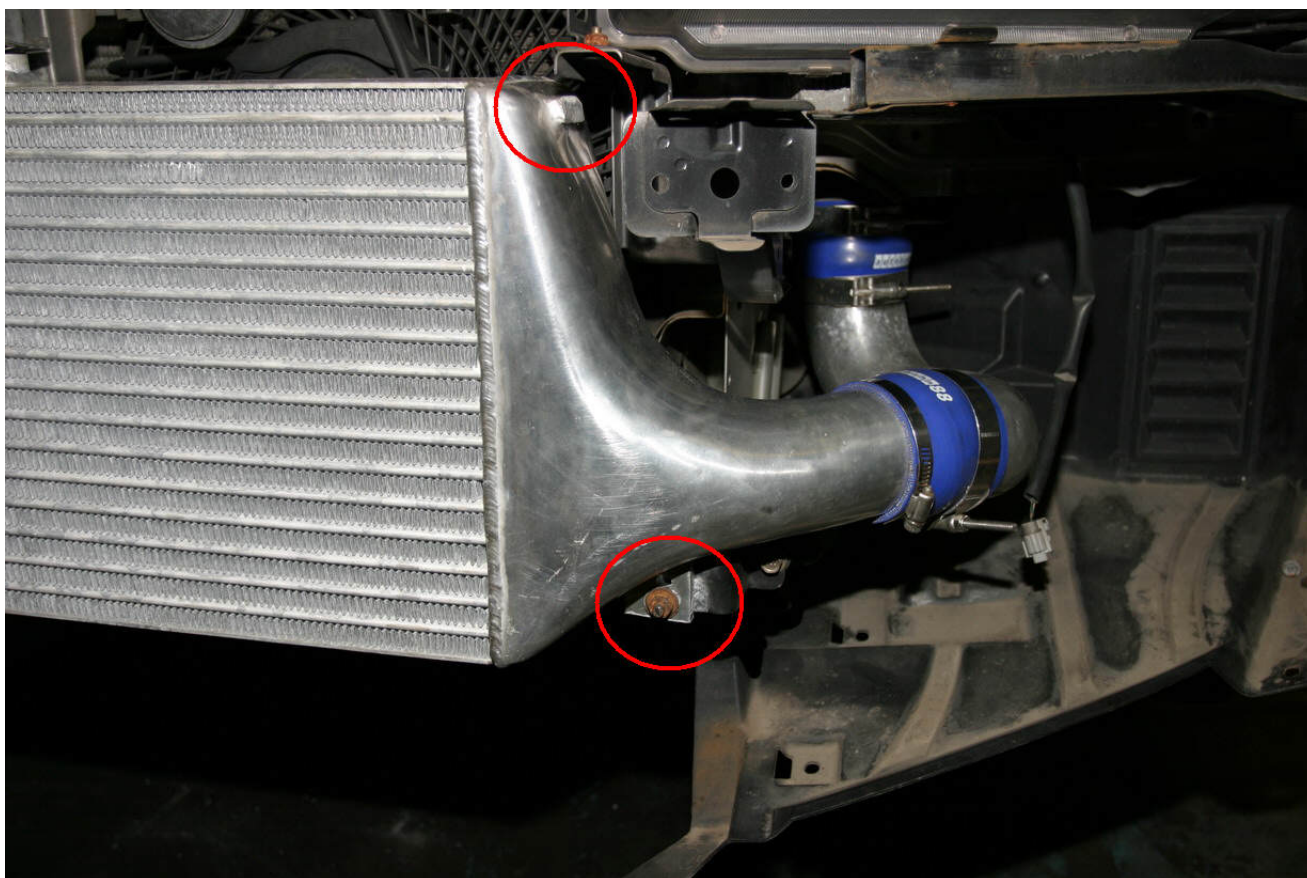
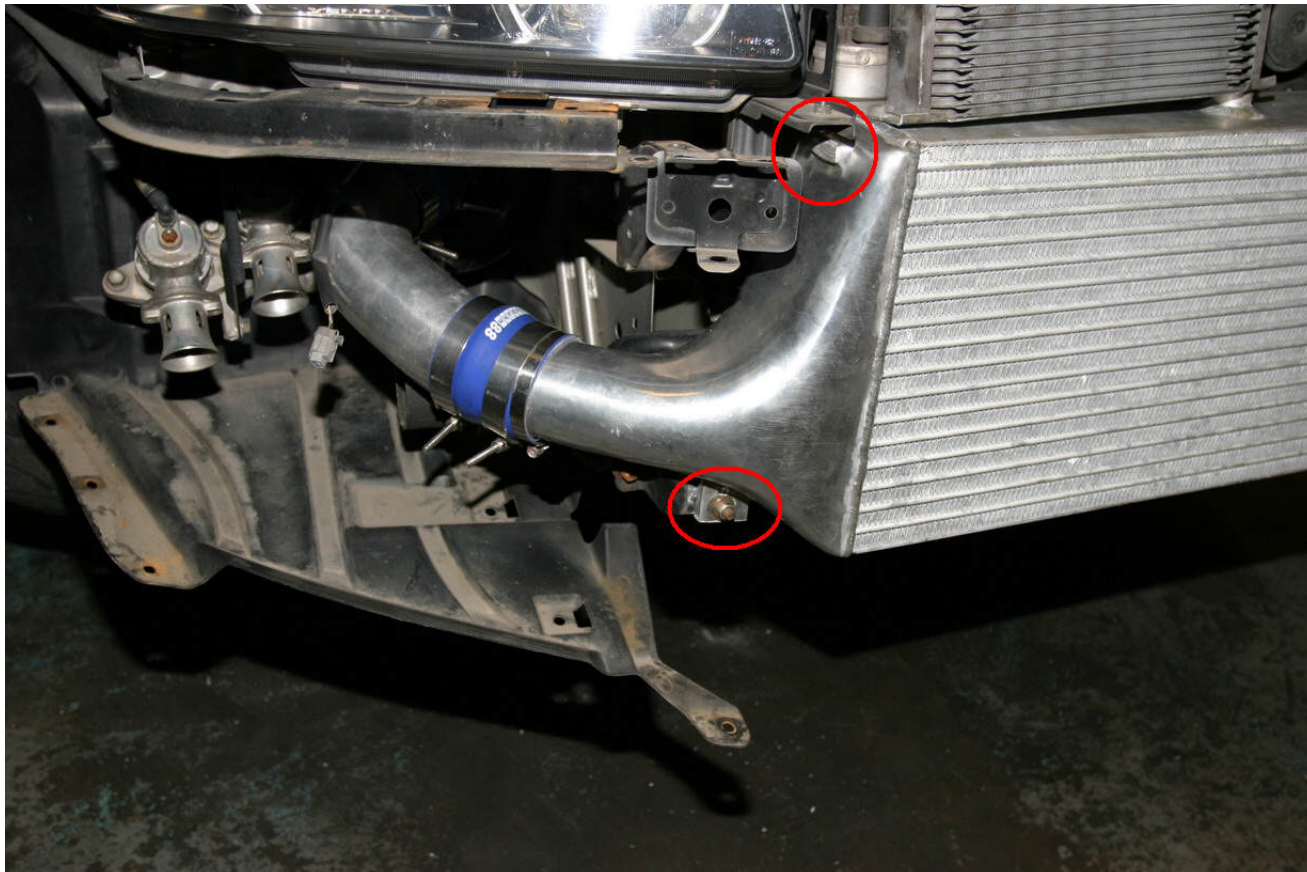
**4. Install the pipe “3”**





5. Connect the Pipe “4” and Pipe “1” to the Autobahn88 GTR Intercooler.

6. Cut the mountings of the Autonbahn88 GTR Intercooler and Cut the hole on the bottom mounting.  
Make sure the intercooler is balance.





7. The front bumper may need to trim a bit to allow max. exposure of the intercooler.



- END OF INSTALLATION -

- THANKS FOR USING **autobahn88** PRODUCT -



Be sure check the following points before driving the vehicle.

1. All rubber hose connections.
2. All nuts and bolts have been securely tightened.
3. All connectors for the lights, side markers and horn have been reconnected.
4. Lights, side markers, and horn are operational.
5. Check for tools that may be in the engine bay.
6. All connector connections.
7. Unusual noises from the engine.
8. Check for proper engine rev and boost.

### Troubleshooting:

Problem	Possible Reason
<ul style="list-style-type: none"> <li>● Engine will not start.</li> <li>● Engine RPM is instable.</li> <li>● Engine stops immediately after being started.</li> </ul>	<ul style="list-style-type: none"> <li>● The air flow meter connector may bit be connected.</li> <li>● A loose clamp or hose.</li> <li>● Foreign objects somewhere in the intercooler pipes.</li> </ul>
<ul style="list-style-type: none"> <li>● Unusual noise</li> <li>● Rough operation</li> </ul>	<ul style="list-style-type: none"> <li>● Excessive stress on one of the components of the kit. Reposition intercooler.</li> <li>● Metal is hitting metal. Reposition core.</li> <li>● Loose bolts and clamps.</li> <li>● The bumper and under cover has not been reinstalled properly.</li> <li>● Loose tools in the engine compartment.</li> <li>● Sound may be coming from a location other than the intercooler and air filter.</li> </ul>
<ul style="list-style-type: none"> <li>● Cannot boost.</li> <li>● Will not accelerate.</li> </ul>	<ul style="list-style-type: none"> <li>● Intercooler pipe has come off.</li> <li>● Hose clamp has not been tightened.</li> <li>● Foreign object in the intercooler pipes.</li> <li>● Core may be damaged and leaking air.</li> <li>● Other problem with motor other and core and air filter.</li> </ul>
<ul style="list-style-type: none"> <li>● Vehicle detonates</li> <li>● Fuel cut</li> </ul>	<ul style="list-style-type: none"> <li>● Vehicle is running lean. Consult your garage.</li> </ul>