



**HYBRID DEVELOPMENT INTERNATIONAL
RACING INTERCOOLER KIT
INSTALLATION MENU**

**SUBARU IMPREZA WRX version 7 and version 8
GDB, GDA**

Front mount intercooler kit Ver.II
installation guide



Please read through before continue

This installation guide serves as guide only!! There could be other different chassis layout or arrangements. Some of the parts may not be necessarily to be cut or modified as instructed. You may do modification at your own risk but are encourage to check your local state regulations before conducting any modifications.

Please read through all the instruction and practice all precaution in all aspect of safety and every step prior and during the installation. This installation menu is purely for HYBRID DEVELOPMENT INTERNATIONAL RACING INTERCOOLER KIT and is used as guide only. As different vehicles in different countries may have different specifications and component layout. Therefore, it is important to make sure the connection is properly done by authorized personals or dealers.

Warning

- Installation should only be carried out by authorized dealer or agent only.
- Check and clean all open area for foreign object inside.
- Avoiding water, liquid or fluid during and post installation.
- **This product is off road and race only not for public road.**
- Never adjust the fitments when the car is moving or on public road ,doing so is dangerous to yourselves and others.
- Make sure there is adequate ventilation if you are installing or setting it in door.

LIMITED WARRANTY

Hybrid Development international pty ltd will warranty for the period of 1 year from original purchase against all defects in workmanship and materials. Hybrid Development international pty ltd is not responsible for expenses incurred for labor, personal injury or inconvenience. Hybrid Development international pty ltd sole responsibility is to offer a replacement product or to repair the damaged product. Hybrid Development international pty ltd cannot warranty products damaged by improper installation. All other products sold by Hybrid Development international pty ltd are warranted by the original manufactures and is not the responsibility of Hybrid Development international pty ltd
All products are for racing use only.

All rights reserved.

For more information please visit www.hybrid-power.com or contact tech@hybrid-power.com



Remove all the standard intercooler and all brackets



Plug or block the stand blow off valve return port!!



Remove the head lights and front bumper bar.



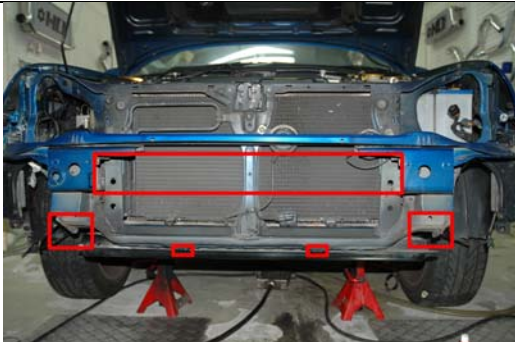
Remove standard breather passover pipe from the standard intercooler.



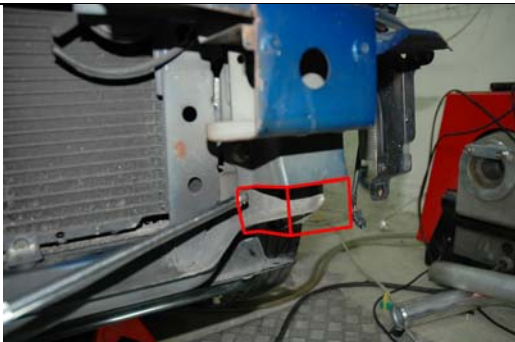
Reinstall the breather pipe.



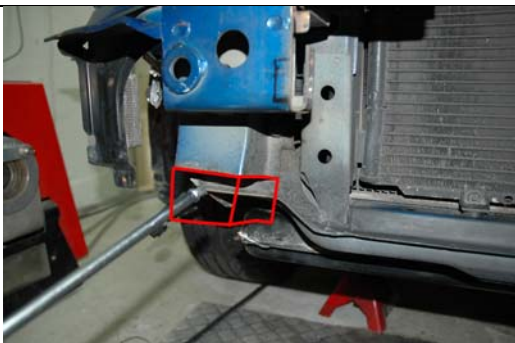
Remove and trim the splash trade.
Reinstall it if needed



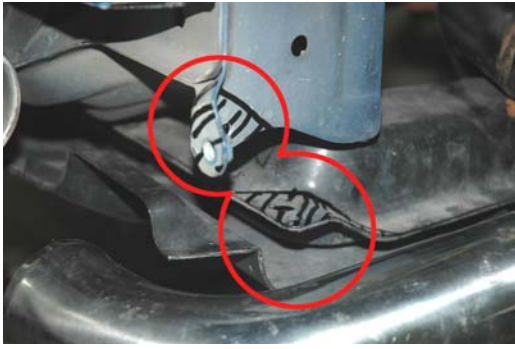
Trim the front reinforcement as shown.



Are need to be trimmed close up1



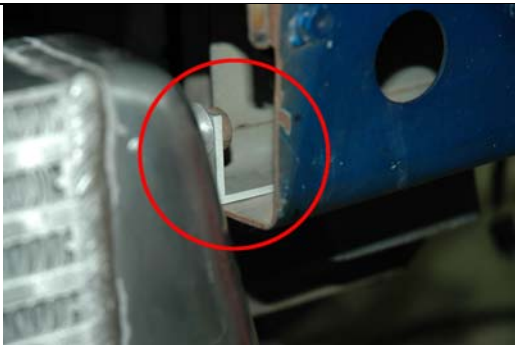
Are need to be trimmed close up2



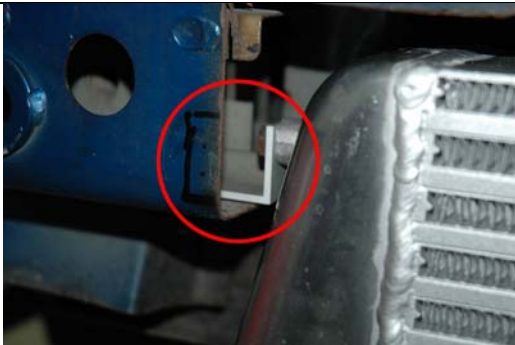
Trim off the splash guard holder brackets



Install the HDi X 1 intercooler and the supplied lower bracket.



Install top right intercooler bracket as shown.



Install top left intercooler bracket as shown.



Install supplied screws for the intercooler.



Tighten all intercooler screws.



Remove all the air filter box and the resonant box.



Remove the air flow meter sensor (**care must be taken to remove the air flow sensor, don't touch the sensor part and don't drop it!!**).



Reinstall it with the standard O ring into the HDI A/F sensor adopter.



Enlarge the hole as shown for the intercooler pipe (some version may not need to be enlarged)



Install cold air intake pipe as shown and the air flow meter adapter as shown (please make sure the correct sensor direction)



Install top intercooler pipe.








Install cold air filter pipe and lower left hand side intercooler cooler pip.



Install supplied super clamps as directed, keep them loose and tighten them all at the end of the installation.



Install top intercooler hot pipe as show.

	<p>Locate the outlet of the hot pipe under the car.</p>
	<p>Connect the hot pipe with the under pipe. (At this point do not tighten all the clamps until the final position are reached)</p>
	<p>Adjust the under pipe to the right direction. (At this point do not tighten all the clamps until the final position are reached)</p>
	<p>Connect the under pipe with lower passover pipe. (At this point do not tighten all the clamps until the final position are reached)</p>
	<p>Adjust the passover pipe and the underpipe as high as possible. (At this point do not tighten all the clamps until the final position are reached)</p>



Another view of the passover pipe connection.



Connect the right side lower intercooler pipe to between the passover pipe and the intercooler.
(Now do the final adjustment make sure they are free from rubbing, knocking ,enough ground clearance and tighten all the hose clamps.)



All pipes are connected view.



Trim the front bumper bar for fitting intercooler.



Reinstall the front bumper bar.



Install a quality after market blow off valve , reinstall all the head light and other standard part. Ready for test drive.



Finished view on version7



Finished view on version8

End