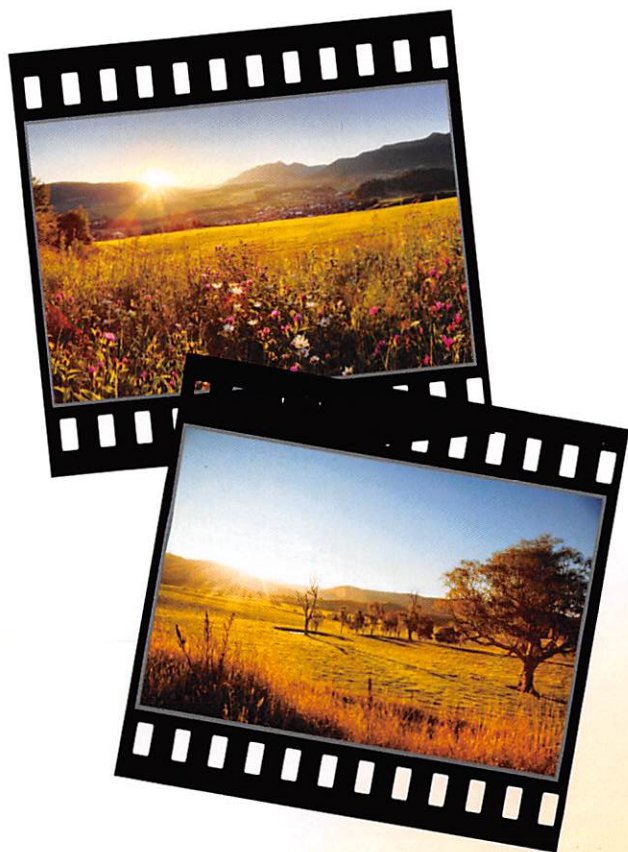


SCOUT OUR LOCATIONS!



Whether it's your first time shooting your project in Hemet or your tenth, you will find a very film-friendly atmosphere.

The City of Hemet is an advocate for all kinds of productions, from major feature films and television series to commercials, music videos, documentaries and student films.

With our Film Incentive Program, you can enjoy great features such as concierge services, no permit fees, and hotel tax reimbursements.

Come see our great locations for yourself!

CITY OF HEMET

445 E. Florida Ave.
Hemet, CA 92543

951.765.2301 ♦ 951.765.3785
filminhemet@cityofhemet.org
www.cityofhemet.org

CITY OF HEMET

FILM INCENTIVE PROGRAM



FILM IN HEMET

The City of Hemet, California in Western Riverside County is pleased to partner with the Inland Empire Film Commission and the Riverside County Office of Film to provide concierge services and incentives to film your next production in Hemet.

Hemet welcomes all location scouts and film industry representatives to come explore Hemet and discover the many great locations for film, TV, and media productions.

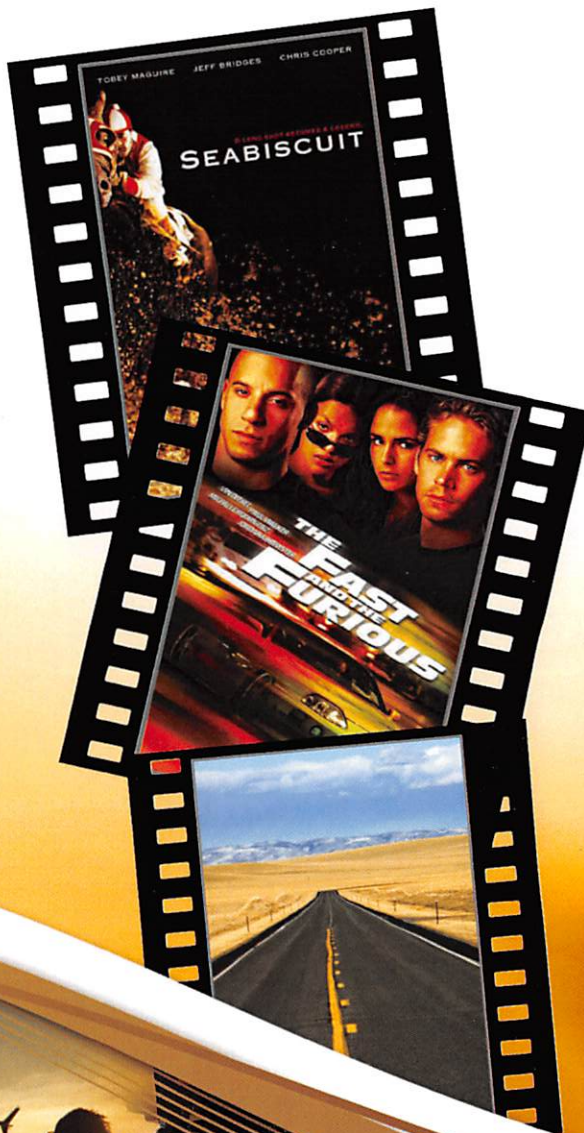
LOCATION INVENTORY

- ◆ Diamond Valley Lake
- ◆ Citrus Groves
- ◆ Historic Downtown
- ◆ Western Science Center
- ◆ The Stock Farm
- ◆ New Neighborhoods
- ◆ Tree Lines Streets
- ◆ City Hall, Police and Fire Stations
- ◆ Historic Theater
- ◆ Mall and Auto Mall
- ◆ And Much More

Contact the City of Hemet for a complete location listing with detailed information.

MOVIES FILMED IN HEMET

Hemet's great locations have been used in film since the 1930's. Most recently Seabiscuit and The Fast and Furious have been filmed in various Hemet city locations.



INCENTIVES

- ◆ No Permit Fees
- ◆ Expedited Processing (three business days or less)
- ◆ No charge to film on City-owned property or facilities
- ◆ Hotel Tax Reimbursement
- ◆ Single Point of Contact
- ◆ Coordination with IEFC
(Inland Empire Film Commission)
- ◆ Support from Riverside County Office of Film
- ◆ Great Locations
- ◆ Unique Settings
- ◆ Crew Support
- ◆ Concierge Service
- ◆ Unique Settings
- ◆ Great Locations

PARTNER AGENCIES

- ◆ Inland Empire Film Commission
- ◆ Riverside Film and TV Commission
- ◆ California Film Commission

Visit our website to receive our full list of interesting and unique locations and sites.

www.cityofhemet.org

CITY OF HEMET

445 E. Florida Ave. ◆ Hemet, CA 92543
951.765.2301 ◆ 951.765.3785



Site 1

California's greatest
southern reservoir
and scenic location.

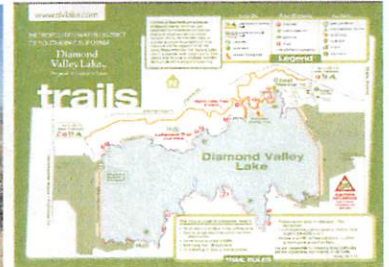
Over 800,000 acre
feet of fresh water
serving as reserve to
the Southern CA
water supply.

- Three Earthen Dams
- Boating & Fishing
- Boat Ramp & Dock
- Rugged Shoreline
- Steep, Winding Access Road
- Mountain Bike & Hiking Trail Network

Amazing Scenery
awaits you at DVL
in Hemet

FILM IN
HEMET

Lakes, Dams and Reservoirs Diamond Valley Lake



Hemet, California

Owner's Contact Information

Diamond Valley Lake Marina
2615 Angler Avenue
Hemet, CA 92545

(951) 926-7201 dvmarina.com

Additional Information

Inland Empire Film Commission
(909) 300-5648 filminlandempire.com

Riverside County Film & Television Office
(951) 955-2044 rcfilmtv.org

Provided by the City of Hemet, Department of Community Investment—Office of Economic Development

filminhemet@cityofhemet.org (951) 765-2308 cityofhemet.org

The City of Hemet believes the information contained herein is reliable, but does not warrant the availability, suitability or terms associated with these locations

Site 2

Breathtaking building and center for modern scenes, futuristic, unique and unusual.

Includes a Paleontology museum with interactive exhibits beautiful grounds, active dig site.

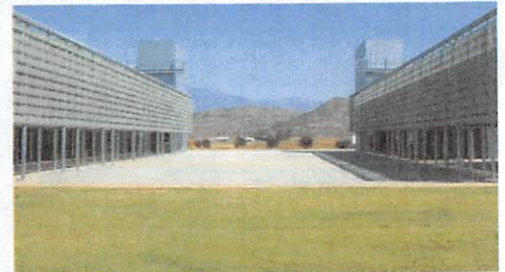
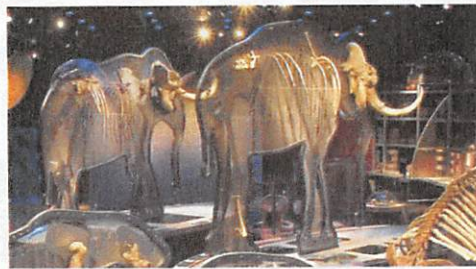
Premier charter school on site.

Meet
"Max the Mastadon"

Amazing Scenery
awaits you in
Hemet

FILM IN
HEMET

Modern Building, Campus Paleontology Museum Hemet Western Science Center



Hemet, California



Owner's Contact Information

Western Science Center
2345 Searl Parkway,
Hemet, CA 92545
(951) 791-0033
westerncentermuseum.org

Additional Information

Inland Empire Film Commission
(909) 300-5648 filminlandempire.com

Riverside County Film & Television Office
(951) 955-2044 rcfilmtv.org

Provided by the City of Hemet, Department of Community Investment—Office of Economic Development

filminhemet@cityofhemet.org (951) 765-2308 cityofhemet.org

The City of Hemet believes the information contained herein is reliable, but does not warrant the availability, suitability or terms associated with these locations

Site 3

Lovely small town museum located in historic train depot station (fully restored).

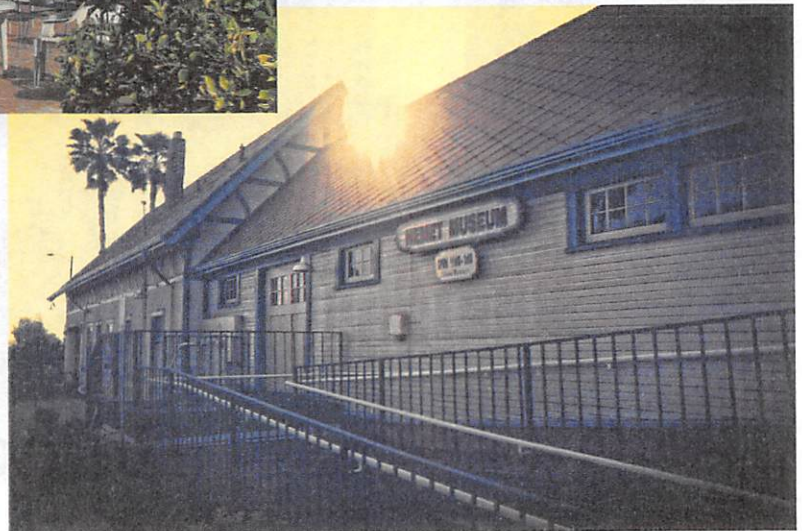
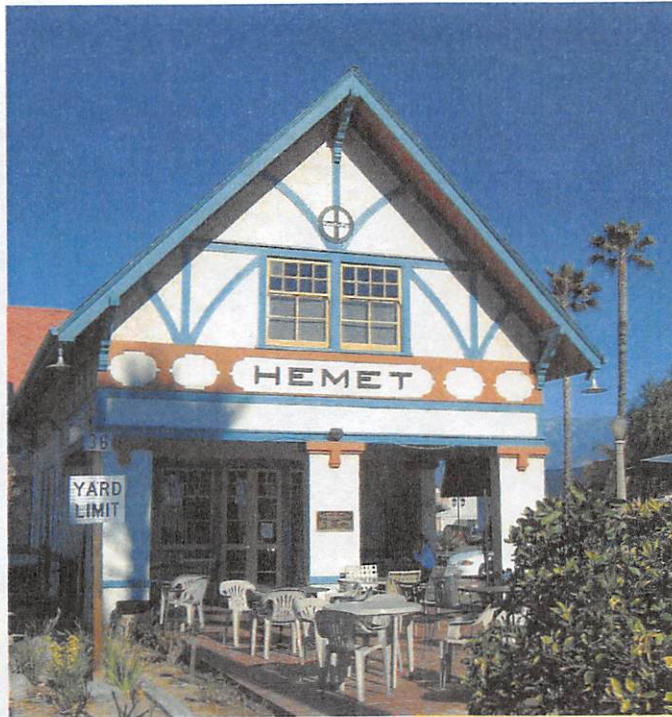
Central, downtown location.

Take a step back in time!

Amazing Scenery
awaits you in
Hemet

FILM IN
HEMET

History Museum & Train Station *Hemet History Museum*



Hemet, California



Owner's Contact Information

Hemet Museum
1001 W. Florida Ave.,
Hemet, CA 92543
(951) 929-4409
info@hemetmuseum.com

Additional Information

Inland Empire Film Commission
(909) 300-5648 filminlandempire.com

Riverside County Film & Television Office
(951) 955-2044 rcfilmtv.org

Provided by the City of Hemet, Department of Community Investment—Office of Economic Development

filminhemet@cityofhemet.org (951) 765-2308 cityofhemet.org

The City of Hemet believes the information contained herein is reliable, but does not warrant the availability, suitability or terms associated with these locations

Site 4

One of a kind
California outdoor
amphitheater in a
unique scenic setting.

Just over 1 hour from
Los Angeles or San
Diego

Film a play or concert
“live”.

Rare valley vistas and
gorgeous foothill
backdrop.

Amazing Scenery
awaits you at the
Ramona Bowl in
Hemet

FILM IN
HEMET

Outdoor Amphitheater & Spanish Hacienda

The Ramona Bowl Amphitheater



Hemet, California



Owner's Contact Information

Ramona Bowl
27400 Ramona Bowl Rd
Hemet, CA 92544
(951) 658-3111
ramonabowl.com

Additional Information

Inland Empire Film Commission
(909) 300-5648 filminlandempire.com

Riverside County Film & Television Office
(951) 955-2044 rcfilmtv.org

Provided by the City of Hemet, Department of Community Investment—Office of Economic Development

filminhemet@cityofhemet.org (951) 765-2308 cityofhemet.org

The City of Hemet believes the information contained herein is reliable, but does not warrant the availability, suitability or terms associated with these locations

Site 5

Authentic setting for
farm, ranch, barn,
stable or race track

Seabiscuit filmed
here.

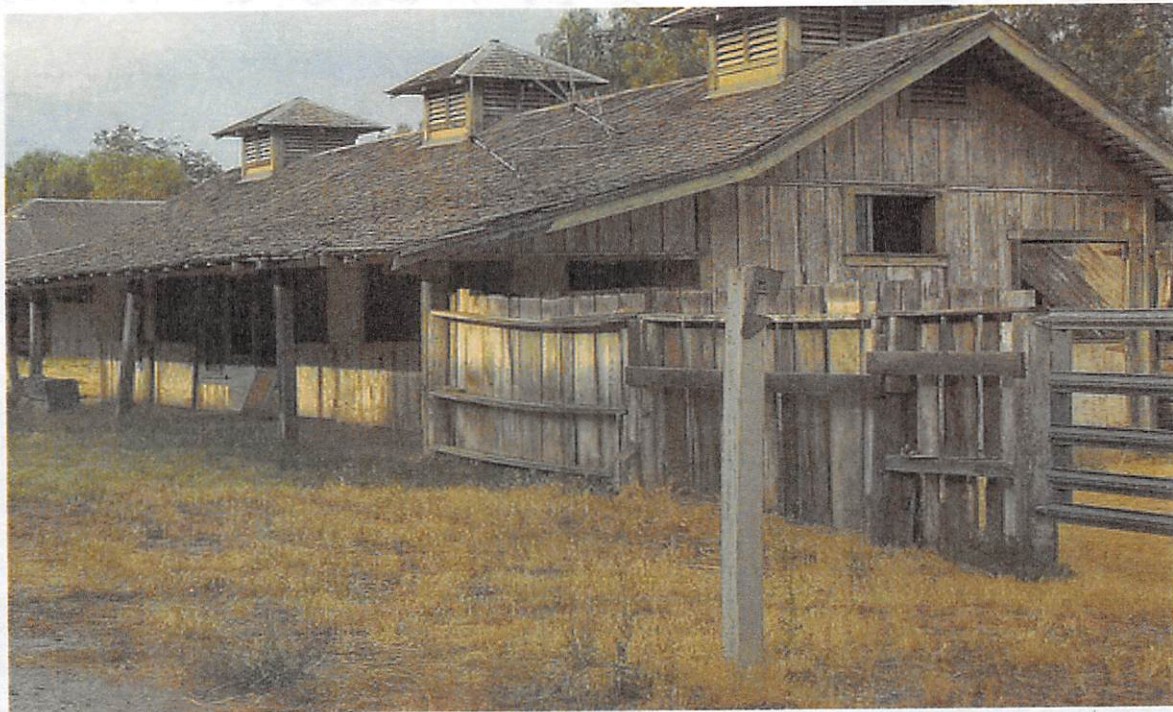
Sheryl Crow music
video shot here.

Be the next to film
here.

Amazing Scenery
awaits you in
Hemet

FILM IN
HEMET

Farm, Barn, Ranch, Stable HEMET STOCK FARM "Seabiscuit" filmed here



Hemet, California

Owner's Contact Information

Hemet Stock Farm
Scott Garrett
Devonshire and State Streets
Hemet, CA 92543
(951) 663-0005

Additional Information

Inland Empire Film Commission
(909) 300-5648 filminlandempire.com

Riverside County Film & Television Office
(951) 955-2044 rcfilmtv.org

Provided by the City of Hemet, Department of Community Investment—Office of Economic Development

filminhemet@cityofhemet.org

(951) 765-2308

cityofhemet.org

The City of Hemet believes the information contained herein is reliable, but does not warrant the availability, suitability or terms associated with these locations

Site 6

Beautiful gated
community.

Lifestyle residences
and amenities.

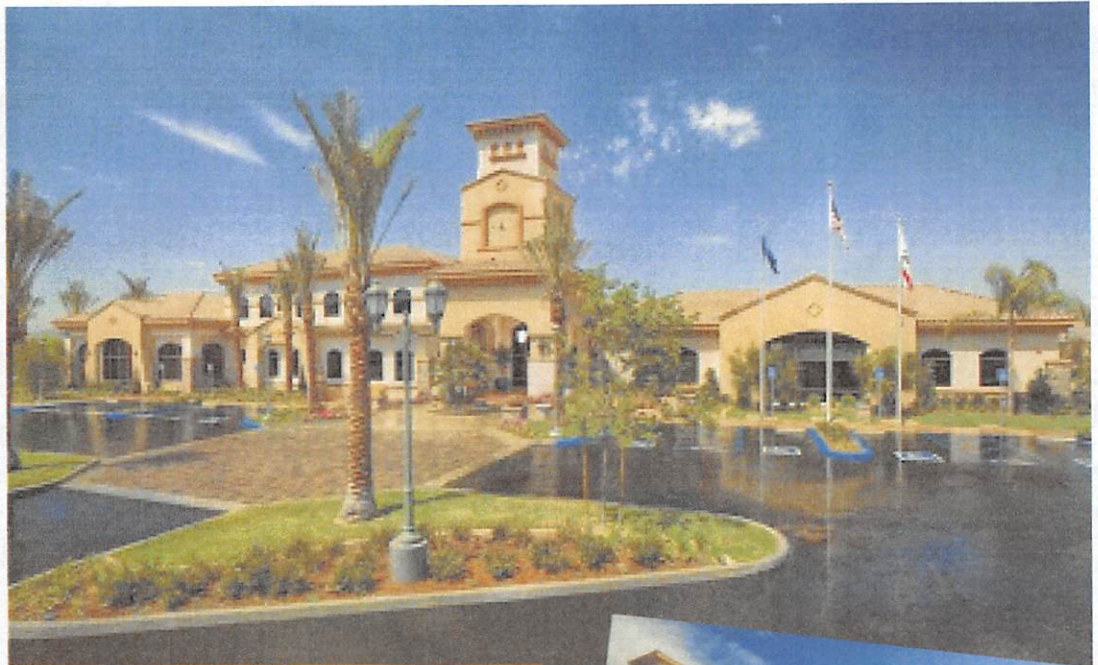
California living at
its' finest.

Younger, active
Seniors available

Amazing Scenery
awaits you in
Hemet

FILM IN
HEMET

Upscale Community, Clubhouse, & Active Seniors *Del Webb Community*



Hemet, California

Owner's Contact Information

Del Webb
1640 Paseo Diamante
Hemet, CA 92545
(866) 765-3723

Additional Information

Inland Empire Film Commission
(909) 300-5648 filminlandempire.com

Riverside County Film & Television Office
(951) 955-2044 rcfilmtv.org



Provided by the City of Hemet, Department of Community Investment—Office of Economic Development

filminhemet@cityofhemet.org (951) 765-2308 cityofhemet.org

The City of Hemet believes the information contained herein is reliable, but does not warrant the availability, suitability or terms associated with these locations

Site 7

Abandoned building

Former packing shed

Authentic settings
for old buildings &
warehouse scenes

Available for demoli-
tion and destruction

Featuring "creepy
basement"

Ample open space

Amazing Scenery
awaits you in
Hemet

FILM IN
HEMET

Old Buildings, Warehouse, Industrial Scenes **HEMET POTATO SHED**



Hemet, California

Owner's Contact Information

Hemet Potato Shed
City of Hemet
John Jansons
(951) 765-2308
jjansons@cityofhemet.org

Additional Information

Inland Empire Film Commission
(909) 300-5648 filminlandempire.com

Riverside County Film & Television Office
(951) 955-2044 rcfilmtv.org

Provided by the City of Hemet, Department of Community Investment—Office of Economic Development

filminhemet@cityofhemet.org (951) 765-2308 cityofhemet.org

The City of Hemet believes the information contained herein is reliable, but does not warrant the availability, suitability or terms associated with these locations

Site 8

Small town USA

Quaint main street

Historic district

Independent
merchants

Pedestrian friendly

Amazing Scenery
awaits you in
Hemet

FILM IN
HEMET

Small town, quaint scenery, historic downtown district *Hemet, CA*



Hemet, California

Owner's Contact Information

City of Hemet
John Jansons
(951) 765-2308
jjansons@cityofhemet.org

Additional Information

Inland Empire Film Commission
(909) 300-5648 film inlandempire.com

Riverside County Film & Television Office
(951) 955-2044 rcfilmtv.org

Provided by the City of Hemet, Department of Community Investment—Office of Economic Development

filminhemet@cityofhemet.org (951) 765-2308 cityofhemet.org

The City of Hemet believes the information contained herein is reliable, but does not warrant the availability, suitability or terms associated with these locations

Site 9

Built in 1921 using
concrete block walls.

Single screen nostalgia

2nd story projection
mezzanine

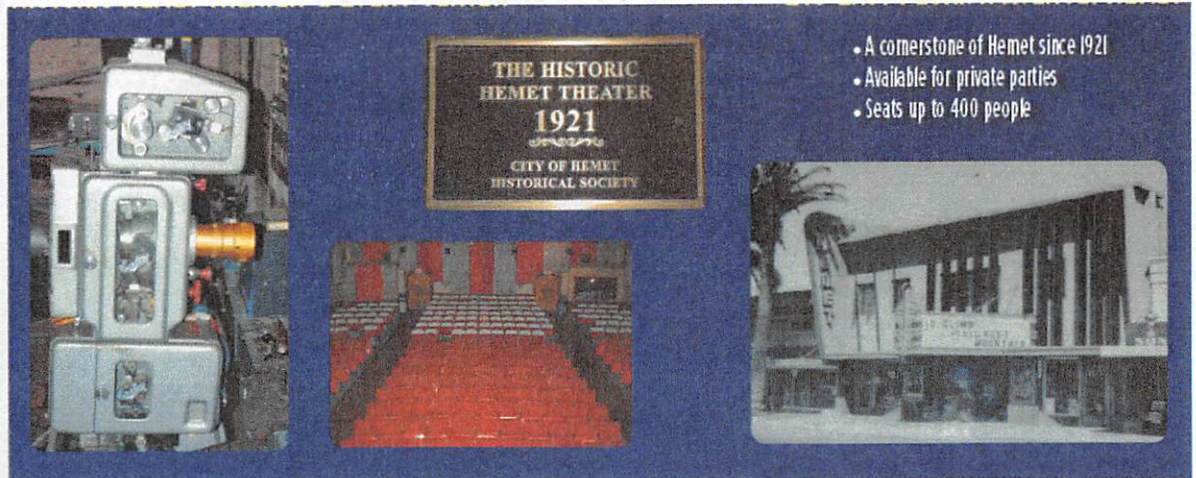
Proscenium

Located in the heart of
downtown Hemet.

Amazing Scenery
awaits you in Hemet

FILM IN
HEMET

Hemet Theater Historic Movie Theater



Hemet, California

Owner's Contact Information

Patricia Yepremian
Florida Avenue/Harvard Street
(951) 368-8850

Additional Information

Inland Empire Film Commission
(909) 300-5648 filminlandempire.com

Riverside County Film & Television Office
(951) 955-2044 rcfilmtv.org

Provided by the City of Hemet, Department of Community Investment—Office of Economic Development

filminhemet@cityofhemet.org (951) 765-2308 cityofhemet.org

The City of Hemet believes the information contained herein is reliable, but does not warrant the availability, suitability or terms associated with these locations

Site 10

Childrens inter-active
learning center

- Small sized props
- Doctors office
- Trash truck
- Dig for bones
- Police Car
- Fire Truck
- Bank teller

Fun for all ages

Film day care scenes

Amazing Scenery
awaits you in
Hemet

FILM IN
HEMET

Kids museum, interactive learning center
and children's arts & crafts

Fingerprints Youth Museum



Hemet, California

Owner's Contact Information

Fingerprints Youth Museum
123 S. Carmalita Street
Hemet, CA 92543
(951) 765-1223
fingerprintsmuseum.com

Additional Information

Inland Empire Film Commission
(909) 300-5648 filminlandempire.com

Riverside County Film & Television Office
(951) 955-2044 refilmtv.org

Provided by the City of Hemet, Department of Community Investment—Office of Economic Development

filminhemet@cityofhemet.org (951) 765-2308 cityofhemet.org

The City of Hemet believes the information contained herein is reliable, but does not warrant the availability, suitability or terms associated with these locations

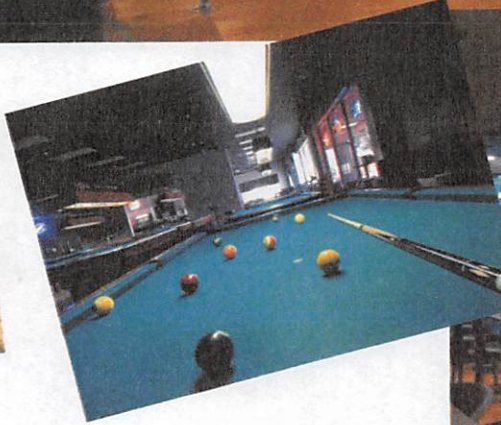
Site 11

- 20 Pool tables
- Tournaments
- Electronic Darts
- Large Restaurant
- Sports atmosphere
- Open floor plan
- Clean & well lit
- Sports bar

Amazing Scenery
awaits you in Hemet

FILM IN
HEMET

Local Pool Hall & Pub, Restaurant and Sports Bar *"Shooters"*



Hemet, California

Owner's Contact Information

Shooter's Sports Bar & Grill
121 E. Florida Ave.
Hemet, CA 92543
(951) 929-2223

Additional Information

Inland Empire Film Commission
(909) 300-5648 filminlandempire.com

Riverside County Film & Television Office
(951) 955-2044 rcfilmtv.org

Provided by the City of Hemet, Department of Community Investment—Office of Economic Development

filminhemet@cityofhemet.org (951) 765-2308 cityofhemet.org

The City of Hemet believes the information contained herein is reliable, but does not warrant the availability, suitability or terms associated with these locations

Site 12

Wilderness park

Nature preserve

Mountain setting

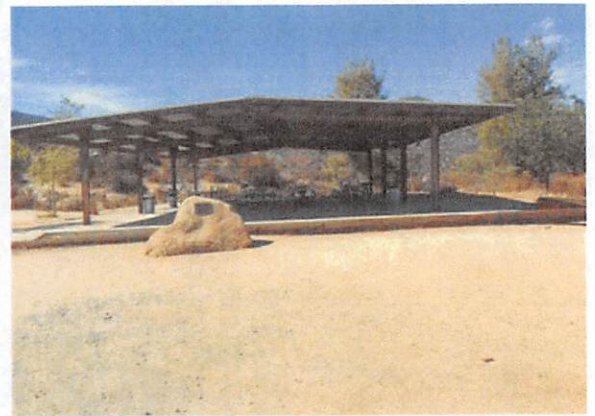
Hiking & biking
scenes

483 acres located in
the Santa Rosa Hills
provides an excellent
view of the San
Jacinto Valley

Amazing Scenery
awaits you in
Hemet

FILM IN
HEMET

Mountain biking, hiking, Wilderness park **SIMPSON PARK**



Hemet, California

Owner's Contact Information

City of Hemet
John Jansons
(951) 765-2308
jjansons@cityofhemet.org

Additional Information

Inland Empire Film Commission
(909) 300-5648 filminlandempire.com

Riverside County Film & Television Office
(951) 955-2044 rcfilmtv.org

Provided by the City of Hemet, Department of Community Investment—Office of Economic Development

filminhemet@cityofhemet.org (951) 765-2308 cityofhemet.org

The City of Hemet believes the information contained herein is reliable, but does not warrant the availability, suitability or terms associated with these locations



One Stop Permitting Information for Photo and Film/Video Shoots

Welcome to the City of Hemet's Photo and Film/Video Permit Service. In collaboration with the Inland Empire Film Commission and the Riverside County Office of Film, we are pleased to assist you in the permitting process and look forward to helping you with this facet of your production. We value your business and will always do our best to accommodate the needs of your production while balancing those needs with the interests of our residents and community.

Anyone interested in doing a commercial photo or film/video shoot within the City of Hemet must first review the following rules and regulations before completing **the attached Photo and Film/Video Shoot Application**.

1. General Information

- The City of Hemet offers one stop photo and film/video permitting issuing the permit and coordinating as many internal logistics among City departments such as Police, Fire, and Public Works as possible.
- A photo and film/video shoot permit **is required** for any photo shoot or film/video production, using any private or public property within the City of Hemet's jurisdiction (city limits).
- A Permit is not required if **still** photography is taking place solely on private property.
- Due to security and special circumstances, all photo and film/video shoot requests for the Hemet Ryan Airport or on an Airport leaseholder's property are handled directly by the Riverside County Office of Film. Please contact them at 951-955-2044 or RCFilm-TV@rivcoeda.org. You will **not** need to complete the attached Photo and Film/Video Shoot Application as they have their own application, forms and permits.
- We understand the fast moving nature of production and will always endeavor to turn around permits as quickly as we can while still insuring that all permitting requirements are met. However, it is in your best interest to submit your application as early as possible whether your production is complex or not. This allows us sufficient time to clarify answers on your application; check availability of the location; and route your application to City staff who know about construction/maintenance projects, street/sidewalk closures, and other impacts in the area.
- We may also need time to schedule City personnel such as Hemet Police Department or Hemet Fire Department personnel to coordinate or oversee your production if necessary. This will also allow you sufficient time to obtain insurance and obtain any additional permits that might be required.



2. Permit Submission Timeframes

We endeavor to issue your permit within three business days following submittal of an application deemed complete. Your assistance in planning accordingly will provide you adequate time in advance to obtain the necessary information you will need to submit a complete application that the City can begin to review and process toward permit issuance.

Examples of industry suggested time frames include:

STILL PHOTOGRAPHY/DOCUMENTARY (crew size up to 30):

Submit complete application a minimum of 5 – 7 working days prior to production

FEATURE/TV/COMMERCIALS/AUTOMOBILE PHOTOGRAPHY/DOCUMENTARY (crew size up to 50):

Submit complete application a minimum of 20 working days prior to production

FEATURE/TV/COMMERCIALS/AUTOMOBILE PHOTOGRAPHY/DOCUMENTARY (crew size 51 – 100+):

Submit complete application a minimum of 30 working days prior to production

- Requests to have street closures or blocking of the public right-of-way may require you to submit a Street Closure Permit to the city for review by Public Works, Hemet Police Department, Hemet Fire Department and for coordination with Riverside County Sherriff and local ambulance providers.

* Note that this application ideally should be submitted at least 30 days in advance of the production though a shorter time frame may be possible.

- **Sufficient detail should be included on the application to avoid any misunderstandings and the possible suspension or revocation of your permit due to performance of acts not described in the application.**
- If the application is approved, a permit will be issued. A copy of the permit must be maintained at the filming or photo shoot location and presented upon demand to any City of Hemet or government official.
- It is the responsibility of the applicant to obtain any City permit and/or license or pay for any City personnel that may be required in addition to the Photo and Film/Video Shoot permit.
- Providing written notification to residents and businesses affected by a photo and film/video shoot is the sole responsibility of the production company. The written notification should provide information on the shoot such as the date, time and place and outline the impacts the shoot will have on them, such as street closures, limiting parking, noise, etc. The City's Film Permit Coordinator must receive and pre-approve this notification before it is distributed.



- It is the responsibility of the applicant to collect and dispose of any trash, recycling or debris generated by the production and restore public property (street, sidewalk, park, or building) to its original condition. Refuse service is only available through CR&R 951-
- The City may assess penalty fees if permit conditions are violated. Examples of violations include, but are not limited to, exceeding the permit time; unapproved stopping or blocking in the public right-of-way; parking in unauthorized areas; filming/photographing in unpermitted areas; exceeding the size and scope of permit; misrepresenting photo or filming activities; unauthorized use of weapons, pyrotechnics, special effects, hot work, welding; damage to City property.
- The right to revoke permission for use of public property at any time is retained by the City of Hemet. All activities must comply with City Municipal Code and permittee shall comply with requests from Hemet public safety personnel or other authorized City Officials in response to complaints. In the case of a major fire, Act of God or other emergency in which City staff must be pulled from the production site, photography and filming will cease until such time City staff are available again.
- The City shall receive either audio or visual credit in the production unless the City elects to waive such credit.



3. Insurance Requirements (Mandatory)

- Permits will not be issued without appropriate insurance coverage in effect.
- All photo and film/video shoots occurring on City property are required to submit a Certificate of Insurance prior to the first day of shooting. For shoots requiring NO closure of a sidewalk and/or NO partial or full closure of a street, please refer to **Category 1** below.

For shoots requiring a full closure of the sidewalk and/or a partial or full closure of a street, please refer to **Category 2** below.

Both categories must adhere to the requirements in the "Other Insurance Provisions" section. Note that the certificate of insurance should cover the entire time that you will be using City property including prep and/or strike if these activities fall outside of the production days.

- The insurance requirements may be waived on a case-by-case basis if a film/video shoot occurs completely on private property and does not use any City property or City-owned right-of-way.

CATEGORY 1 – MINIMUM SCOPE AND LIMIT OF INSURANCE

Coverage shall be at least as broad as:

1. **Commercial General Liability (CGL):** Insurance Services Office (ISO) Form CG 00 01 12 07 covering CGL on an "occurrence" basis, including products-completed operations, personal & advertising injury, with limits no less than **\$1,000,000** per occurrence. If a general aggregate limit applies, either the general aggregate limit shall apply separately to this project/location or the general aggregate limit shall be twice the required occurrence limit.
2. **Automobile Liability:** ISO Form Number CA 00 01 covering any auto (Code 1), or if Contractor has no owned autos, hired, (Code 8) and non-owned autos (Code 9), with limit no less than **\$1,000,000** per accident for bodily injury and property damage.
3. **Workers' Compensation:** as required by the State of California, with Statutory Limits, and Employer's Liability Insurance with limit of no less than **\$1,000,000** per accident for bodily injury or disease.

CATEGORY 2 – MINIMUM SCOPE AND LIMIT OF INSURANCE

Coverage shall be at least as broad as:

1. **Commercial General Liability (CGL):** Insurance Services Office (ISO) Form CG 00 01 12 07 covering CGL on an "occurrence" basis, including products-completed operations, personal & advertising injury, with limits no less than **\$1,000,000** per occurrence. If a general aggregate limit applies, either the general aggregate limit shall apply separately to this project/location or the general aggregate limit shall be twice the required occurrence limit.



2. **Automobile Liability:** ISO Form Number CA 00 01 covering any auto (Code 1), or if Contractor has no owned autos, hired, (Code 8) and non-owned autos (Code 9), with limit no less than **\$1,000,000** per accident for bodily injury and property damage.

3. **Workers' Compensation:** as required by the State of California, with Statutory Limits, and Employer's Liability Insurance with limit of no less than **\$1,000,000** per accident for bodily injury or disease.

OTHER INSURANCE PROVISIONS (applies to Category 1 and Category 2)

The insurance policies are to contain, or be endorsed to contain, the following provisions:

Additional Insured Status

The "City of Hemet, its officers, employees and agents" shall be covered as additional insured on the CGL policy with respect to liability arising out of work or operations performed by or on behalf of the permittee. General liability coverage can be provided in the form of an endorsement to the permittee's insurance at least as broad as ISO Form CG 20 10 11 85 or if not available, through the addition of both CG 20 10 and CG 20 37 if a later edition is used).

Primary Coverage

For any claims related to this contract, the Contractor's insurance coverage shall be primary insurance as respects the Entity, its officers, officials, employees, and volunteers. Any insurance or self-insurance maintained by the City, its officers, officials, employees, or volunteers shall be excess of the permittee's insurance and shall not contribute with it.

Notice of Cancellation

Each insurance policy required above shall provide that coverage shall not be canceled, except with notice to the City.

Waiver of Subrogation

Permittee hereby grants to the "City of Hemet, its officers, employees and agents" a waiver of any right to subrogation which any insurer of said permittee may acquire against the City by virtue of the payment of any loss under such insurance. Permittee agrees to obtain any endorsement that may be necessary to affect this waiver of subrogation, but this provision applies regardless of whether or not the City has received a waiver of subrogation endorsement from the insurer.



4. Fee Information

Film Permits:

The City of Hemet has adopted a program of **no fee** film permits as an inducement for film production in the City.

Facility Use Fees:

As an added incentive, there is **no charge** to film on City property or at / in City-owned buildings once approved by the City.

Staffing and Miscellaneous Fees:

The table below does include estimate for fees charged associated with City involvement in film production.

Description	Fee	Special Notes
Police Officer, if required	\$80 - \$120/hour (depends on pay rate of person assigned)	This will be invoiced separately after the shoot. Note that other Police resources such as a police vehicle or motorcycle may be required and are charged separately from the officer.
Public Works personnel, if required	Approx. \$55 per hour (depends on pay rate of person assigned)	This is at the discretion of City whether a shoot requires staffing for the entire duration or "spot checking" at the start, mid-day and wrap times.

The City requires a good faith deposit, in advance of filming towards the estimated costs associated with City support of film production.

5. Cancellation Policy:

We expect that your production has given prior thought as to how weather and personnel issues might affect your shoot schedule. While we generally do not refund money if a shoot has been cancelled, we will work with you to reschedule the date if it is needed. If the production cancels less than 24 hours prior, due to non-weather related reasons, no fees will be refunded because personnel were already scheduled,



6. The Next Step:

Please submit the following:

- Completed Photo and Film/Video Shoot Application – To:
 - City of Hemet Permit Office – Fax Number: 951-765-3785
 - E-mail it to filminhemet@cityofhemet.org
 - Deliver to Cityhall, 445 E Florida Avenue - Hemet, CA 92543
- Certificate of Insurance for the appropriate insurance limit
 - The "*City of Hemet, its officers, employees and agents*" should be named as additional insured.
 - Do not delay in submitting the application while waiting for your insurance certificate. That can be submitted separately.

The City of Hemet Photo and Film/Video Permit Office will contact you about other possible requirements once your application is reviewed. You may also be required to submit a site map showing where actors/models, camera, lighting, other equipment, etc. will be placed so that staff has an accurate understanding of the proposed layout of your shoot.

If you have questions before you submit the application, please phone the Photo and Film/Video permit service at 951-765-2308 or e-mail questions to filminhemet@cityofhemet.org



City of Hemet Photo and Film/Video Shoot Application

1. Type of Production

_____ Still Photography _____ Educational / Documentary / Industrial / 2nd Unit
_____ TV Commercial _____ TV Series / Music Video _____ Feature Film / TV Movie
_____ Student Still Photography _____ Student Film

2. Production Title / Name

Title _____

3. Applicant Information

Applicant _____

Title _____

Company _____

Address _____

City _____ State _____ Zip _____

Office Phone _____

Fax Number _____

Cell Phone _____

Email _____

Company Website _____



4. Location Information

LOCATION #1

Private Property _____ Street / Sidewalk _____ Park _____

Date _____

Start Time _____ End Time _____

Describe scene (please be as detailed as possible) ***Attached Separate Sheets as needed.***

Requesting exclusive use of location?

On-Site Representative & his/her title

On-Site Representative's Cell Phone

LOCATION #2

Private Property _____ Street / Sidewalk _____ Park _____

Date _____

Start Time _____ End Time _____



Describe scene (please be as detailed as possible) ***Attached Separate Sheets as needed.***

Requesting exclusive use of location?

On-Site Representative & his/her title

On-Site Representative's Cell Phone

LOCATION #3

Private Property _____ Street / Sidewalk _____ Park _____

Date _____

Start Time _____ End Time _____

Describe scene (please be as detailed as possible) ***Attached Separate Sheets as needed.***

Requesting exclusive use of location?

On-Site Representative & his/her title

On-Site Representative's Cell Phone



5. Personnel

of Crew _____

of Actors / Models ____ -- _____

6. Equipment

of cameras _____

6. Sound Equipment

Describe _____

of Generators _____

of Lights, Reflectors _____

Playback Area on-site? _____

Craft Service on-site? _____

7. Vehicles

of motorhomes and their length _____

of production vehicles and their length _____

of on-camera vehicles _____

of crew vehicles _____

8. Props, Production Details and Support

A. Planning on bringing in sets, dressings or props? _____ No _____ Yes,
description below.

B. Expecting any continuous or intermittent sounds that could be considered excessive or irritating
when compared to normal noise levels in the area? _____ No _____ Yes, describe below.



C. Any weapons used in the production? ____ No ____ Yes, describe below.

D. Any pyrotechnics or special effects in the production? ____ No ____ Yes, describe below.

E. Will production need to remain on-site overnight? ____ No ____ Yes, please indicate how overnight security will be handled.

F. Will portable toilets be brought in? ____ No ____ Yes, describe below.

G. Planning to block sidewalks or stop traffic in street? ____ No ____ Yes, describe below.

H. Need to post "no parking" on streets or nearby parking lot for production vehicles or crew vehicles? ____ No ____ Yes, describe below



I. Need to pre-reserve parking spaces in one of the City's parking lots?

___ No ___ Yes, describe below

J. Is any aircraft being used?

___ No ___ Yes, describe below.

Include the "N" number of each, whether it will be a camera mount aircraft or action aircraft, minimum altitude of each aircraft and whether it will be crashed/damaged or landing outside the Hemet Ryan Field. Note that FAA clearance must be verified.

FAA Officer contacted

K. Request for Hemet Police Officers, vehicles or other police equipment? ___ No ___ Yes, please indicate the number you are requesting of each.

Please sign and email completed application to: filminhemet@cityofhemet.org

Applicant agrees to investigate, defend, indemnify and hold harmless the City, its officers, employees and agents from and against any and all loss, damage, liability, claims, demands, detriments, costs, charges, expense (including attorney's fees) and causes of action of any character which the City, its officers, employees and agents may incur, sustain or be subjected to on account of loss or damage to property or the loss of use thereof and for bodily injury to or death of any persons (including but not limited to the employees, subcontractors, agents and invitees of each party hereto) arising out of or in any way connected to the occupancy, enjoyment and use of any City premises under this agreement to the extent permitted by law.

Signature of Applicant: _____

Date: _____

Print Name: _____

APPROVAL(s):

Signature: _____ **Date:** _____

Print Name: _____

Title: _____



Economic Benefit Reporting:

In support of the no fee permit program, the City requires you to provide information about the economic impact of local media production.

Please fill out section "A" with the submission of the application for a permit. Follow up with completed sections "B" and "C" no more than 10 (ten) business days after wrap of your Hemet shooting. Email or fax this form to the Hemet Film Permit Service at 951-765-3785 or filminhemet@cityofhemet.org. Reported information will remain confidential.

A) Contact Name for Final Economic Impact Reporting

Name: _____ Phone: _____

E-Mail: _____

B) Economic Reporting (USD)

1. Lodging

Room Nights in Hemet Motels (# of crew x number of nights): _____

Name of Hemet Motels(s): _____, _____,

Rate Paid at Motel(s): _____, _____,

2. Hiring

Hemet Crew Hires:

Total # Hires: _____

Total # Days worked: _____

Hemet Cast Hires:

Total # Hires: _____

Total # Days worked: _____

Post Production costs to be spent in Hemet: \$ _____



C) Feedback

Please let us know if you had a positive experience filming in Hemet, or how we can better serve your next Production. Thank you.

The End....roll credits.