

Pattern Project: Cube by cube

Jennifer Airls

This simple three-dimensional right angle weave is worked with illusion cord/monofilament (for cord invisibility) and faceted, fire polished beads. The bracelet curves beautifully for a chunky bangle look on a 7-inch (18cm) wrist.

It can be made larger or smaller by changing the number of small cubes. Using four instead of three on each end of the bracelet will make a difference of 0.8" or 2cm. Alternatively you can use more or fewer beads in the 'strings' attaching the clasp.

The pendant takes an hour to make, the bracelet 2 hours. It has been filmed by Bead TV and appears on the DVD *Right Angle Weave with Jennifer Airls*.

Materials – Bracelet

- 37 × 6mm main fire polished beads – your A beads
- 24 × 6mm contrast fire polished beads – your B beads
- 48 × 4mm contrast fire polished beads – your C beads
- 20 × 4mm main fire polished beads – your D beads
- A few toning seed beads – your E beads
- 4.5m 0.01" (0.25mm) Illusion Cord
- Clasp
- 2 wire guardians (optional)

Materials – Pendant

- 22 × 4mm contrast fire polished beads – your C beads
- 34 × 4mm main fire polished beads – your D beads
- 1.5m 0.01" (0.25mm) Illusion Cord
- Crimp and Go cable or similar

Materials – Both

- Glue (optional)
- Needle (optional)
- Scissors
- Thread bobbin (optional)

Method – The bracelet

Unwind about 2m of illusion cord from the reel and either leave the spool attached or use a thread bobbin to hold another 2m for the bracelet.

The same method is used for all the cubes. I used 5 large cubes (made with the 6mm beads) and 6 small cubes (made with 4mm beads) in my bracelets and 5 small cubes in my pendant.

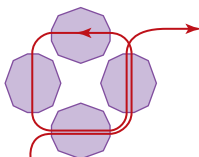
For the bracelet you will start in the 'middle', making three large cubes then three small cubes. After this you will go back to the 'middle' and make the second 'half' which consists of *two* large cubes and three small. Finally you will add the 'strings' that attach to the clasp.

NB Tighten your cord at each step as a tight tension is needed to get firm cubes. Double stitch cubes for increased firmness.

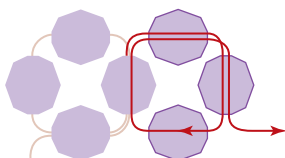
Making cubes

(In the diagrams, newly added beads are shown with a dark outline and new thread paths are shown dark.)

1st face. Start at the centre of your piece. Thread 4A beads onto the cord and stitch through the first 2 again to make a loop. Push the beads together and double stitch.

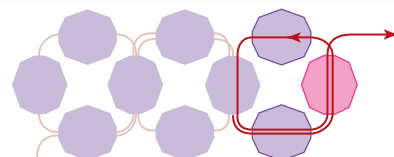


2nd face. Pick up 3A and stitch back through the last bead from 1. Push the beads together and double stitch.

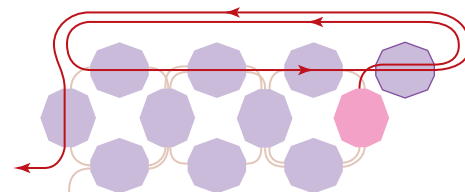


3rd face. Pick up 3A and stitch back through the last bead from 2. The middle bead of the step, the connecting bead, will be used to start the next cube. If changing

to a contrast colour in the next cube, for example pick up 1A 1B 1A. In the bracelet centre I used contrast connecting beads for the cube sides connecting with contrast cube, but main connecting beads at the end of this section: the smaller cube sections used main colour connecting beads; as did the pendant.



4th face. Pick up 1 A and stitch through the 3 top beads as shown in the diagram. Stitch through the new bead again and down through the side bead of the first square.



Add your final bead in the same way. Push the beads together and double stitch.

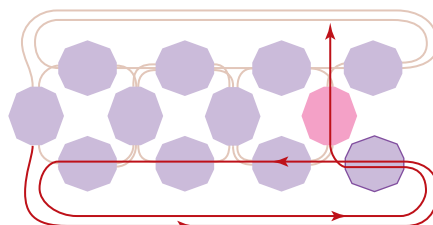


Photo: Jennifer Airls

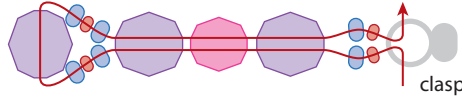
5th and 6th face. Double stitch around the last 2 faces: all beads are present. If you have a contrast bead stitch back so your thread exits from it.

Continue to add cubes until you have completed this 'half' of your desired number of cubes. Fasten your cord in the usual way and seal with a tiny drop of glue. When dry, cut the cord.

Unroll a similar amount of cord and complete the other 'half' of the cubes in the same way.

Attaching the clasp

You start at the clasp end. With 20cm of cord, pick up some E beads, some A,B,C or D beads, some E beads, the last A,B, C or D bead in your line of cubes, and some E beads. Stitch through the A,B,C or D beads, pick up some E beads and a clasp (with wire guardian if using one) as in the diagram.



Take both ends of thread back through this section of beading (and the clasp) to the cubes and fasten and neaten the cord ends as before.

Method – The pendant

The pendant comprises a 'rod' of five small cubes made in the same way as the bracelet cubes. It uses about 1.5m of illusion cord.

Once the 'rod' is complete, pass a cable or your preferred cord through the central hole in the 'top' cube and attach a clasp.

