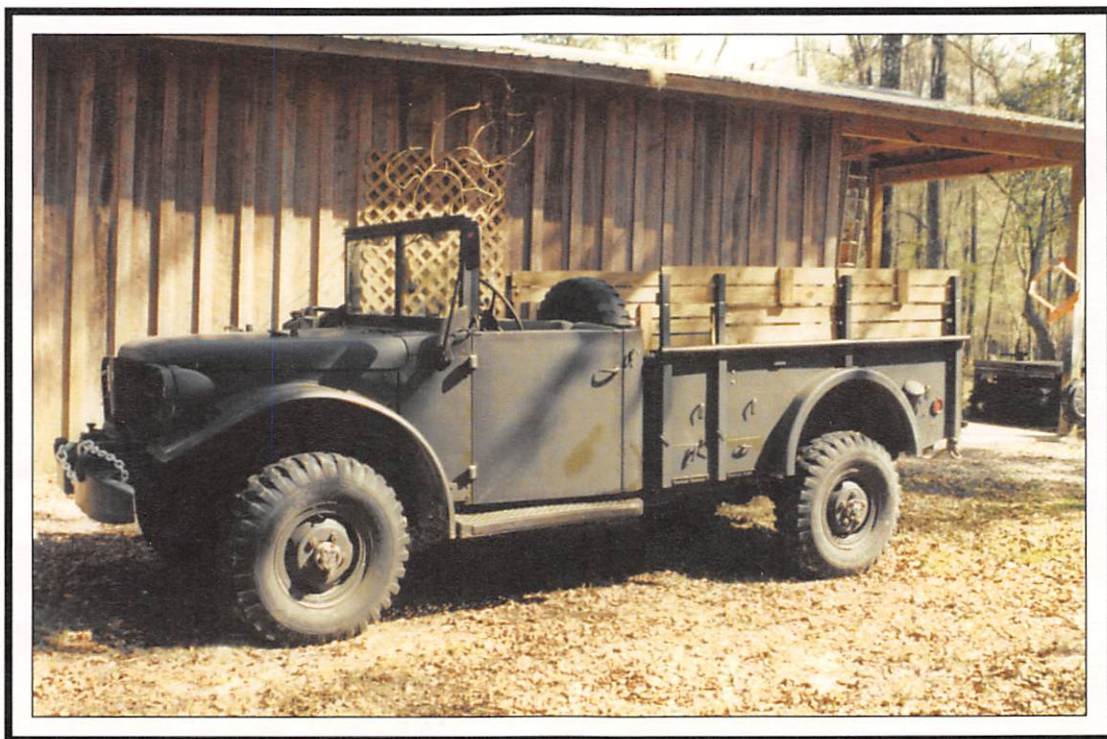


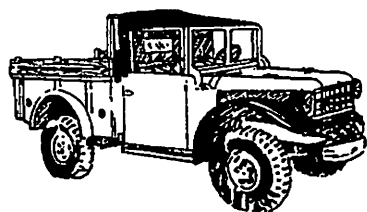
VETERAN VEHICLES

PARTS AND GEARING
MARCH 2020

DODGE
POWER WAGON
WC M37 PW



March 2020



VETERAN VEHICLES

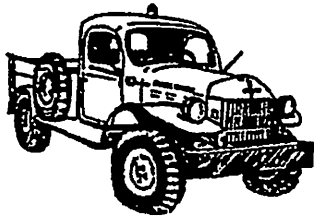
215 Everett Street
Wrentham, MA 02093

Robert B. Stahl
508-384-7698

Dodge WC, M37, Power Wagon Engine Group

Engine

L230, L237 less accessories			Core	\$900
L230, L251 less manifold, accessories			Core	600
L230 with 727 Auto Trans, 12V acc.			Rebuilt	1600
T214 Complete Take Out			Seized	1200
Engine Components - L230				
Bare Block - Std to .02 bore				300
Crankshaft; std. to .02				250
Fan belt pulley	100 AMP	75	M37	25
Connecting Rod				45
Timing chain cover				20
Oil Pan			Clean	90
Oil Pump, M-Series or Civilian			Inspected	50
Crankcase vent system				Call
Oil filter ass'y with fittings and mt. bracket				45
Bell Housing				85
Belly Pan with end plate				25
Flywheel with 146 tooth ring gear				50
Pressure Plate, 10"	T/O	45	11 Inch	
100				
Clutch plate, 10"	New	90	11 Inch	90
Clutch Throw out bearing			New	35
Head			Clean	50
Cooling System				
Cast Thermostat housing	WC, PW	30	M37	25
Al. Elbow, Thermostat bi-pass			M37	15
Water pump with gasket			New	90
Pulley, water pump	100 Amp	75	M37	15
Radiator, Mil. or Civ.; professionally Tested			T/O	Call
Tube, radiator outlet; with heater access		25	Plain	15
Fan Shroud				40
Fan	6 blade	35	4 blade	30
Fuel - Air System				
Carburetor				
Ball and Ball for M37	Core	100	Rebuilt	325
Zenith for WC	Core	120	NOS	350
Carter BB for PW	Core	90	Rebuilt	300
Rebuild Kit; M37, WC Carburetor			New	60
Air cleaner, M37 oil bath			Clean	50
Elbow, M37 - carburetor to air cleaner with fittings				35
Support bracket, M37 air cleaner			Each	10
Filter ass'y., Firewall Mounted for M37			T/O	40



March 2020

VETERAN VEHICLES

215 Everett Street
Wrentham, MA 02093

Robert B. Stahl
508-384-7698

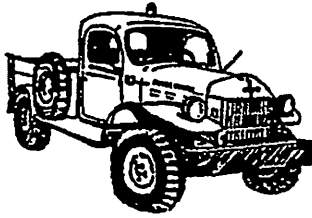
**Dodge WC, M37, Power Wagon
Engine Group**

Exhaust Components

Manifold Ass'y; 218, 230			Good Cond.	\$325
Manifold Ass'y.; 218, 230	Rear or offset discharge		Recon	390
Manifold – exhaust; 218, 230	NOS	400	Good Cond.	240
Manifold – intake; 218, 230			Good Cond.	100
Manifold ass'y.; 237, 251	Four Bolt Discharge			350
Exhaust System, M37 – including gaskets				250
Ignition/Electrical				
Igniter – 24V for M37			Recon	175
24V for Canadian M37 with L251			Recon	200
Distributor cap, heavy duty M-Series			Bakelite	60
Tune-up Kit; points, cond., rotor				35
Coil, 24V				50
Distributor; WC, PW	T/O	110	Recon	175
Spark Plug, M-Series resistor			Set 6	Call
Plug Wires, M37; Set 6	T/O	175	New	325
Starter, 24V for M37			Tested	90
6V for WC, PW			Tested	90
12V for WC, PW			Tested	160
Generator, 25 Amp. For M37			Tested	150
6V for WC, PW			Tested	150
12V for WC			Tested	175
Regulator, M37-Mechanical			Orig.	100
6V 40A PN 922487 for WC			NOS	250
Cable, generator to regulator for M37				35

Driveline Gearing

Transmission - including shifting tower				
NP Sliding Spur for WC, early PW				250
NP Sliding Spur for PW, 51-54				300
NP Synchro for M37-Less Tower				300
NP 420 Synchro for M37B1 and late PW – less Tower				350
NP4 spd. Synchro – 50 es commercial, light truck				250
Shifting Towers				85
Transfer Case: (Gasket & Seal Kits Available)				
NP single speed for WC ¾ ton				250
NP200 with 1.5 ratio for WC 62				350
NP200 for M37, PW				300
NP201 with PTO for PW				450
PTO WC, PW; bi-directional				250
bi-directional, dual output				350



March 2020

VETERAN VEHICLES
 215 Everett Street
 Wrentham, MA 02093

Robert B. Stahl
 508-384-7698

Dodge WC, M37, Power Wagon
Third Member

Recon. 5.83 with preloads and gear lash reset; new seal & seal surface	Clean	400
Rebuilt with 5.83 gearing; new bearings as req'd., new seal & seal surface, and recon. differential with new bronze thrust washers		1250
Rebuilt with highway gearing; new bearings as req'd., new seal & seal surface, and new differential components	Exchange	1800
Rebuilt with highway gearing (above) less exchange		2000

Third Member Components

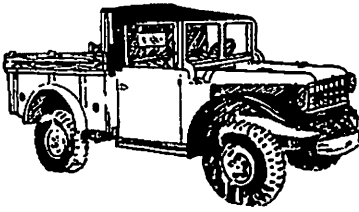
Ring and Pinion, 5.83 ratio	NOS	\$300	Matched Set	160
Ring and Pinion, 5.83 ratio – early WC			NOS	180
Ring and Pinion, 4.89 ratio – early WC			Matched Set	400
Differential reb'ld. Kit incl. new bronze Thrust washers			NOS	85
Differential Ass'y - Rebuilt with New Bronze Thrust Washers				400
Differential case with cap			Clean	160
Carrier housing with bearing caps			Clean	100
Press plate – for removal of 5.83 pinion shaft bearing			NOS	75

Axle and Driveline

Spindle, front axle			T/O	45
Housing, 2 pc steering bell, with the rod arm			L or R	85
Driveshaft:				
Front or rear with universal, mil. or civ.			T/O	120
Front, all rears incl. WC62 – less universal for WC, PW			NOS	60
Slip spline, female with universal for mil. or civ.			T/O	50
Center – complete unit with universals, mil. or civ.			T/O	85
Pillow Block with drive yokes – WC62 driveline			NOS	175
Detroit Yolk - Transfer Case Center Driveshaft			NOS	90
Universal Joint:				
Driveshaft, F or R			New	35
Driveshaft, Center			NOS	55
Axle shaft:				
Front ass'y., Tracta type for M37, PW	Inner	70	Outer	55
Front ass'y., Bendix-Weiss for WC, PW	NOS	185	T/O	100
Rear for PW, M37			T/O	90
Axle Assy. - rear WC51 Ctr. Diff with drive axles				500

Hub and Bearing

Wheel hub with bearing races and lugs				60
Seal, outer rear hub, rubber			Set of 2	20
Seal, inner wheel hub, rubber			Set of 4	40
Socket wrench, wheel bearing nut			NOS	20



March 2020

VETERAN VEHICLES
 215 Everett Street
 Wrentham, MA 02093

Robert B. Stahl
 508-384-7698

**Dodge WC, M37, Power Wagon
 Brake Components**

Wheel cyl. – left or right	Set of 4	\$150	Each	\$40
Master cyl.				90
Repair kit, Master cyl.				30
Brake shoe, New	Wheel set (2)	65	Truck Set (8)	250
Brake drum			Clean T/O	70
Backing Plate – Complete with anchors and adjusters			T/O	50
Brake hose with wire wrap			Each	28
Brake handle, parking with pall ass’y.			T/O	45
Parking brake drum			T/O	40

Electrical

Gauge Group, 24V M-Series

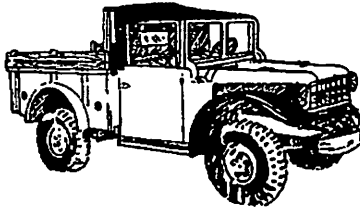
Gauge plate with instrumentation				95
Speedometer			T/O	45
Gauges			T/O	20
Gauge sending unit				
Oil Pressure (60 PSI)			T/O	25
Temperature			T/O	25
Fuel			New	40

Light/Switch Group – 24 V M-Series, NEW

Headlight Ass’y. incl. door and retainer,			M37	85
Headlamp – 3 wire Packard or 3 prong				50
Black out driving light with bkt.			M37, M715	75
Stop and tail light ass’y. (NATO composite)				45
Bulb, 24V, Stop and tail				Call
Light switch, 3 lever			New	85
Early 50es with offset receptacle			Tested	95
Directional control switch (steering column)				45
Directional flasher – solid state				45
Ignition Switch				55

Accessory Group

Horn, 6V, 12V, 24V			T/O	30
Horn button kit			M37	30
Windshield wiper arm				10
Windshield wiper blade			Pair	15
Electric wiper, 12 or 24V – incl. arm & blade			New	75
Electric wiper, 6V for PW			Bosch	50
Siren, 12V			Tested	150
Heater; 6V, 12V, 24V				Call



March 2020

VETERAN VEHICLES
215 Everett Street
Wrentham, MA 02093

Robert B. Stahl
508-384-7698

**Dodge WC, M37, Power Wagon
Body Group**

Grill/Hood/Fender

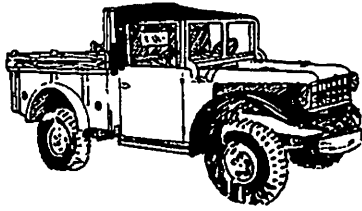
Grill guard, upper or lower	each	\$40	Set (2)	\$75
Headlight guard	M37	35	WC	65
Vertical side panel, front grill ext. WM300 with 251			Pair	100
Vertical grill Panel, M37 – L or R				
35				
Cover Plate, radiator; M37				15
Front Cowl Over Radiator			PW, WC	100
Hood; M37, PW				100
Side Panels, M37 – below hood				15
Pioneer rack, Military			Good Cond.	75
Rear Fender, M37	NOS	150	T/O	85
Front Fender, good cond.	M37	200	WC	250
Inner skirt	M37	25	PW	40
Rear Splash Panel			M37	40
Support Bracket, F or R	M37	25	PW	50
Splash Panel, Eng. Compartment				20
Jerry Can Saddle, M Series				30
Running Board, M37			Straight	85
Support bracket			Each	25

Cab/Door

Cab Tub, M37			Fair	250
Cab, WDX without doors			Fair	300
Door, M37; L or R			Fair	150
Door, PW; Right Side			Fair	150
Cab Top Structure, M37 incl. bow				500
Floor pan. M37 Trans cover				50
Battery Box with cover, M37				85
Glove Box				30
Driver's Seat ass'y., M37				85
Windshield components, M37				Call
Windshield ass'y. for WC Tactical			Good	500
Windshield frame, outer, for WC Tactical			NOS	400

Bed/Compartment

Cargo Bed, M37 less gate			Fair/Good	600
Tailgate hinge			Pair	45
Fuel Tank Filler and cap				35
Patient Compartment components			M43	Call



March 2020

VETERAN VEHICLES
 215 Everett Street
 Wrentham, MA 02093

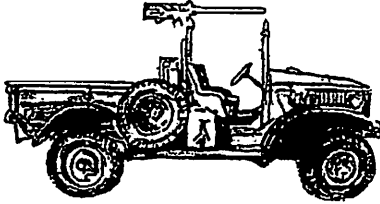
Robert B. Stahl
 508-384-7698

**Dodge WC, M37, Power Wagon
 Wheel and Chassis Group**

Bumper, All Trucks			Straight	\$160
Mounting brackets	Upper	25	Lower	35
Bumperette, rear			M37	50
WC56-Command Car, WC51, WC53			Pair	150
Frame				
M37, M43 - Clean				300
WC51, WC56 – Sandblasted/painted				400
WC52, WC53 – Some rust				300
Wheel – rim	Combat	200	M37, PW	90
Retention Ring for M37, PW			NOS	30
Tire chains for 900-16, NOS			Pair	135
Pintle hitch, M37	3 pc	100	B1	75
WC 62				135
Spring, F or R				90
Saddle, frame mounted				45
Shackle	M37	20	WC, PW	40
U-bolt with Tall Nuts				25
Shock absorber, Tested	M37	45	WC	35
Steering box				200
Steering linkage/arms				Call
Tie Rod End, Left or Right			NOS	50
Frame extensions, 230 and 251 Power Wagons			Pair	140

Parts – Retrofit

Transmission				
SM 420 Muncie 4 spd. Synchro with bi-directional PTO (48-66)				450
SM 465 Muncie 4 spd. with Rockwell gear Transfer				450
NP420 for Dodge 318 Bell.				400
NP435 shorty transmission				400
ZF5 5 spd. OD with PTO				450
251 VO Clark 5 Spd. with .8 OD				750
Transfer case				
NP205 with PTO	W/O PTO	300		450
Bell Housing				
Dodge 318 with Mech. Clutch				90
Dodge 318, heavy cast with hydro clutch				160
Chev. Small block with mech. Clutch				90
Manifold – exhaust				
Ctr. and offset dump for Chev. Chev. V. 8 Small Block			Pair	90
Ctr. and offset dump for Dodge 318			Pair	90



VETERAN VEHICLES

215 Everett Street
Wrentham, MA 02093

March 2020

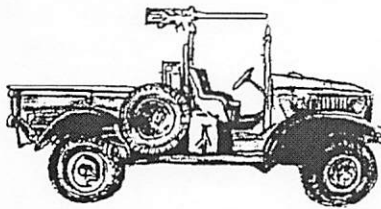
Robert B. Stahl
508-384-7698

Dodge WC, Half Ton New and T/O Parts

Engine Components – Page 2, 3

Radiator - original	Tested	350
Transmission		
NP Four spd. for mil. half ton		275
NP Three spd. for 41 civilian		250
NP Three spd. Synchro for 49 civ.		300
PTO; bi-directional for front winch		300
Transfer		
NP 37810 for WC half ton		275
Driveshaft – Detroit or Mechanics		
Front or Rear with univ.		120
Slip spline end with univ.		50
Center – complete unit with univ.		85
Universal Joint		
Detroit for early T207		30
Mechanics type for T211, T215		75
Differential – Carrier ass'y. (Third Member):		
Serviceable T/O with 4.89 gearing and new seal & seal surface		800
Rebuilt with 4.89 gearing; new bearings as req'd., new seal, and new differential components	Exchange	1200
Third Member Components		
Ring and Pinion		
4.89 ratio for WC	Matched Set	400
4.30 ratio for 37-42 Plymouth	NOS	360
Seal-drive pinion	NOS	20
Differential Case with Cap		150
Diff. Assy complete with pinion gears	Good Cond.	225
Carrier housing with bearing caps		90
Axle Components		
Rear axle housing with 14" brakes/drums		300
Rear axle ass'y., 41 WC half ton – 2 WD Civilian		300
Differential cover, axle housing		25
Spindle, front axle		45
Housing, 2 pc steering bell	L or R	85
Trunnion bearing end cap with steering arm		20
Seal – inner front axle	Pair	35
Felt wiper steering bell		18
Front axle shaft ass'y.		
Bendix – Weiss		130
Rear axle shaft		70

March 2020



VETERAN VEHICLES

215 Everett Street
Wrentham, MA 02093

Robert B. Stahl
508-384-7698

Dodge WC, Half Ton New and T/O Parts

Wheel Hub and Brake

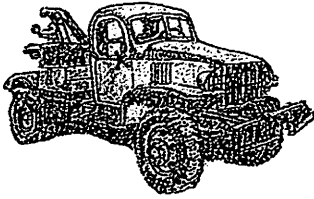
Wheel hub with integral 11" drum	L or R	90
Wheel hub with 14" drum	L or R	175
Seal, outer rear hub, rubber	Set of 2	20
Seal, inner wheel hub, rubber	Set of 4	60
Socket wrench, wheel bearing nut	NOS	20
Wheel Cyl. - 14" Rear		40
Wheel Cyl. - 11" F or R		65
Master Cyl.		90
Brake shoe - 14" Rear	Wheel/Set (2)	65
Brake shoe - 11" Front or early rear		Call
Brake Hose		40
Backing Plate, Front - complete with anchors and adjusters		50
E brake handle with pall ass'y.		45

Chassis and Wheel

Frame - good cond.		300
Spring - F or R		90
Spring mounting hardware		Call
Shock Absorber - rebuildable	L or R	45
Wheel Rim - for 7.50 - 16 Tires		
Deep dish for dual wheel	Original	90
Shallow dish for single wheel	Upgrade	90
Tie Rod end - L and R	T/O	50
Steering box		200
Bumper, Front	New	90
Bumperette, rear	Pair	120
Pintle Hitch		125
Spare Tire Arm	Original	200

Bed and Body

Front Grill Guard		90
Front fender L or R	Good cond.	200
Front Cowl		90
Hood		100
Cab w/o doors - poor windshield	Fair cond.	300
Bed Side - L or R	Fair cond.	200
Bed - late 30's all steel with Dodge gate		500
Bed - 50's p/u, 6.5 with letter gate		400



VETERAN VEHICLES

215 Everett Street
Wrentham, MA 02093

March 2020

Robert B. Stahl
508-384-7698

Vintage Truck Parts

Engines

Chev. 250 OHV 6 cyl.	400
Ford L226 GTB 6 cyl.	500

Radiators

M35, M35A2, M211, WW2 1.5 T Chev., 50's 1.5T Dodge	Call
--	------

Transmission

Chev. 4 spd. For WWII 1.5 Ton	300
Warner T98A for M715	250
Ford 4 spd. For GTB or early Civ.	300
Spicer 3052, 5 spd. for M35	400

PTO; bi-directional

M 715, M35, M54, CCKW, MUNCI, M211	Call
------------------------------------	------

Transfer Case

NP gear with PTO for D500	450
Timken T-136 with Reb kit for M35	450
Rockwell T-136-27 airshift for M35A2	500
Rockwell T1138 airshift for M-series 5 ton	500

Axle Assemblies

Dana 70 with 5.83 gearing for M715	300
Ford split front or rear for GTB	350
Ford 1.5 ton split for WWII 2WD	350

Winches Front Mount

Braden MU2 Replica for WC, PW	400
Braden MU2A	400
Tulsa 5R, 8000 lb.	450
Braden MS3, 8000 lb	350
Braden, 10,000 lb for GTB	450

Front Mount 450

Bed Mount

Wheels

20" shallow dish combat for early 5 lug Ford	Set 3	300
17" & 18" deep dish Budd for early 5 Lug		Call
20" deep dish combat for APC	Set 5	Call
20" deep dish Budd for M35 duals		90
20" Shallow dish Budd for M35 single		90

Cargo beds/Parts

M35/M211 complete with gate	400
M54 fixed side with racks and gate	450
WWII 12' Troop carrier	Call

Windshield – M38A1C with gap for 106 recoilless rifle

250

Fuel Tank - Chev. 1.5T Bomb Service

NOS

350

Parts Vehicles

Dodge M43 ambulance with complete patient back
 Dodge B2F (51) 1.5T cab and chassis
 Ford GTB bomb services with complete crane
 GMC M211