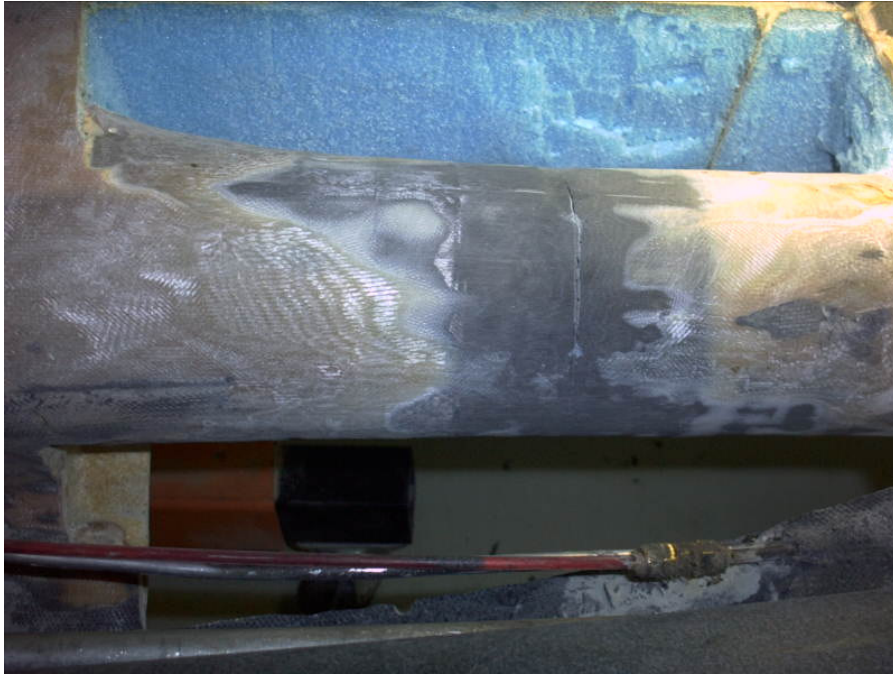


Jim Patillo's Carbon Spar Repair Photos

Photos embedded at larger resolution, magnify to see more detail



Crack in top of spar



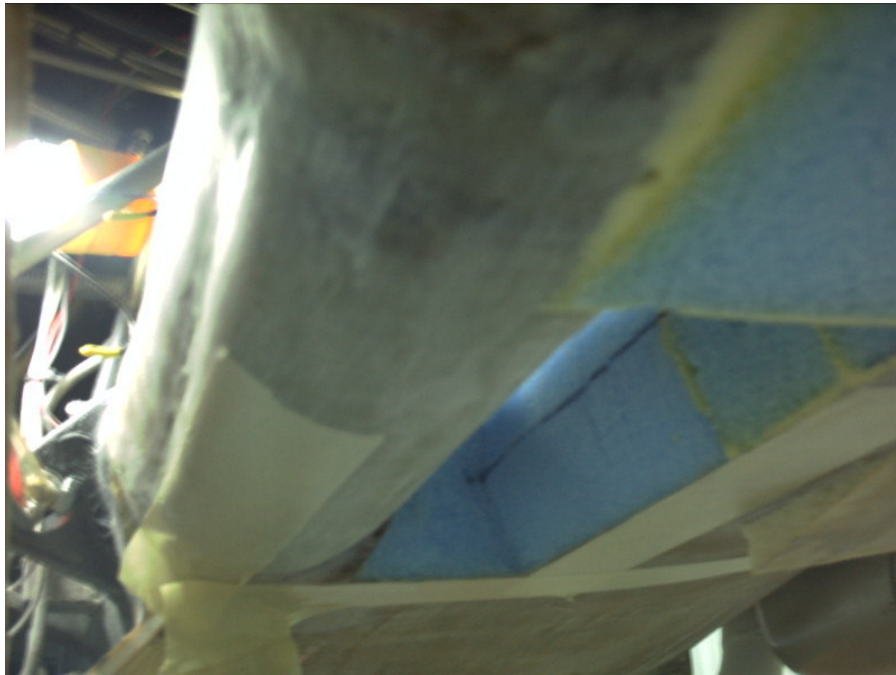
Crack in top of spar



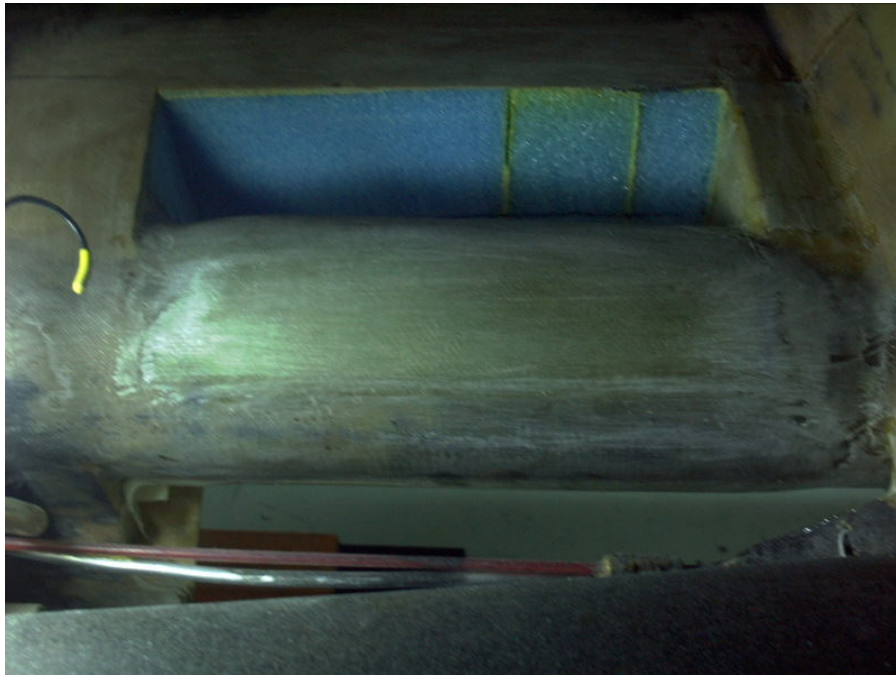
Bottom of spar



Glass layup bottom of spar



Glass layup bottom of spar



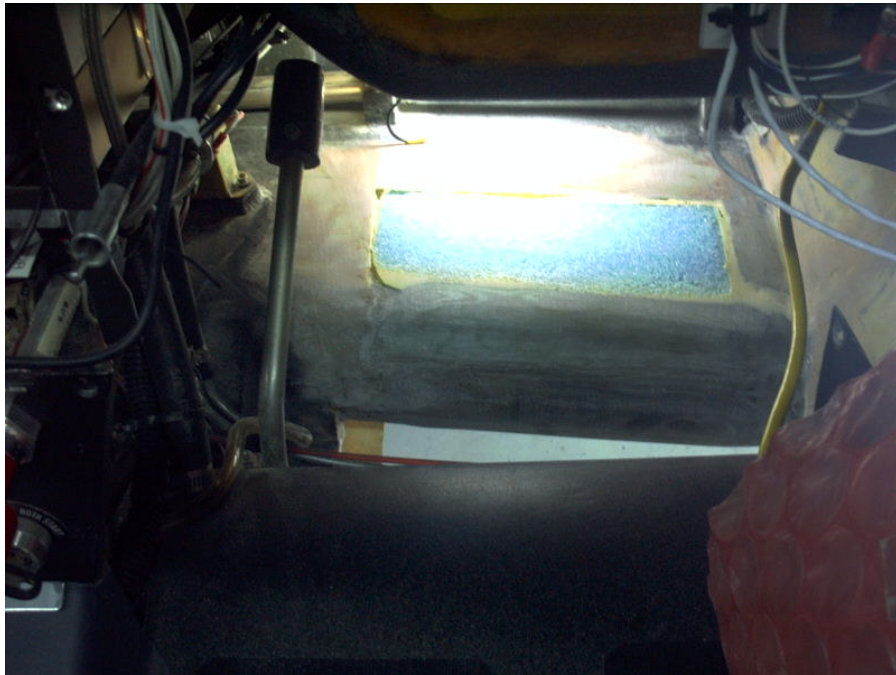
Glass layup top of spar



Glass layup top of spar



Bottom of canard close out



Foam installation top of canard



Foam installation bottom of canard



Top of canard glassed