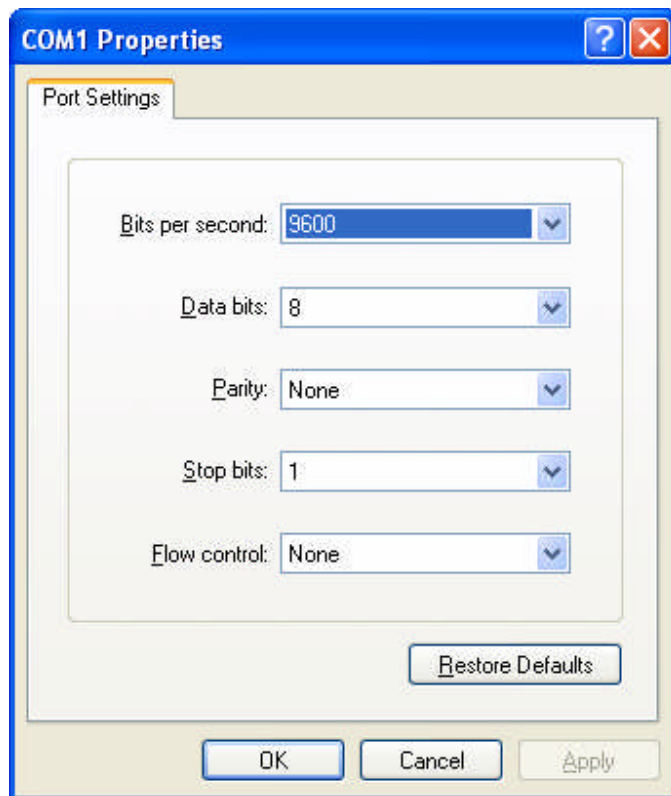


iDirect Infinity Modems Only

HyperTerminal Session:-



Username = root

Password = iDirect

Telnet 0

Username = admin ([Net-Modem II+ Series Modems Start Here](#))

Password = iDirect (Once option filed entered normal iDirect password
P@55w0rd! or iDirect

Type – LANIFNO (IP Address Of Modem Will Be Displayed)

Type – VERSION (Latest Version Software Will Be Detailed)

Type – Exit

Type – Exit (This logs You Out Of Modem Ending Hyper Term Session)

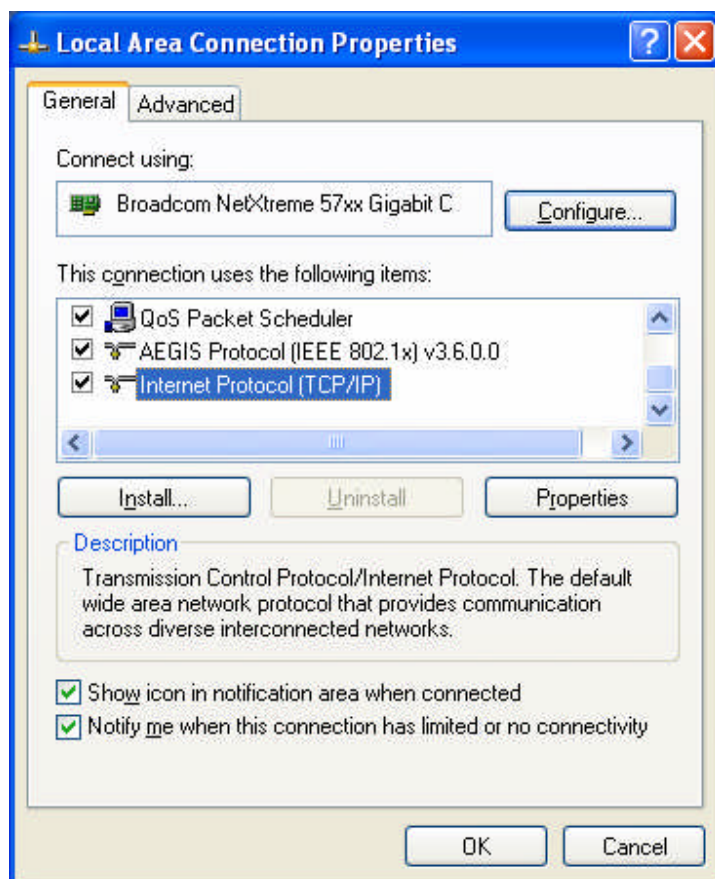
Connecting To Net-Modem Using LAN Cable. (Cross Over Required)

Network Properties.

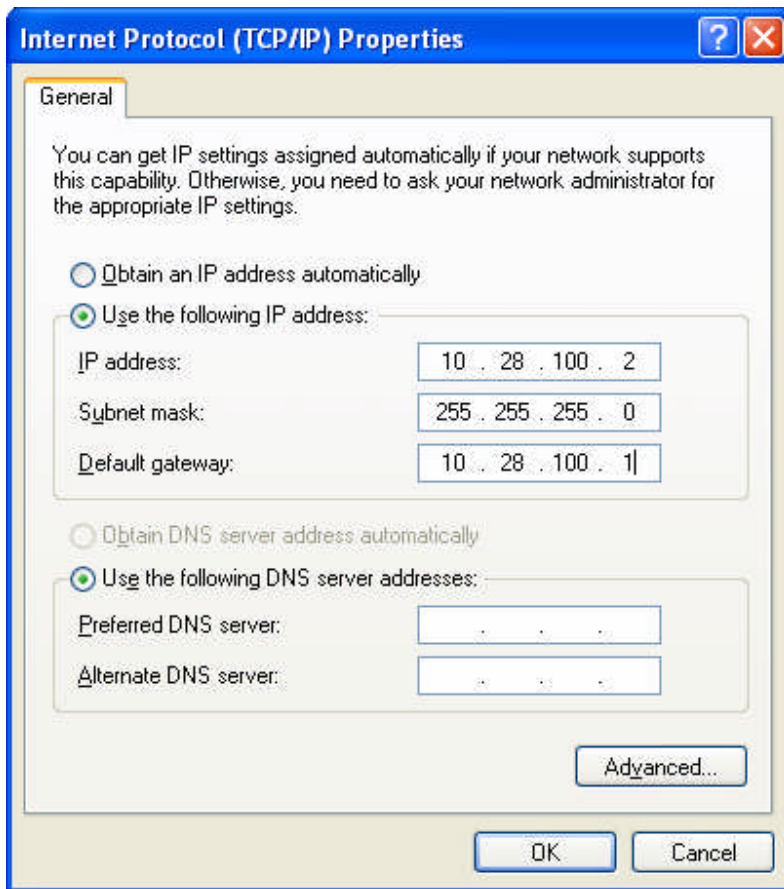


Right Click on Local Area Connection

Properties



TCP/IP Properties



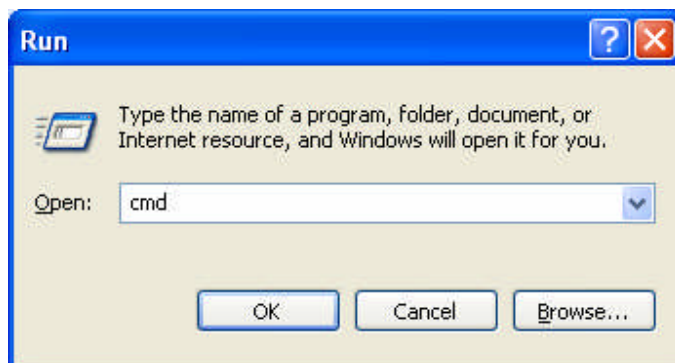
Enter IP Address for your PC in the IP Address Box. (This is the IP Address range of the Modem. Last Figure cannot be 1. This is the IP address of the Netmodem/Gateway.

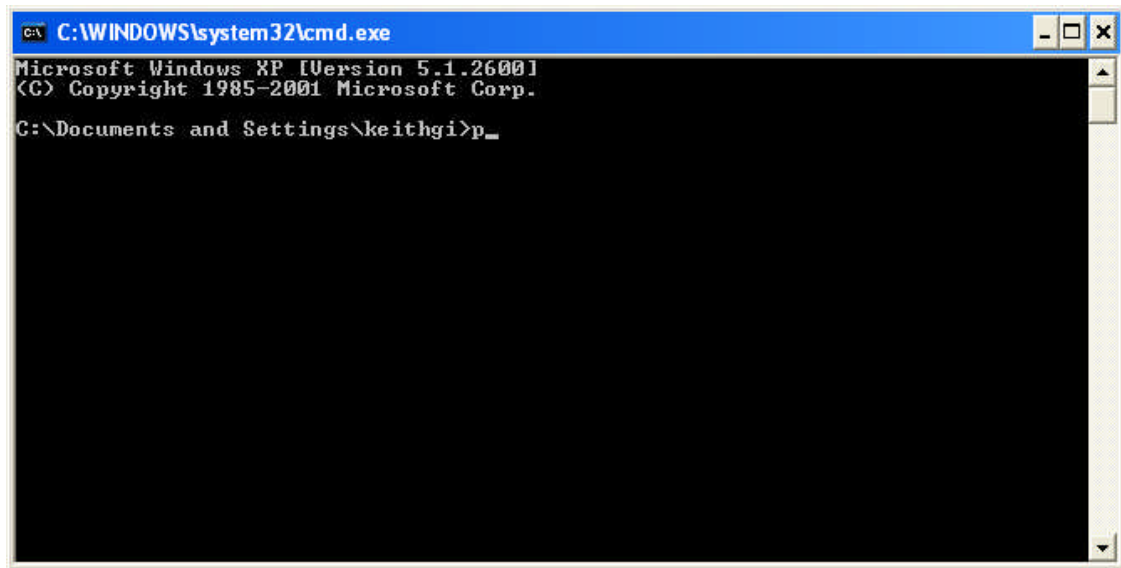
OK This Box

Close Local Area Properties Box

Start Menu

Run



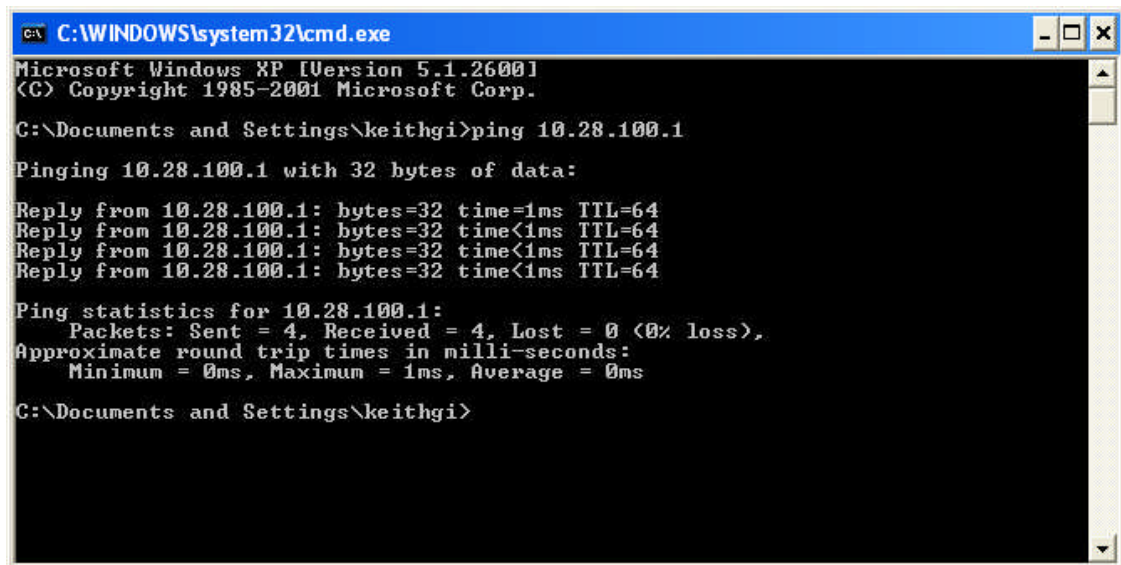


```
C:\WINDOWS\system32\cmd.exe
Microsoft Windows XP [Version 5.1.26001]
(C) Copyright 1985-2001 Microsoft Corp.

C:\Documents and Settings\keithgi>p_
```

In Cmd Box Type Ping (IP Address Of Your Modem) 10.28.100.1

You should receive replies from the modem confirming your connection via LAN cable to the Modem.



```
C:\WINDOWS\system32\cmd.exe
Microsoft Windows XP [Version 5.1.26001]
(C) Copyright 1985-2001 Microsoft Corp.

C:\Documents and Settings\keithgi>ping 10.28.100.1

Pinging 10.28.100.1 with 32 bytes of data:

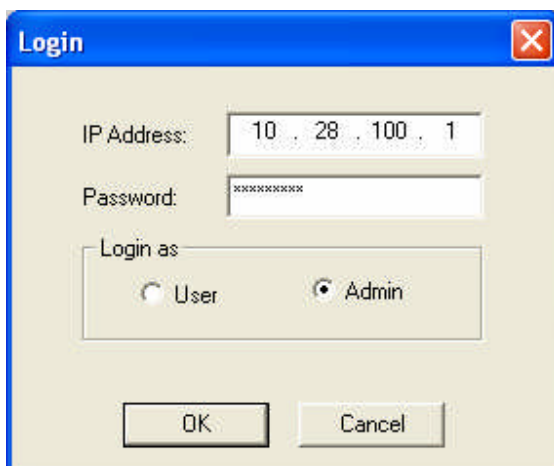
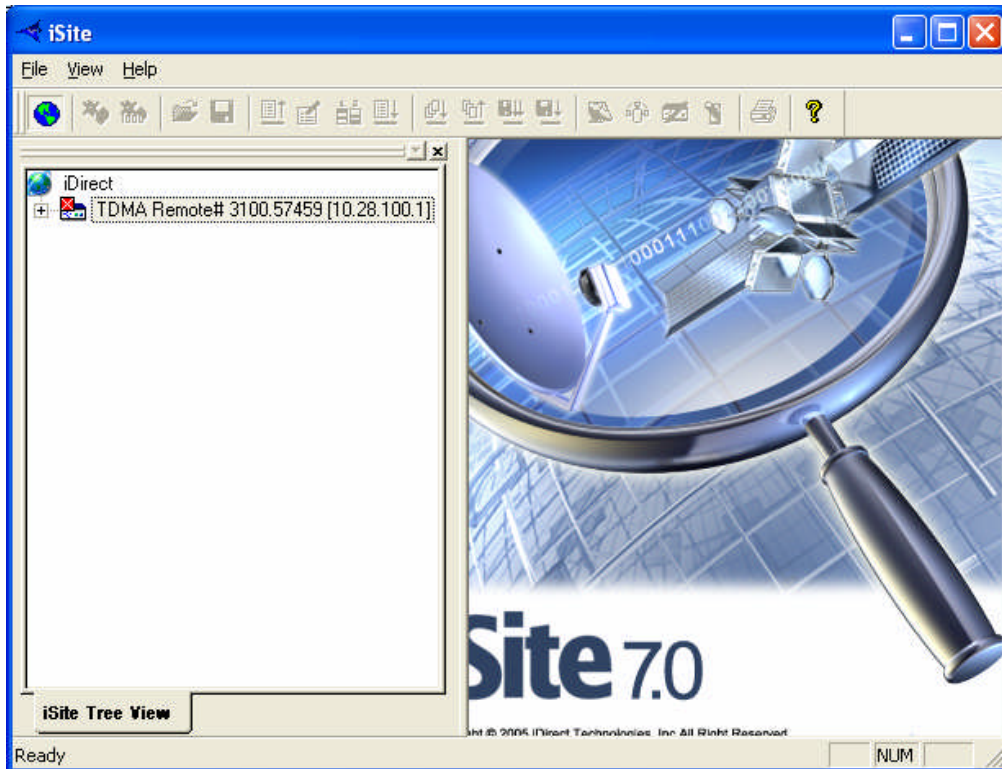
Reply from 10.28.100.1: bytes=32 time=1ms TTL=64
Reply from 10.28.100.1: bytes=32 time<1ms TTL=64
Reply from 10.28.100.1: bytes=32 time<1ms TTL=64
Reply from 10.28.100.1: bytes=32 time<1ms TTL=64

Ping statistics for 10.28.100.1:
    Packets: Sent = 4, Received = 4, Lost = 0 (0% loss),
    Approximate round trip times in milli-seconds:
        Minimum = 0ms, Maximum = 1ms, Average = 0ms

C:\Documents and Settings\keithgi>
```

Open I-Site

When I-Site is opened you should see the IP Address of the Net-Modem on the Right Hand Section.



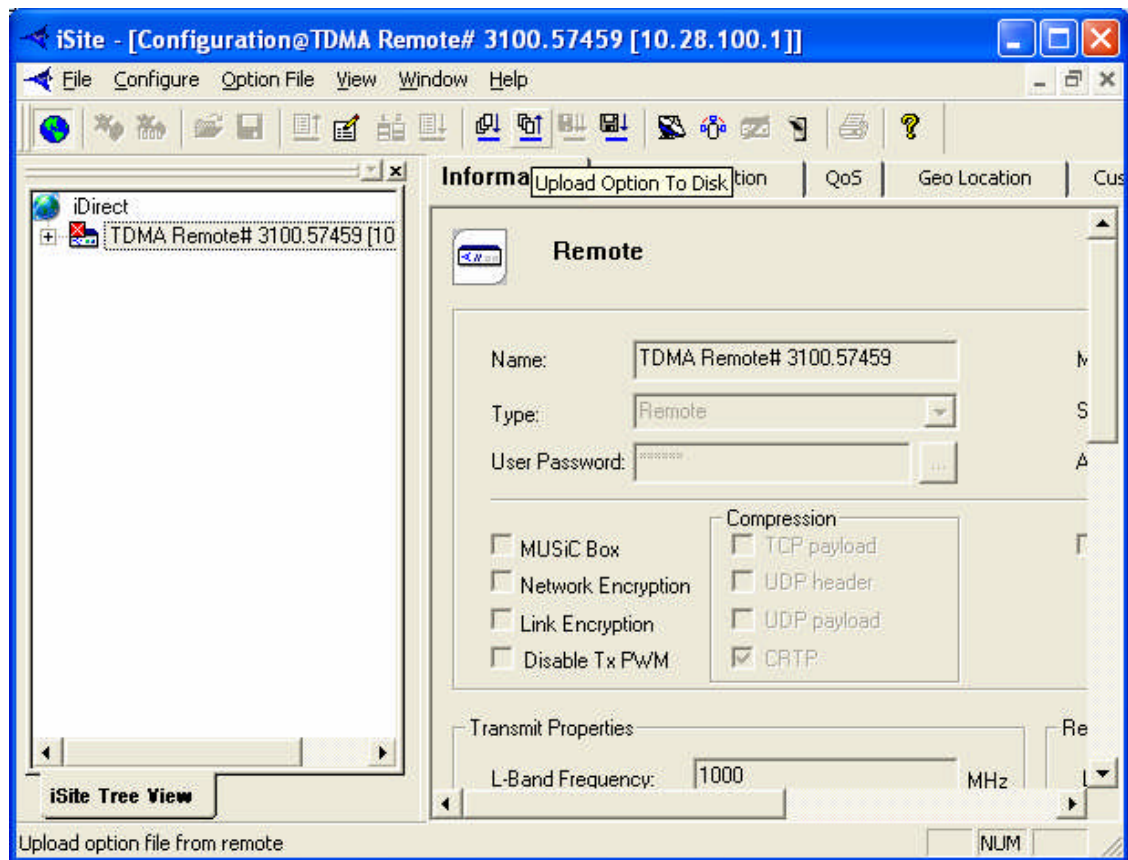
Log In Double Click Remote Icon or Right Click. Remember to Login as Admin and Password P@55w0rd!

You should now be logged on to your Modem.

Down Loading Option File From Modem – PC
Down Loading Option File From PC – Modem
Up Loading New Package/Image From PC - Modem.
(Up Grading Internal Modem Software Ver 7_0_7_0)

Down Load Option File – PC

Click Upload Option To Disk Icon



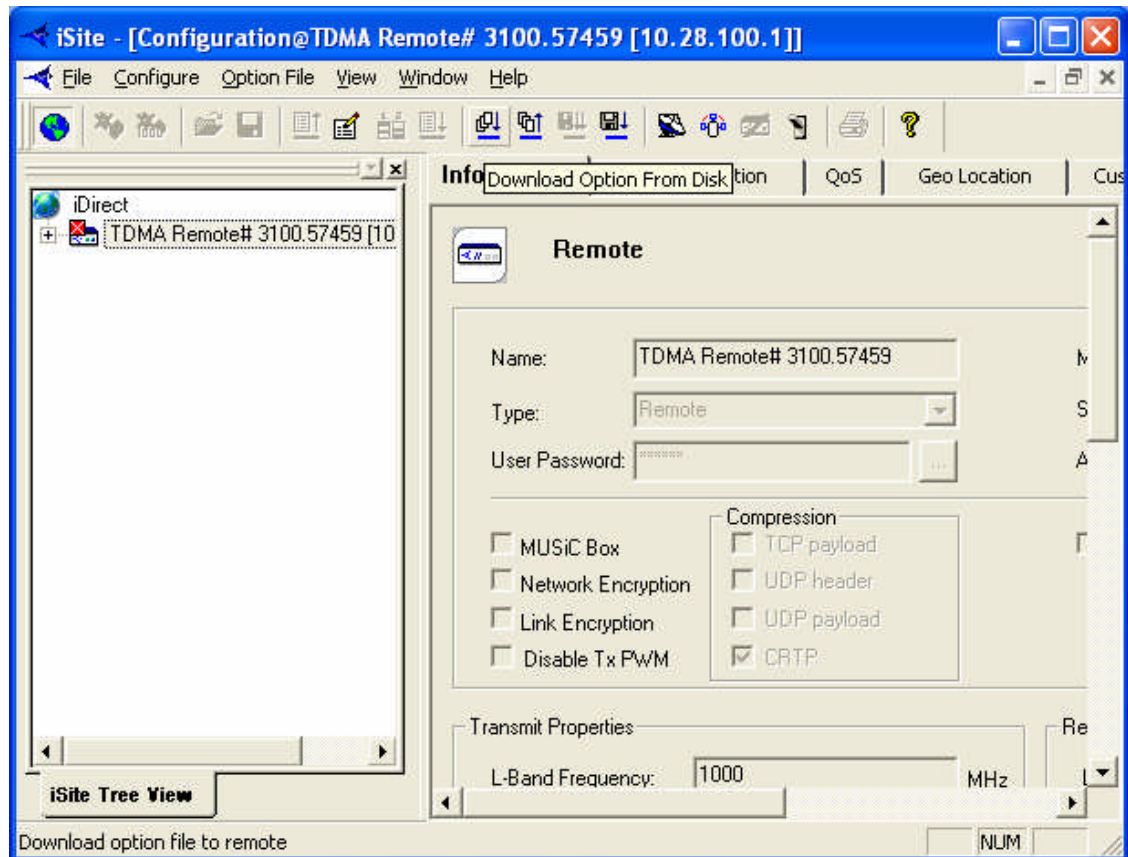
Select Location where you want to store the Option File then click Save.

Once you have saved a copy of the option file in Note Pad form will be displayed.
This is for your information only. Close the Note Pad File.

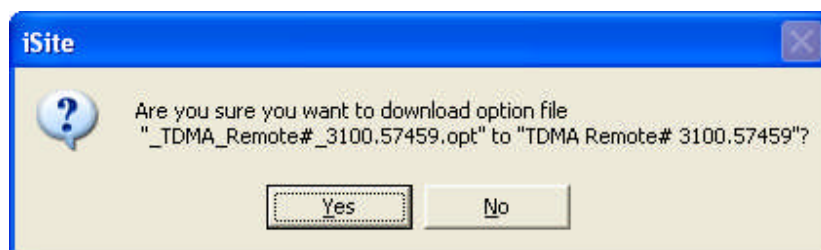
You have now saved a copy of the Modem Option File to your PC.

Down Load Option File From PC – Modem.

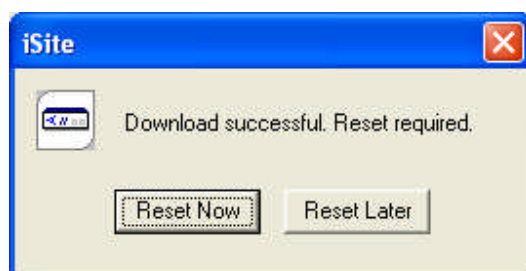
Click the Down Load Option File From Disk Icon



It will then ask you to locate your stored Option File that you have saved on your PC. Locate this Option File and Click Open.



You need to confirm this by pressing YES.



Click the Reset Now for the Option to complete its down load.

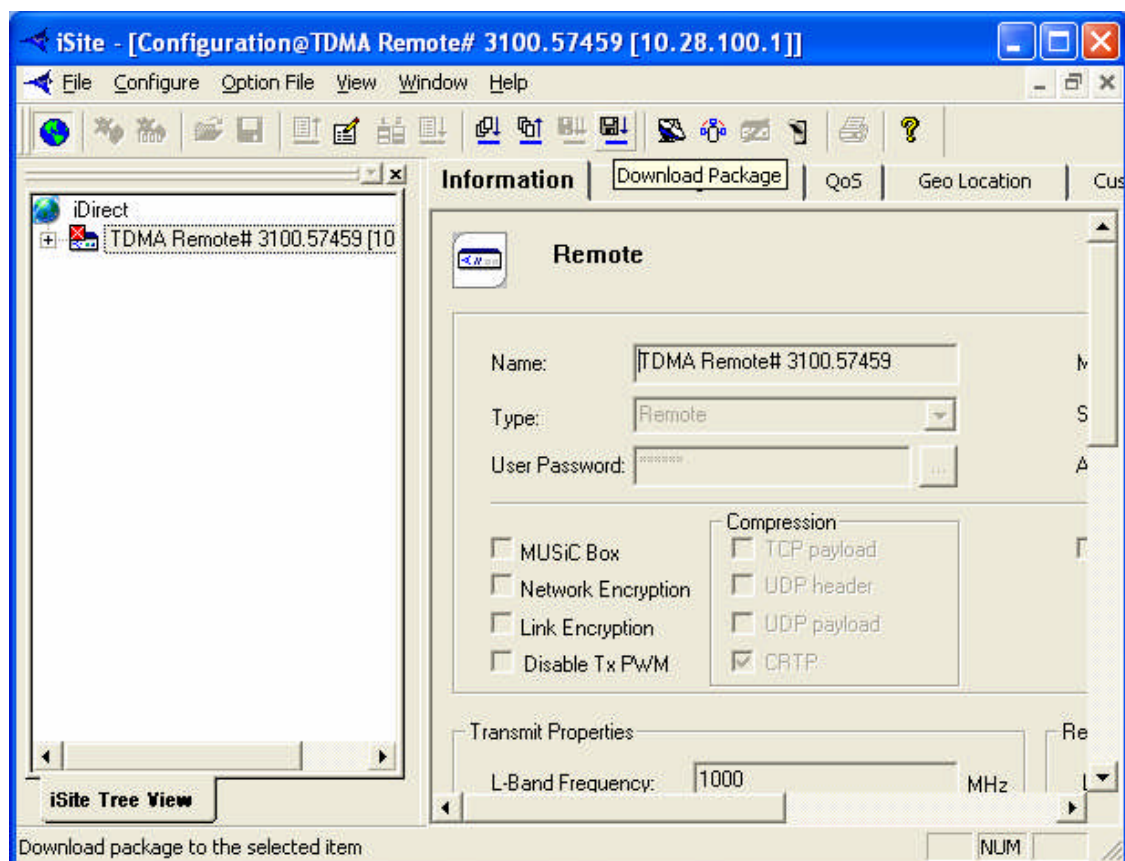
This will power cycle the modem. Once the modem has re-powered re-connect via I-Site.

Up Loading New Package/Image From PC - Modem.
(Up Grading Internal Modem Software Ver 7 0 7 0)

**WHEN UPGRADING ANY MODEM SOFTWARE (IMAGE/PACKAGE)
ALLWAYS!! SAVE THE OPERATION OPTION FILE. THIS WILL HAVE TO BE
RELOADED DURING THE FOLLOWING STEPS. IF YOU FAIL TO SAVE THE
OPTION FILE IT WILL RENDER THE MODEM UNOPERABLE AND REQUIRE
THE OPTION FILE TO BE SENT FROM THE STRATOS NOC.**

Step 1 – Save current Option File to your PC (Use Steps Above)

Step 2 – Once Option File has been saved. Click on the Down Load Package
Icon



Step 3 - Click Open

Download Package

Package:

Open

Contents:

File Name	Checksum	Decoded Len	Encoded Len	Load Addr	Jump Addr

Image Version Check:

☒ Don't check versions

☐ Download images only if versions differ

☐ Check versions only

Configurations:

☐ Download images and configurations

☒ Download images only

☐ Download configurations only

Reset:

☒ Don't reset

☐ Reset on success

☐ Reset only

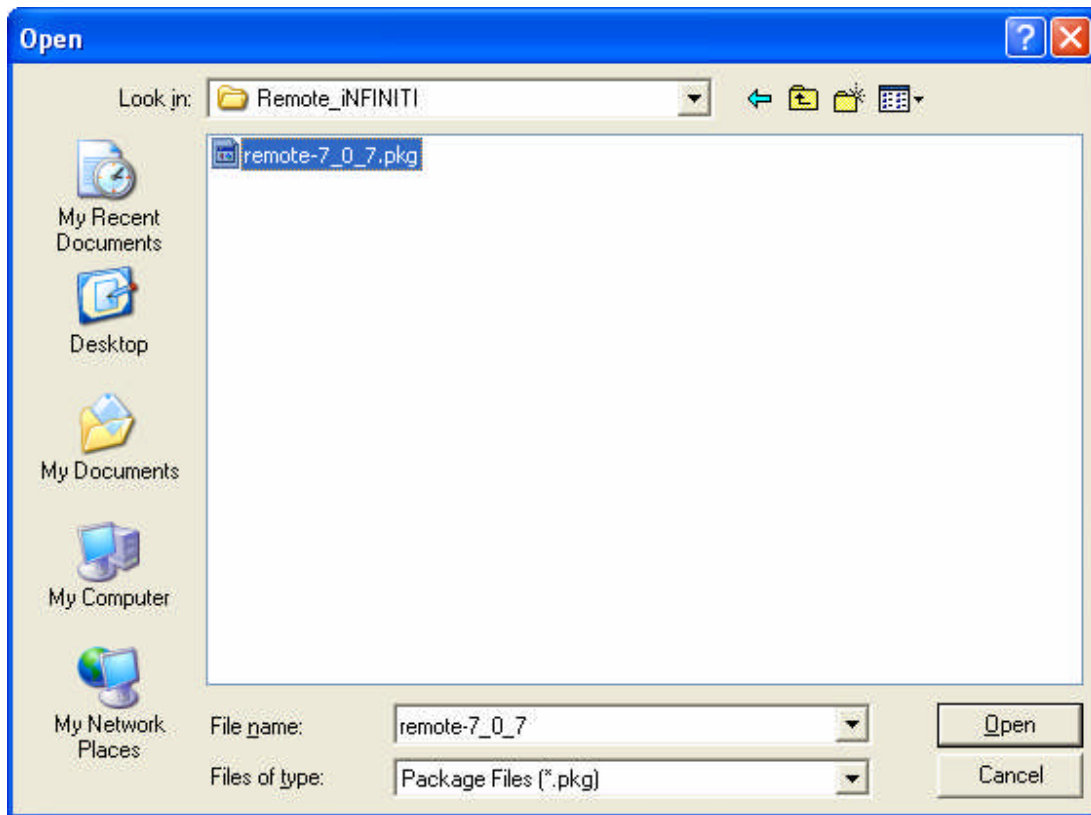
Information:

Start

Stop

Close

Locate 7_0_7_0 Package Store On Your PC.



Click Open

Click Start

Download Package

Package: remote-7_0_7.pkg

Open

Contents:

File Name	Checksum	Decoded Len	Encoded Len	Load Addr	Jump Addr
package_summary.x...	3925	328	328	0x0	0x0
package_install.sh	10932	9476	9476	0x0	0x0
falcon.tar.bz2	51156	3781338	3781338	0x0	0x0
readme.txt	13029	642	642	0x0	0x0

Image Version Check:

- ☒ Don't check versions
- ☐ Download images only if versions differ
- ☐ Check versions only

Configurations:

- ☐ Download images and configurations
- ☒ Download images only
- ☐ Download configurations only

Reset:

- ☒ Don't reset
- ☐ Reset on success
- ☐ Reset only

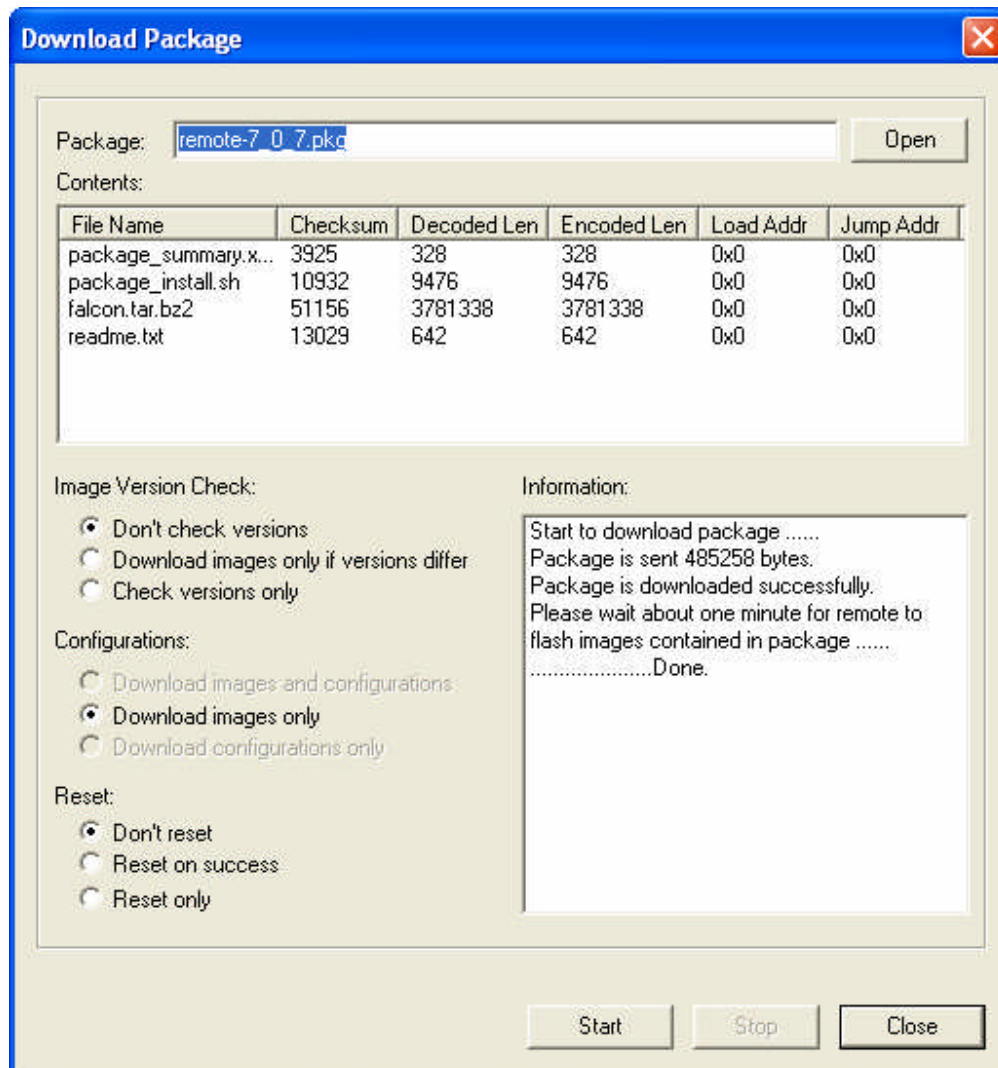
Information:

Start

Stop

Close

It will display Done when Package has been Down Loaded.



Click On Close.

Ensure Don't Reset Tab is Selected. You DO NOT Want to Re-Set The Modem At this stage.

Step 4 – Re-Load Operational Option File Previously Down Loaded using the Above Steps.

Re-Set Modem Once Option File has been Down Loaded.

Step 5 – Re-Connect Via HyperTerminal

Type Version this should confirm that you're now upgraded to the latest version of software.